



Storage Configuration for Uninterrupted Recording

Article ID: GV2-26-04-08

Release Date: April 9, 2026

Applied to

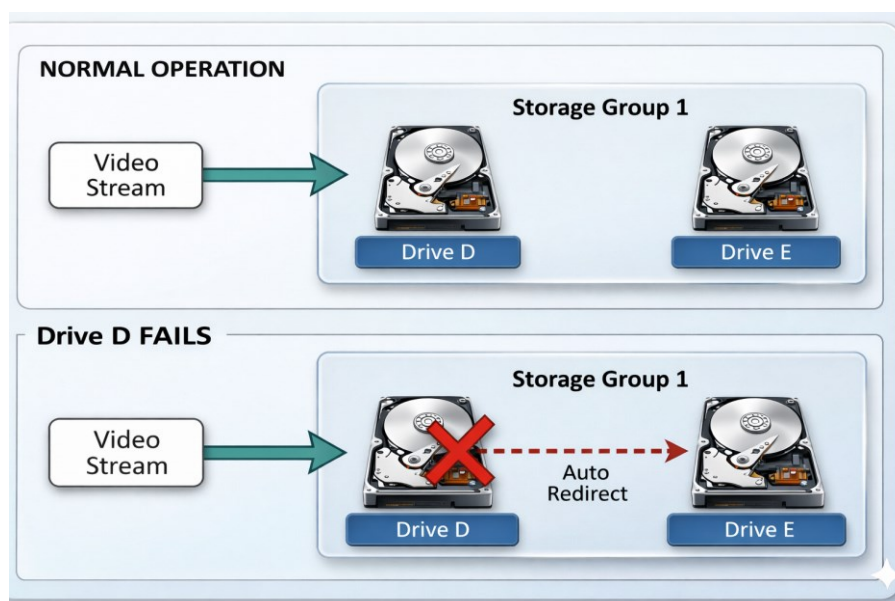
GV-AI Guard
GV-Recording Server
GV-NVR
GV-VMS

Recommended Storage Configuration

To protect your data from hardware failure and ensure continuous surveillance, we highly recommend **assigning multiple storage drives to each Storage Group**:

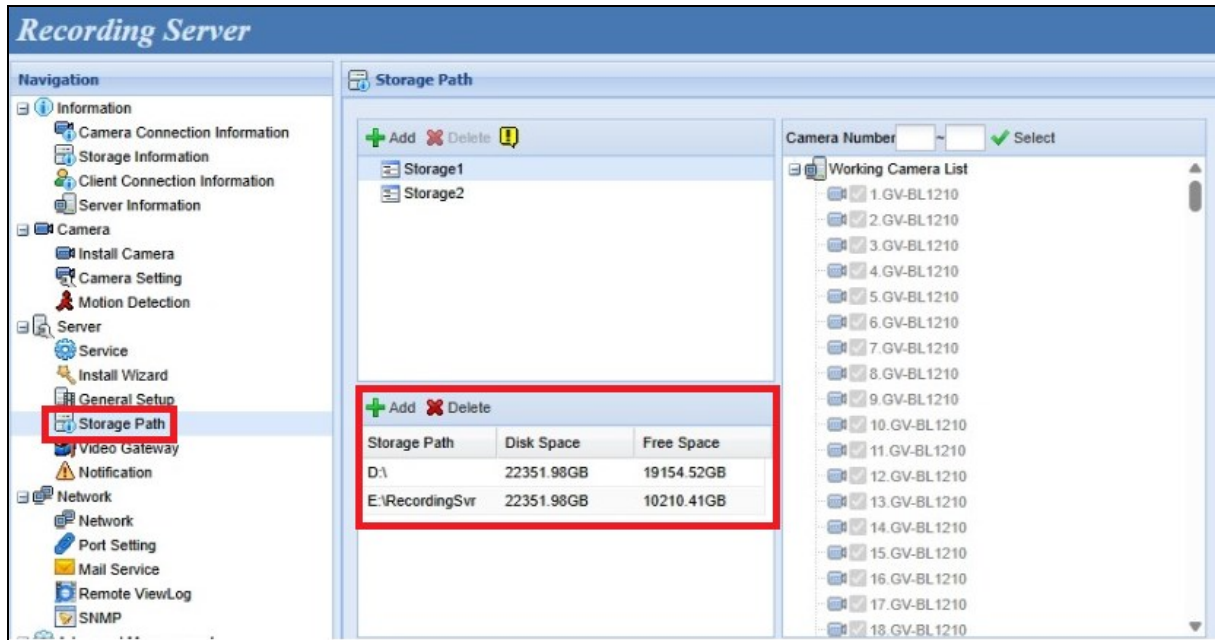
Every Storage Group should be linked to more than one storage drive. If a primary drive becomes unavailable or fails, the system will automatically switch to a secondary drive to prevent data loss and recording gaps.

Note that linking multiple drives to a Storage Group is required for **uninterrupted recording**, regardless of whether your individual drives consist of a single disk or a multi-disk RAID array. While RAID protects the data *within a drive*, **multiple drive assignments protect the recording process itself.**





- **Example in GV-Recording Server:** Assign **Storage Group 1** to two storage drives (e.g., **Drive D** and **Drive E**). If Drive D encounters an error, the system will continue recording to Drive E.



- **Example in GV-VMS:** Assign **Storage Group 1** to two storage drives (e.g., **Drive D** and **Drive E**). If Drive D is disconnected or fails, the system will automatically redirect the video stream to **Drive E**.

To access Add Recording Location, click **Home** > **Toolbar** > **Configure** > **System Configure** > **Record Setting**.

