



# Windows 11 Chrome and Edge Browser Updates Causing Live View Issues for GV-IP Devices

**Article ID: GV3-25-10-09-T**

**Release Date: Oct. 9, 2025**

## Contents

Applied to.....	1
Symptom.....	2
Solution.....	2
To turn off Startup boost in Edge.....	2
To reset the Chrome / Edge shortcut .....	3
To open Chrome / Edge Properties .....	4
To edit Chrome / Edge Properties .....	6
To verify live view restoration .....	6

## Applied to

<b>GV-SNVRs:</b>	GV-SNVR3203	GV-SNVR6403	GV-TNVR1620-P
<b>GV-HD DVRs:</b>	GV-TXVL1610		

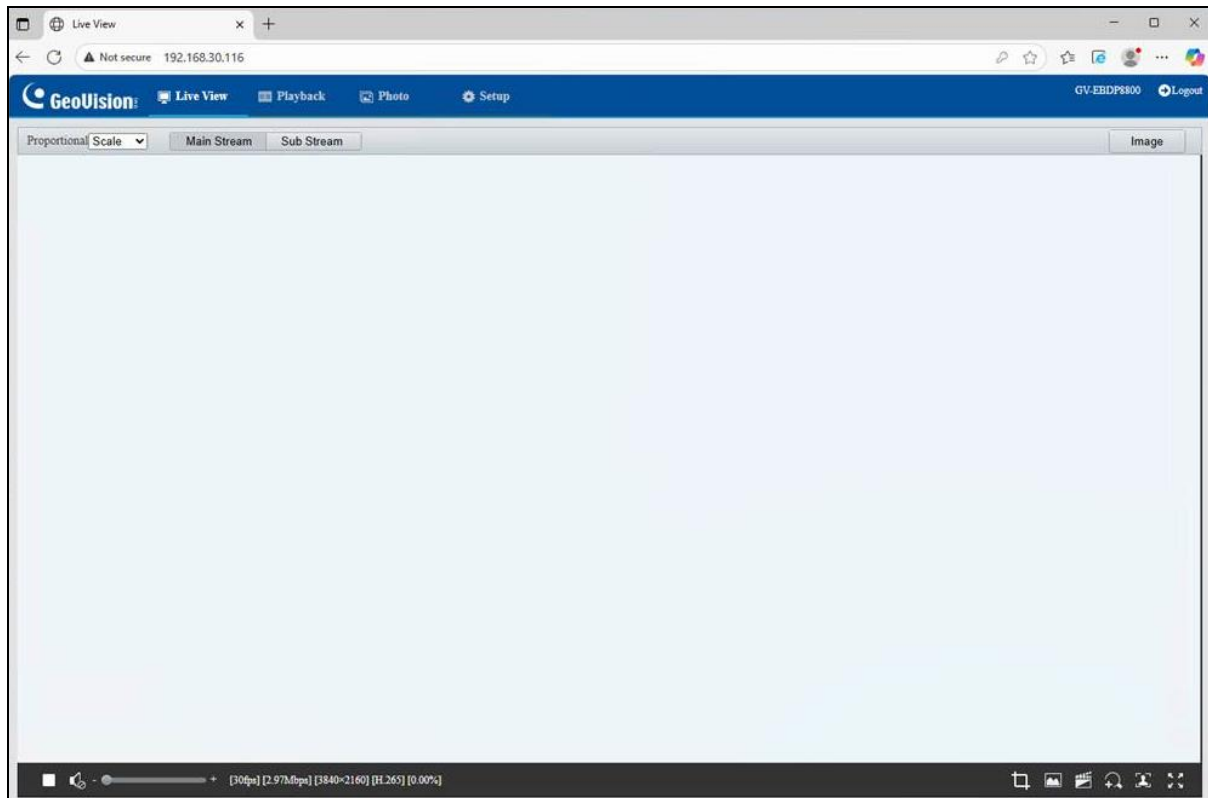
<b>GV-IP Cameras:</b>			
GV-CBL2800	GV-EBD2704	GV-TDR2704	GV-BLFC5800
GV-CEB2800	GV-EBD2705	GV-TDR2705	GV-EBDP5800
GV-GBL4900	GV-EBD4704	GV-TDR4704	GV-EBDP8800
GV-GBL4911	GV-EBD4813	GV-TDR4803	GV-EBFC5800
GV-GBL12811	GV-EBD8800	GV-TDR8805	GV-FER5702
GV-GBLF2802	GV-EBD8813	GV-TFD4800	GV-PTZ5810-IR
GV-GBLF4802	GV-TBL2705	GV-TVD2712	GV-SD4825-IR
GV-GBLN4800	GV-TBL2706	GV-TVD4810	GV-SD4834-IR
GV-GDR2801	GV-TBL2718	GV-TVD4811	GV-TBLP5800
GV-GDR4900	GV-TBL4705	GV-TVD8810	GV-TBLP8800
GV-GDRF4800	GV-TBL4807		GV-TMS8800
GV-GEB4900	GV-TBL4810		GV-TMS20811
GV-GEBF4802	GV-TBL8804		
GV-GEBN4800	GV-TBL8810		
GV-GFER6900			
GV-GFER12800			
GV-GVD4910			



## Symptom

Users accessing the web interfaces of GV-IP Devices through Google Chrome or Microsoft Edge browsers on Windows 11 may experience an issue where the Live View fails to display after installing the Live View Plug-in component.

This issue occurs in Chrome and Edge version 139.0 or later, resulting from underlying changes in the Windows 11 browser framework.



## Solution

To resolve the issue for Google Chrome or Microsoft Edge browsers, follow the steps below.

### To turn off Startup boost in Edge

Disabling Startup boost ensures that Edge fully closes, so any property changes take effect the next time the browser is launched.

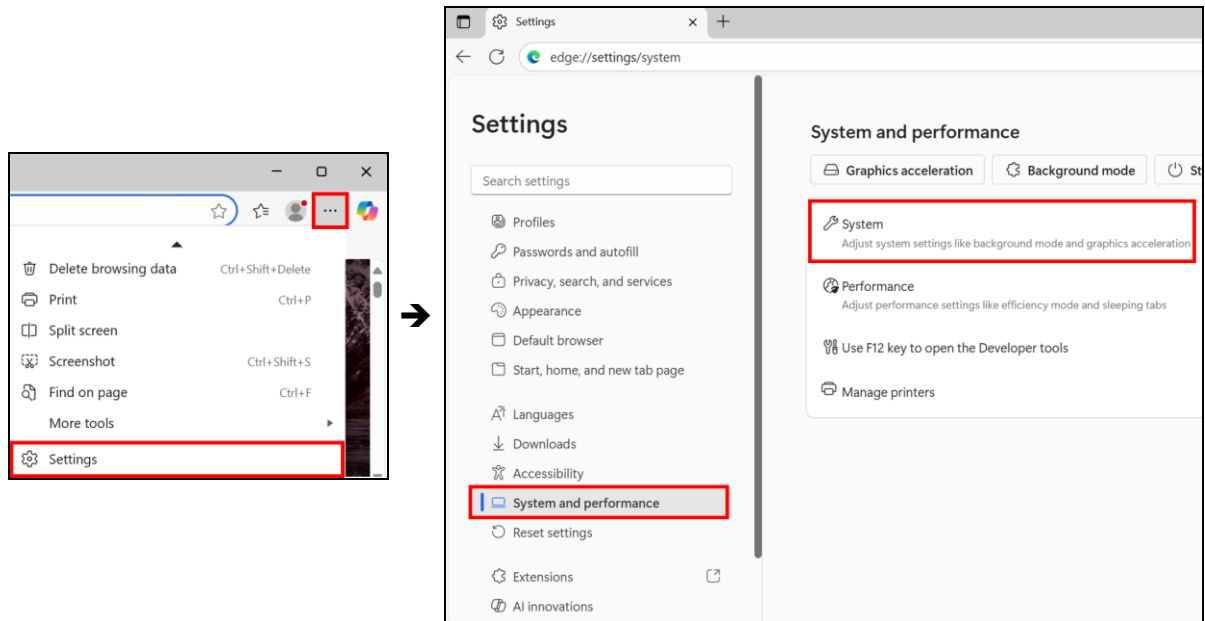
---

**Note:** Steps 1 to 3 are only for Microsoft Edge browsers.

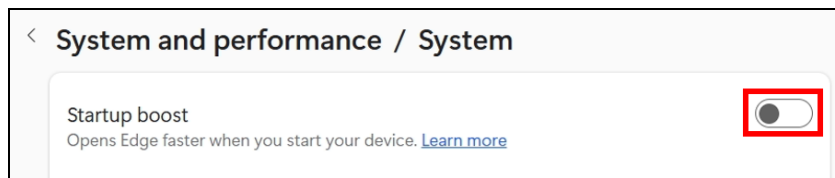
---



1. Open **Edge**.
2. Click the “...” button at the top right > **Settings**. The Settings page appears.



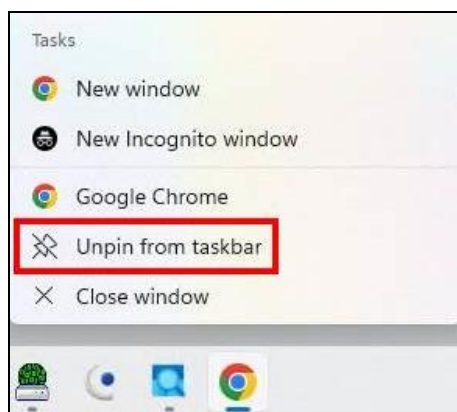
3. Go to **System and performance** > **System**, and turn off the **Startup boost** option.



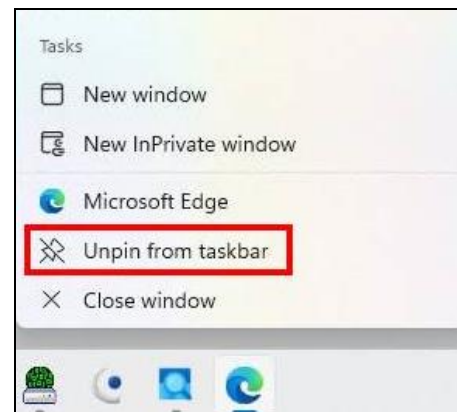
### To reset the Chrome / Edge shortcut

4. Close all Chrome / Edge browsers, and unpin Chrome / Edge from the taskbar if it is currently pinned.

#### Google Chrome



#### Microsoft Edge

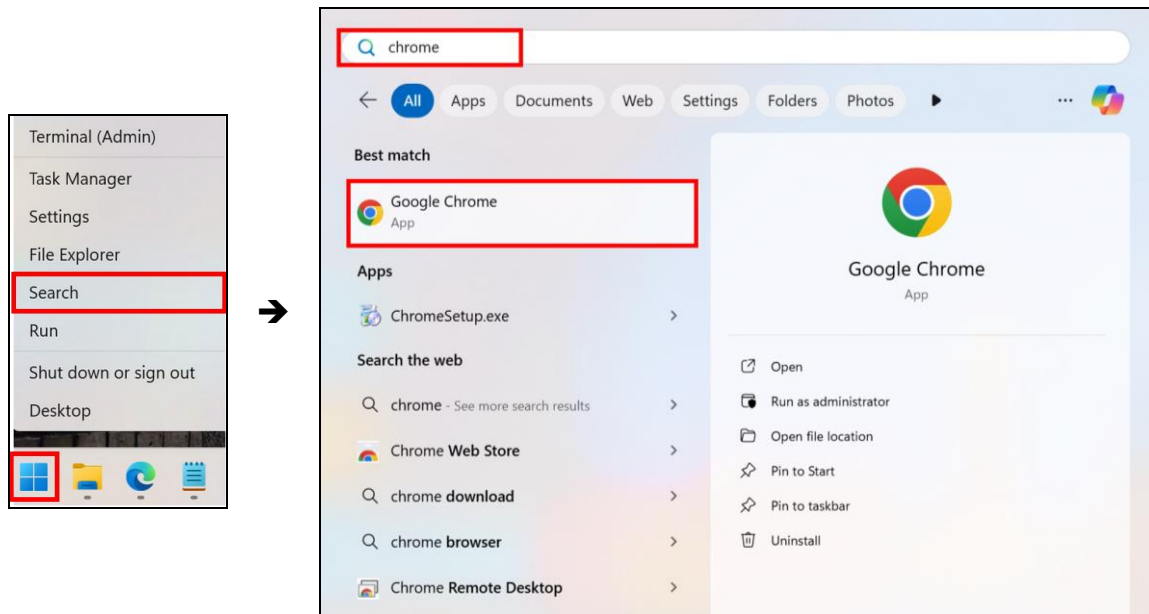




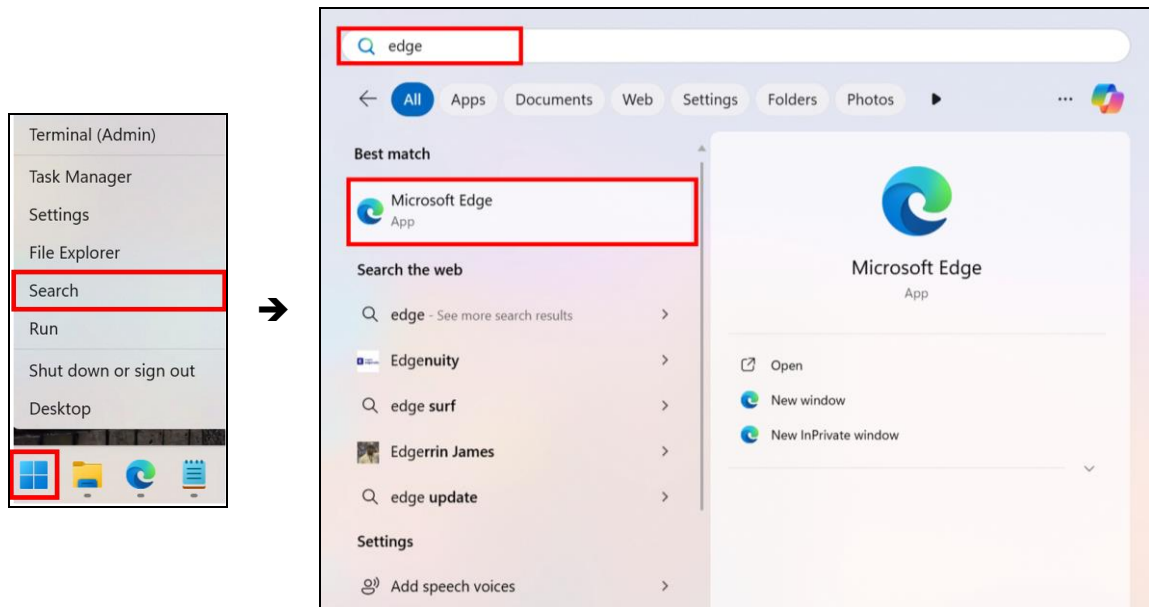
## To open Chrome / Edge Properties

5. Right-click the **Windows Start** menu > **Search**, type **Chrome / Edge** in the search bar, and click **Google Chrome / Microsoft Edge**.

### Google Chrome



### Microsoft Edge

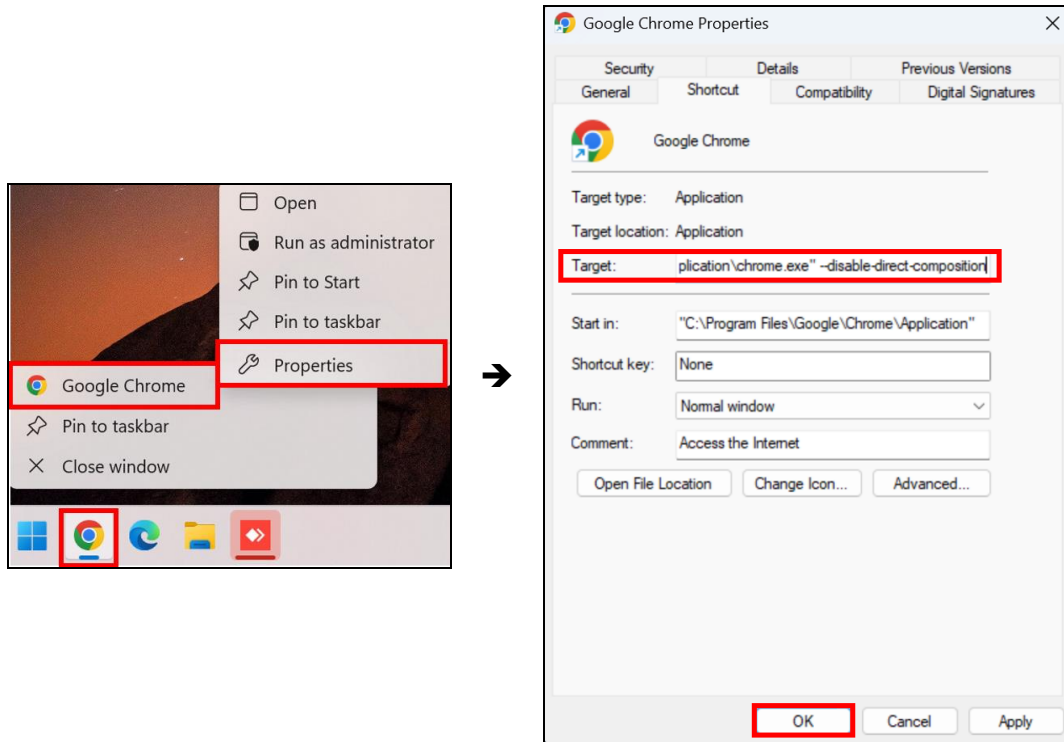


**Note:** Do not open Chrome / Edge using other shortcuts, such as those on the desktop or elsewhere in File Explorer. For this step, open it from the Start menu to ensure it is launched correctly and not from a shortcut that may retain problematic properties.

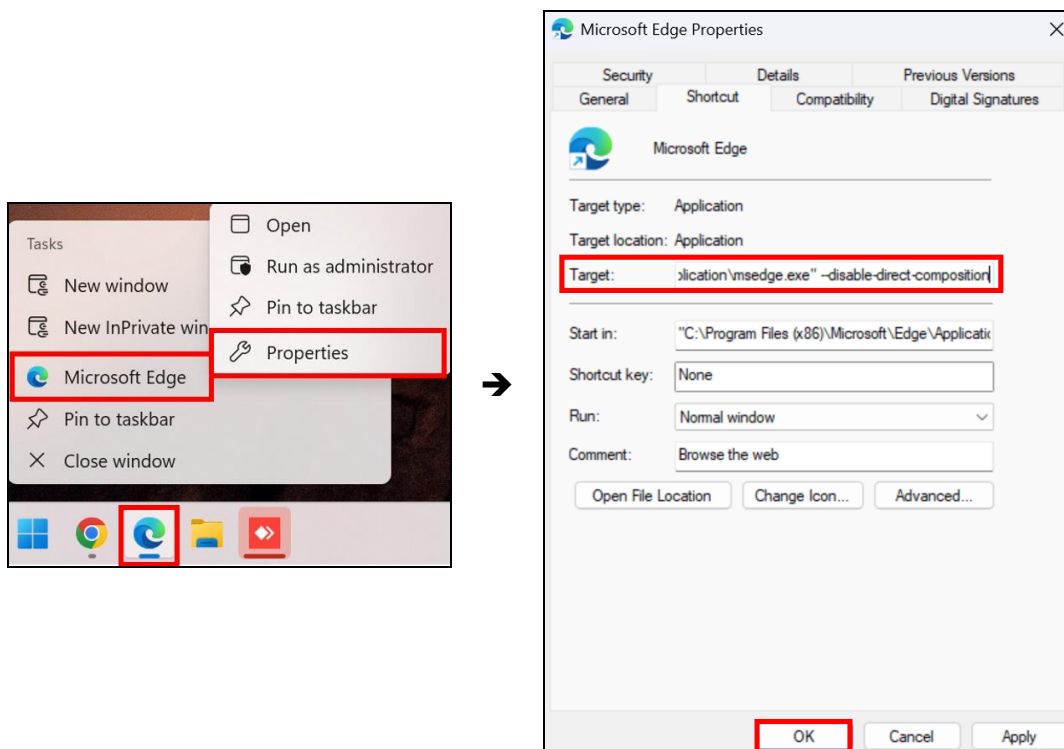


- Right-click the **Chrome / Edge** icon in the taskbar, right-click **Google Chrome / Microsoft Edge** in the dropdown list, and then select **Properties**. The Google Chrome / Microsoft Edge Properties dialog box appears.

### Google Chrome



### Microsoft Edge





### To edit Chrome / Edge Properties

7. In the **Target** field, add **--disable-direct-composition** at the end of the existing path (note that there must be a space before --). Click **OK** to exit.
8. Restart the computer.

### To verify live view restoration

9. After the restart, open **Chrome / Edge** again. You can open it from the Start menu (see Step 5) or by clicking the **Chrome / Edge** shortcut on your desktop (if available). You may also pin it to the taskbar if needed.
10. Log in to the Web interface of your GV-IP Device. The live view will now be visible.