

# Quick Start Guide



*The Vision of Security*

## GV-Tower System V2 (Rev. G)



Thank you for purchasing GV-Tower System V2 (Rev. G). This guide is designed to assist the new user in getting immediate results from the GV-Tower System V2 (Rev. G). For advanced information on how to use the GV-Tower System V2 (Rev. G), please refer to *GV-Tower System V2 (Rev. G) User's Manual*.



© 2025 GeoVision, Inc. All rights reserved.

Under the copyright laws, this manual may not be copied, in whole or in part, without the written consent of GeoVision.

Every effort has been made to ensure that the information in this manual is accurate. GeoVision, Inc. makes no expressed or implied warranty of any kind and assumes no responsibility for errors or omissions. No liability is assumed for incidental or consequential damages arising from the use of the information or products contained herein. Features and specifications are subject to change without notice.

GeoVision, Inc.  
9F, No. 246, Sec. 1, Neihu Rd.,  
Neihu District, Taipei, Taiwan  
Tel: +886-2-8797-8377  
Fax: +886-2-8797-8335  
<http://www.geovision.com.tw>

Trademarks used in this manual: *GeoVision*, the *GeoVision* logo and GV series products are trademarks of GeoVision, Inc. *Windows* is the registered trademark of Microsoft Corporation.

August 2025

**Scan the following QR codes for product warranty and technical support policy:**



[Warranty]



[Technical Support Policy]

# Contents

<b>Chapter 1 Introduction .....</b>	<b>2</b>
1.1 Packing List.....	2
1.2 Recommended Hard Drive .....	2
1.3 Front View & Rear View .....	3
1.4 Basic Installation .....	5
<b>Chapter 2 Install the Hard Drive .....</b>	<b>6</b>
<b>Chapter 3 Turn On the Power .....</b>	<b>8</b>
3.1 Windows Setup Installation .....	8
<b>Chapter 4 GV-Tower NVR System V2 (Rev. G) .....</b>	<b>10</b>
4.1 Main Screen.....	10
4.1.1 Adding Hot Swap Drive to Recording Path.....	11
4.1.2 Adding IP Video Devices .....	13
4.1.3 Renaming the Camera.....	15
4.1.4 Choosing Recording Mode .....	16
4.1.5 Changing Recording Resolution .....	17
4.2 Setting Up a Recording Schedule.....	18
4.3 Playing Back Video .....	19
4.4 Backing Up Video Files .....	21
<b>Chapter 5 GV-Tower VMS System V2 (Rev. G) .....</b>	<b>23</b>
5.1 Main Screen.....	23
5.1.1 Adding Hot Swap Drive to Recording Path.....	24
5.1.2 Adding IP Cameras to GV-VMS.....	25
5.2 Configuring Camera Settings .....	27
5.3 Playing Back Recorded Videos .....	28
5.4 Backing Up Recorded Videos.....	30
<b>Chapter 6 Restore the System.....</b>	<b>31</b>

# Chapter 1 Introduction

Welcome to *GV-Tower System V2 (Rev. G) Quick Start Guide*. In the following sections, you will learn about the basic installations and configurations of the system. For details, see *User's Manual (C:\UserManual)*.

## 1.1 Packing List

- GV-Tower NVR / VMS System V2 (Rev. G) x 1
- Key for Hard Disk Safety Lock x 2
- Hard Disk Drive Screw x 16



- AC Power Cord x 1



- Documents Download Guide x 1

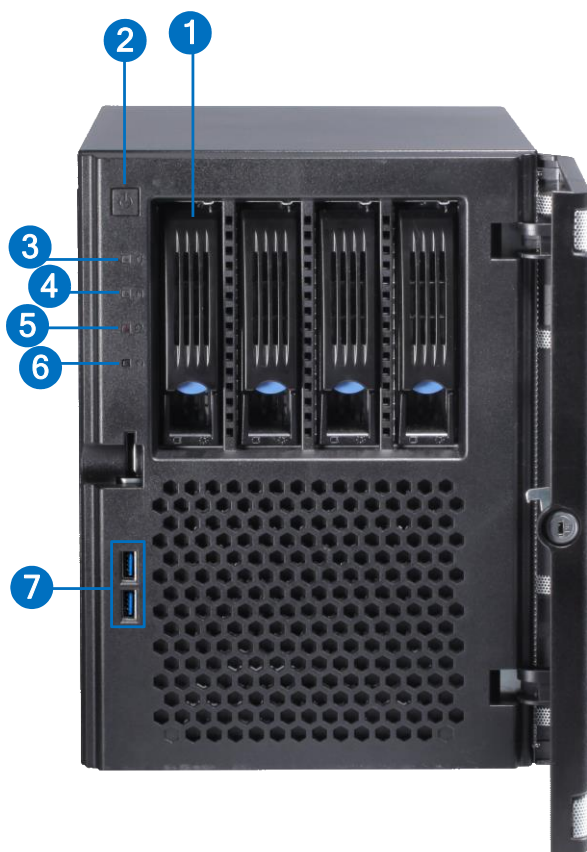
## 1.2 Recommended Hard Drive

For system efficiency, we recommend enterprise level hard disk drives. Avoid using desktop level or green HDD which may affect system efficiency. See [here](#) for details.



## 1.3 Front View & Rear View

### Front View



No.	Name	No.	Name
1.	3.5" HDD Tray x 4	5.	Not Functional
2.	Power Button	6.	Reset Button
3.	Power LED (Blue)	7.	USB (3.2 Gen 1) Port x 2
4.	HDD Activity LED (Red)		

## Rear View

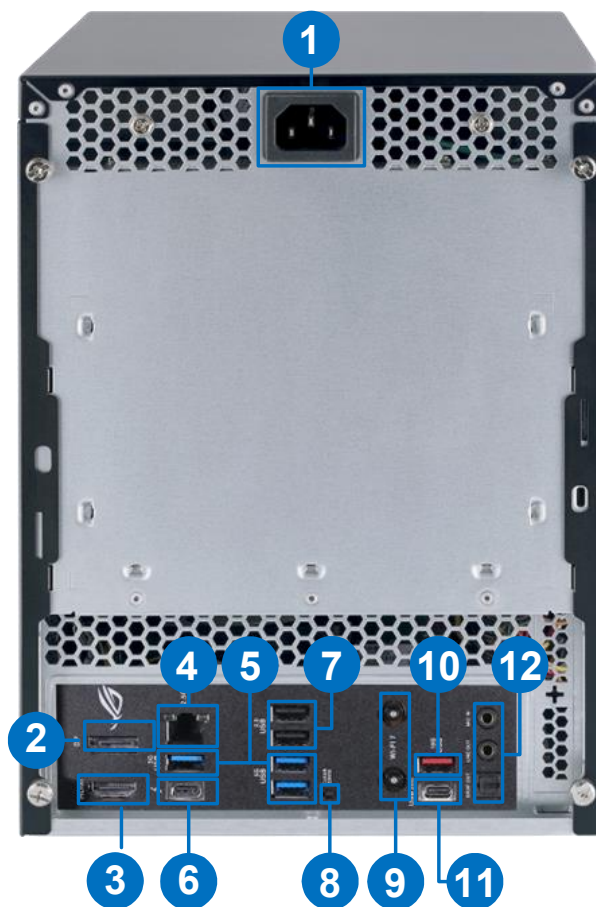


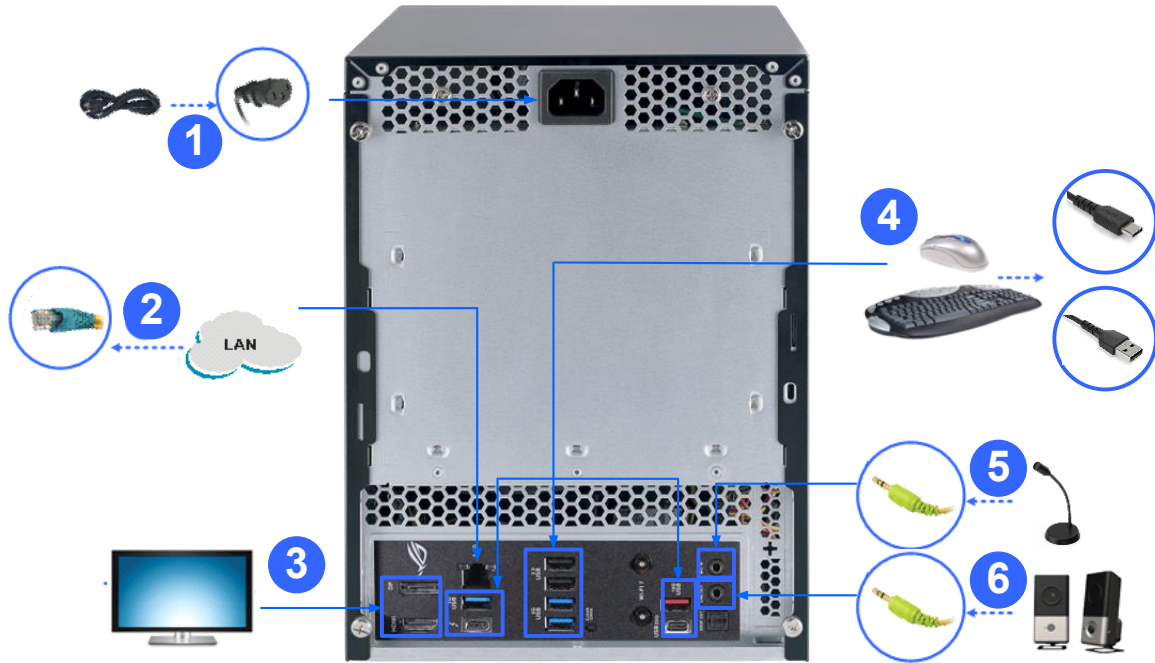
Figure 2-2

No.	Name	No.	Name
1.	Power Connector x 1	7.	USB 2.0 Type-A Port x 2
2.	DisplayPort x 1	8.	Clear CMOS Button x 1 (*)
3.	HDMI Port x 1	9.	Not functional
4.	2.5 GbE Ethernet Port x 1	10.	USB 3.2 Gen 2 Port (Type-A, 10 Gbps) x 1
5.	USB 3.2 Gen 1 Port (Type-A, 5 Gbps) x 3	11.	USB 3.2 Gen 2x2 Port (Type-C, 20 Gbps) x 1
6.	Thunderbolt 4 Port (Type-C) x 1	12.	Audio Jack x 3 <ul style="list-style-type: none"> <li>➤ Mic In</li> <li>➤ Line Out</li> <li>➤ S/PDIF Out (TOSLINK Connector)</li> </ul>

**IMPORTANT (\*)**: Please contact the GeoVision Support Team ([support@geovision.com.tw](mailto:support@geovision.com.tw)) before using the Clear CMOS Button.

## 1.4 Basic Installation

Here we use GV-Tower NVR System V2 (Rev. G) as the example.



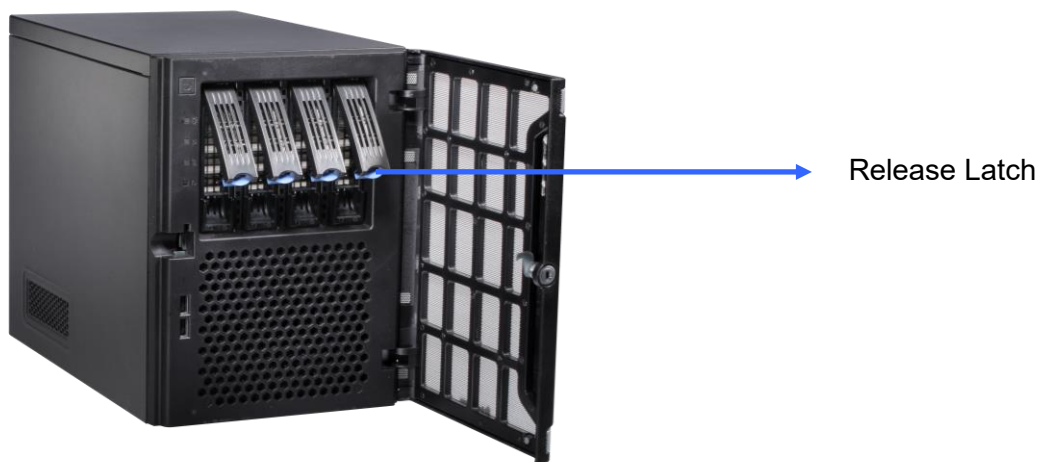
1. Using the supplied power cord, connect one end to the AC input and the other end to the power outlet.
2. Using the RJ-45 cable, connect one end to the Ethernet port and the other end to Network.
3. Connect an HDTV to GV-Tower NVR/VMS System V2 (Rev. G) using the HDMI / DisplayPort supplied by the HDTV manufacturer.
4. Connect the mouse and keyboard to a USB port (USB 2.0 or USB 3.2) or to the Thunderbolt 4 port with USB device support.
5. Connect microphones to the Audio Mic In port.
6. Connect speakers to the Audio Line Out port.

Once the above hardware is properly connected, press the Power button on the front panel to start the system. It takes about 1 minute for startup. The system should load automatically and display cameras in the main screen.

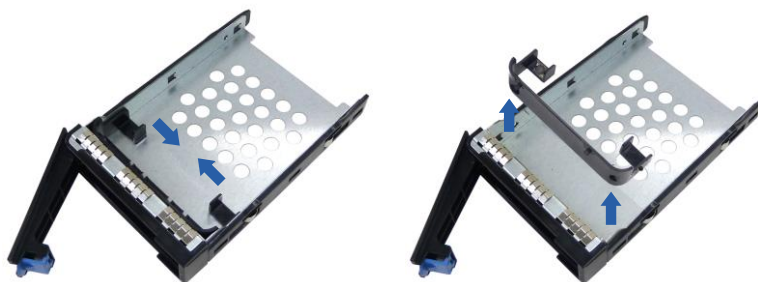
## Chapter 2 Install the Hard Drive

GV-Tower NVR/VMS System V2 (Rev. G) uses SATA hard drives for video and audio data storage. Before recording, ensure to install your hard drives. Follow the below steps to install the hard drive.

1. Press the release latch. The drawer handle pops up.



2. Pull out the drive drawer.
3. Remove the plastic carrier from the chassis.



4. Insert the hard drive in the drawer.



5. Secure the hard drive with the 4 screws, and make sure all screw heads flush with the surface.



6. Put the drawer back in the drive bay of GV-Tower NVR/VMS System V2 (Rev. G), and push the latch until it locks.
7. When the Power LED on the drawer shines blue, the hard drive is now ready to use.



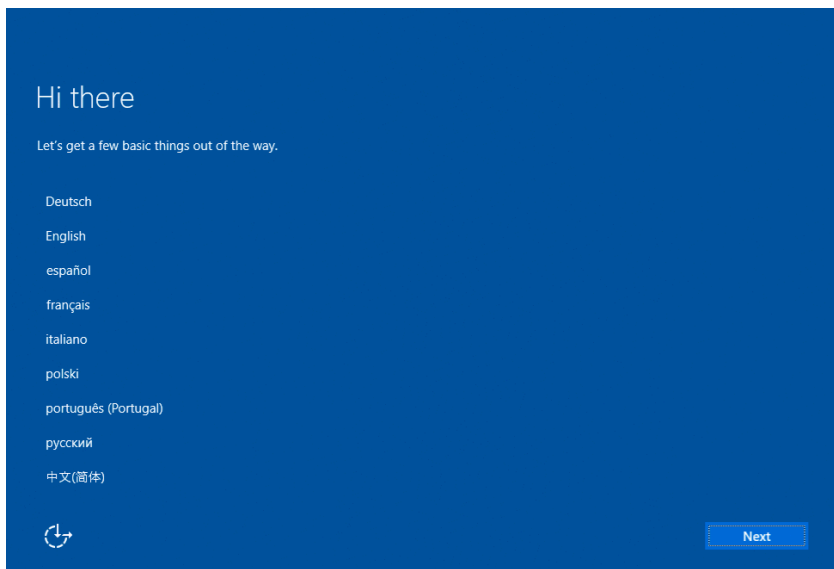
- To format the hard drive, see *3.4 Formatting the Hard Drive in GV-Tower System V2 (Rev. G) User's Manual (C:\UserManual)*.
- To add the hard drive to the recording path, see *3.5 Adding the Hard Drive to the Recording Path in GV-Tower System V2 (Rev. G) User's Manual (C:\UserManual)*.

## Chapter 3 Turn On the Power

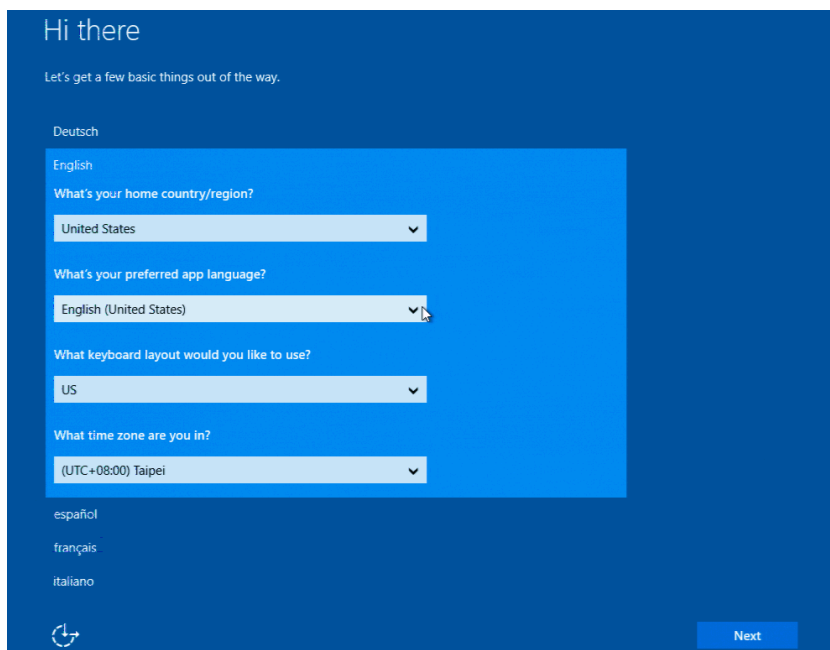
### 3.1 Windows Setup Installation

The Windows setup is preparing your computer for first use.

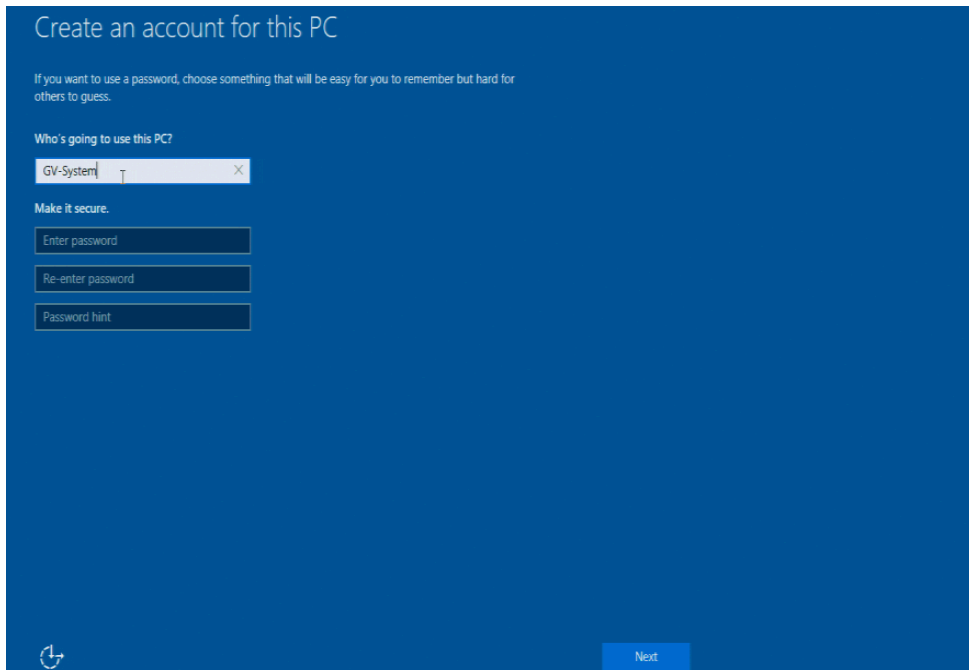
1. After the Windows starts, this setup screen appears. Select your language and click **Next** to continue.



2. Select your regional settings and time zone and click **Next** to continue.



3. Click **Accept** to accept Microsoft software license terms.
4. Select between “Customize” or “Use Express settings” for your Windows installation.
5. Type your account name. It is recommended that you create a password for your account and click **Next**.



When the above setup process is complete, Windows will finalize your settings automatically in the background and restart.

---

**IMPORTANT:** In case of any problems causing you unable to access Windows operating system, it is highly recommended to back up the OS before you start any settings and operations. For details, see [6 Restore the System](#).

---



# Chapter 4 GV-Tower NVR System V2 (Rev. G)

## 4.1 Main Screen



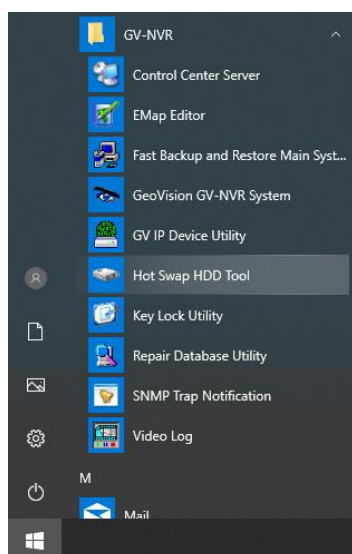
No.	Name	No.	Name
1	Logout / Exit / Minimize	8	Start/stop screen rotation
2	Select screen divisions	9	Access remote applications
3	Select a camera for full screen mode	10	Camera Name
4	Start/stop recording	11	Date / Time / Storage Space
5	Set up recording schedules	12	Status indicators for remote applications
6	Access system settings	13	Click to call up PTZ Control Panel
7	Access ViewLog to play back video	14	Click to call up I/O Control Panel

## 4.1.1 Adding Hot Swap Drive to Recording Path

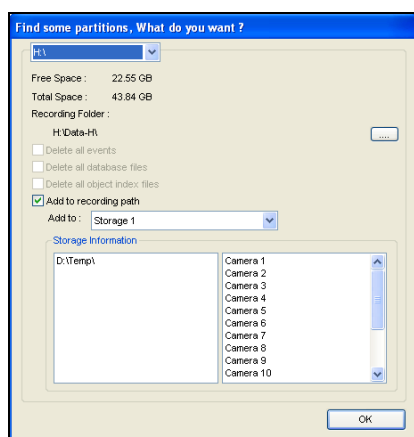
Before recording, you need to add the formatted hard drive to the recording path.

**Note:** The default recording path for the hot-swap drives starts from D:\

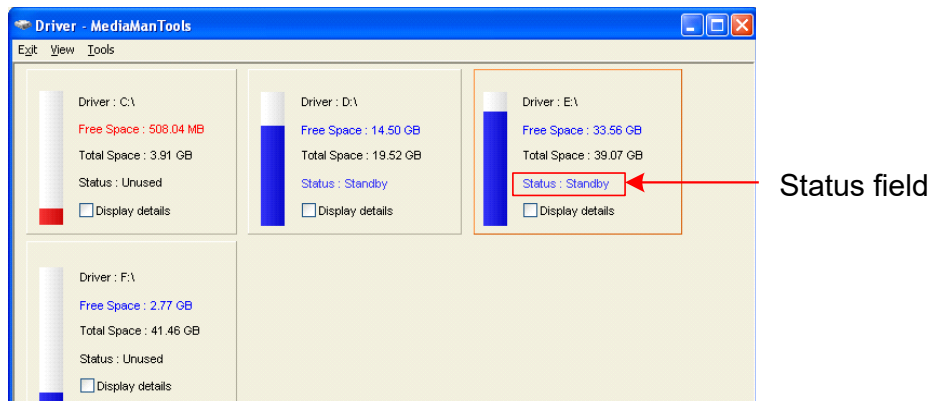
1. Click the Windows **Start** button, click **GV-NVR**, and select **Hot Swap HDD Tool**. The MediaMan Tools window appears.



2. If a hard drive is already inserted, right-click it in the MediaMan Tools window, select **Add for recording**, and then select the storage group from the drop-down list.
3. If a hard drive is not inserted, follow these steps:
  - A. Insert a hot-swap hard drive or plug a portable hard drive to GV-Tower NVR System V2 (Rev. G). This dialog box appears.



- B. Select **Add to recording path**, and select the storage group from the drop-down list.
4. Click **OK** to automatically configure the hard drive to the recording path.
5. In the MediaMan Tools window, if the hard drive is successfully added to store data, its Status field should display “Standby”.

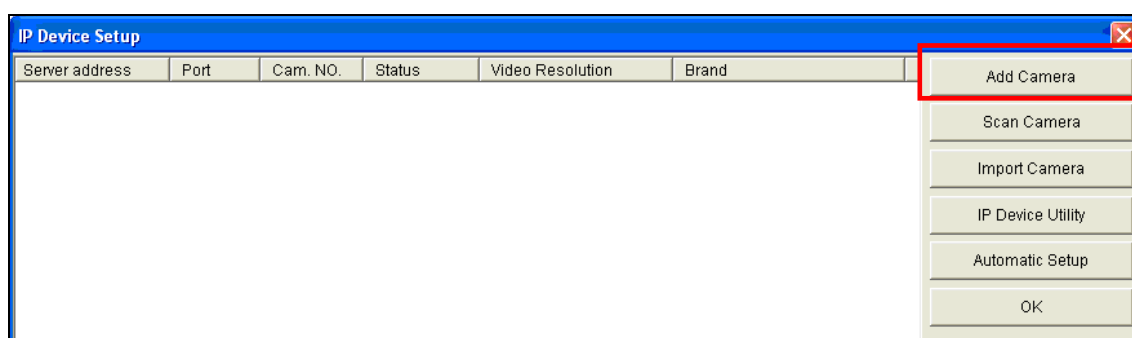


6. To add another formatted hard drive for storage, repeat the above steps.

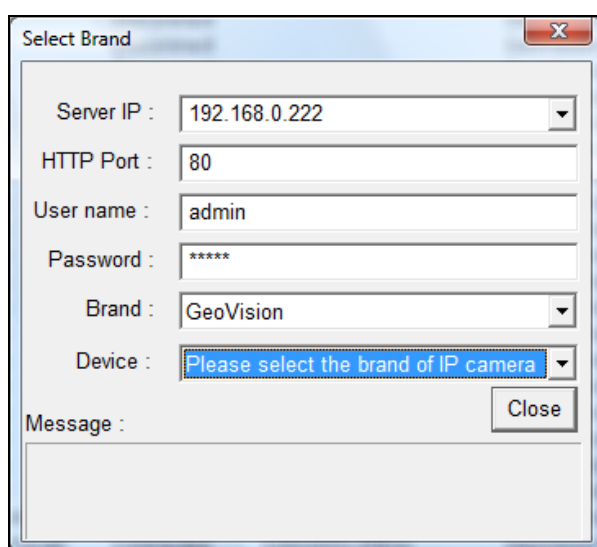
## 4.1.2 Adding IP Video Devices

The procedures for adding an IP camera, Video Server and Compact DVR may vary. The following instructions are the setup procedure for adding an IP camera in the system.

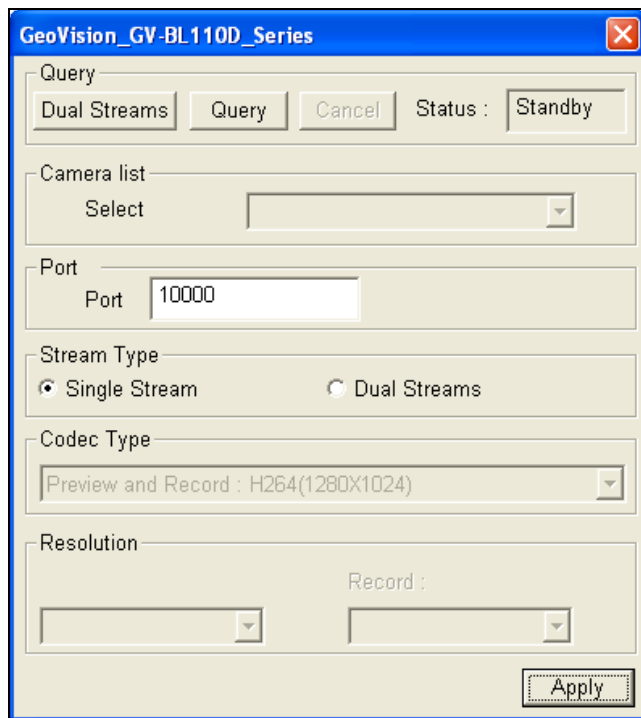
1. On the main screen, click the **Configure** button, select **System Configure** and click **IP Camera Install**.
2. To automatically add an IP camera on the LAN, click **Scan Camera**. To manually set up an IP camera, click **Add Camera** and follow the steps below.



3. Type the IP address, username and password of the IP camera. Keep or modify the default HTTP port 80.

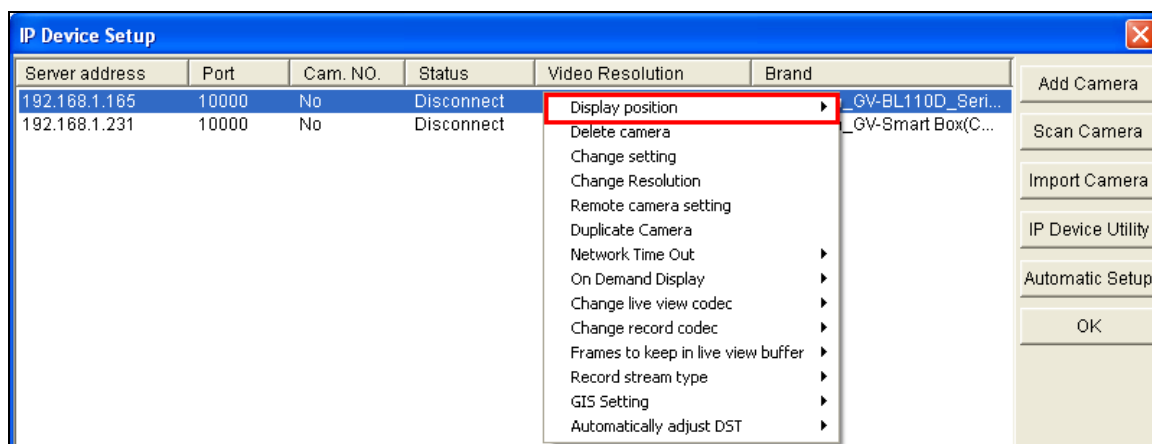


4. Select a camera brand and model from the **Brand** and **Device** drop-down lists respectively. This dialog box appears.



5. The options in the dialog box may vary depending on camera brands.
  - **Dual Streams:** Click the button to apply the default codec and resolution of GV-IP camera.
  - **Query:** Use the current codec and resolution setting on GV-IP camera.
  - **Camera list:** Select a camera number.
  - **Port:** Keep or modify the default video streaming port 10000.
  - **Stream Type:** You may have the option of single or dual streaming depending on camera models.
  - **Codec Type:** You may have different codec options depending on camera models. If the selected camera supports dual streaming, the preview codec and recording codec can be set differently.
  - **Resolution:** Select the resolutions for preview and recording.
6. Click **Apply**. The IP camera is added to the list.

7. Right-click the camera and select **Display position** to map the camera to a channel.




8. The Status column now should display **Connected**. Click **OK**.

For details, refer to *Hybrid and NVR Solution*, Chapter 2, *GV-DVR User's Manual* on Software DVD (**C:\UserManual**).


### 4.1.3 Renaming the Camera



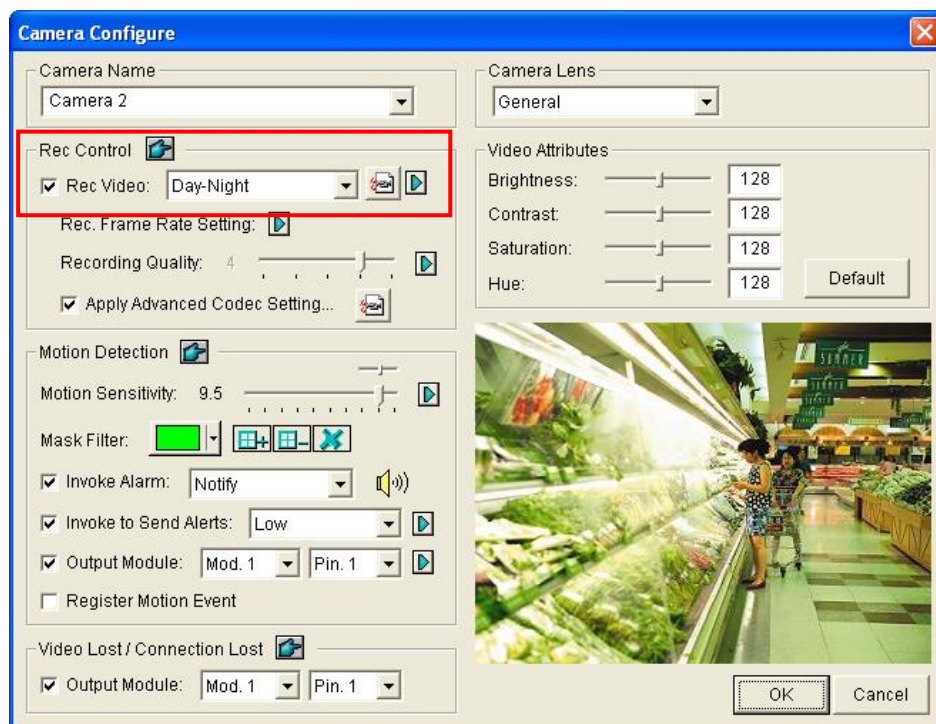
1. Click  on the main screen, click **System Configure** and select **Camera Configure**.
2. In the Camera Name field, type a new name for the camera.
3. Click **OK**.

## 4.1.4 Choosing Recording Mode

You can set each camera's recording mode individually for Motion Detection, Round-the-Clock or Day-Night.

1. Click  on the main screen, click **System Configure** and select **Camera Configure**.
2. From the Camera Name drop-down list, select one camera.
3. In the Rec Control field, select **Rec Video**, and use the drop-down list to select **Motion Detect**, **Round-the-Clock** or **Day-Night**.
4. If you select Day-Night, click the **Arrow** button after the Rec Video option to set up time frames.
5. Click **OK**.


For details on setting camera properties, refer to *Adjusting Individual Camera*, Chapter 1, *DVR User's Manual (C:\UserManual)*.

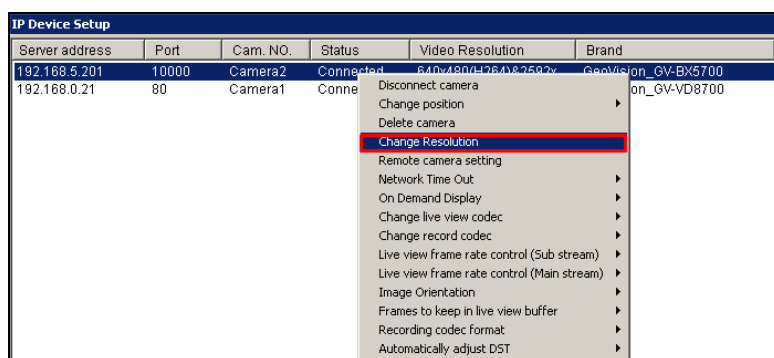




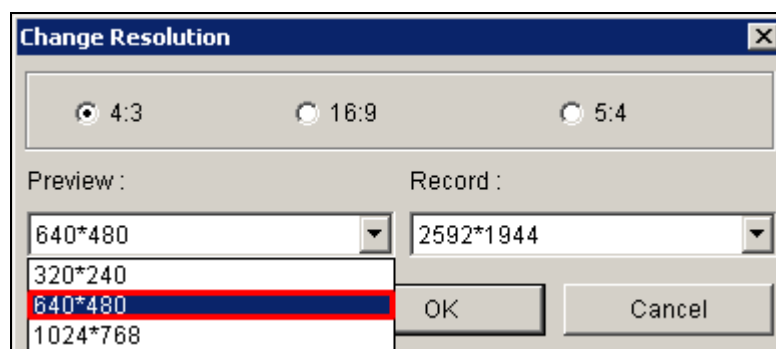
## 4.1.5 Changing Recording Resolution

You can set each camera's recording resolution individually.

1. Click  on the main screen, click System Configure and select IP Camera Install.
2. Right-click the camera and select **Change Resolution**.




3. Select the desired video resolution from the drop-down list and click **OK**.



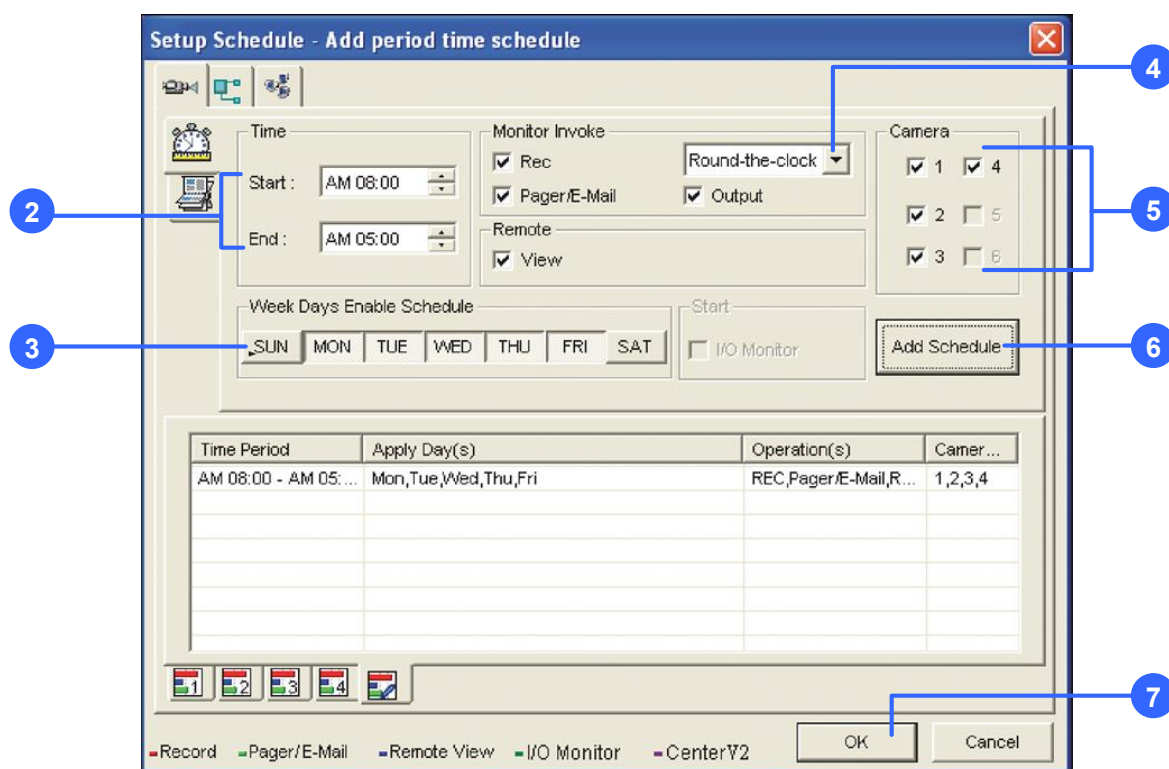
4. Repeat step 2 and 3 to set up the recording resolution for each camera.

## 4.2 Setting Up a Recording Schedule

You can program recording to turn on and off at a specific time each day.



1. Click  on the main screen, and select **Schedule Edit**.
2. Select or enter the Start and End time of the schedule.
3. Select day(s).
4. Select **Rec**, and use the drop-down list to select **Round-the-Clock** or **Motion Detect** for recording mode.
5. Select camera(s).
6. Click **Add Schedule**.
7. Click **OK**.

For details, refer to *Recording Schedule*, Chapter 1, *DVR User's Manual (C:\UserManual)*.



## 4.3 Playing Back Video

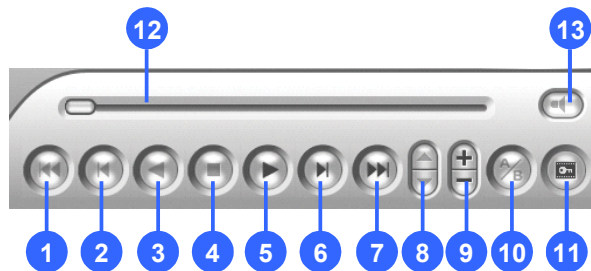
You can play back video recorded during a particular date and time.

1. Click  on the main screen, and select **Video/Audio Log**.
2. Select the camera you wish to view.
3. Select a date folder from the date tree.
4. Select a time from the Video Events list.
5. Click  to begin playback.

For details, refer to *Playing Back on ViewLog*, Chapter 4, *DVR User's Manual* (C:\UserManual).



## Playback Controls





No.	Name	No.	Name
1	Rewind to Beginning	8	Speed up/down
2	Frame-by-Frame Reverse	9	Zoom in/out
3	Rewind	10	A to B Playback
4	Stop	11	Frame-by-Frame / Real Time Playback
5	Play	12	Playback Scroll
6	Frame-by-Frame Forward	13	Audio on/off
7	Forward to End		

### Using the Zoom

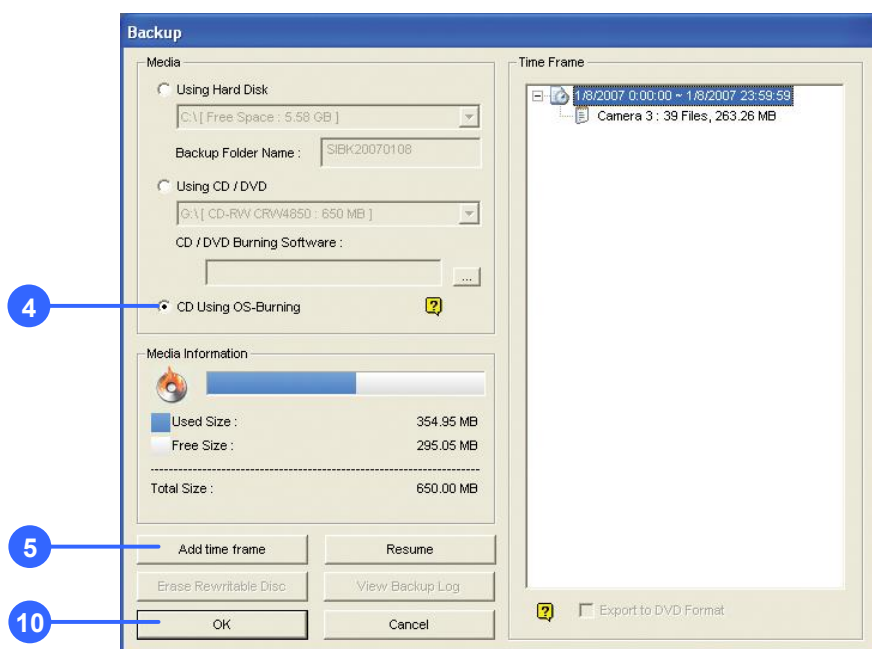
- **Zoom in:** Click the Zoom-in button, and then click on the area you want to magnify. Each click will increase the zoom level.
- **Zoom out:** Click the Zoom-out button, and then click on the image to zoom out. Each click will decrease the zoom level.

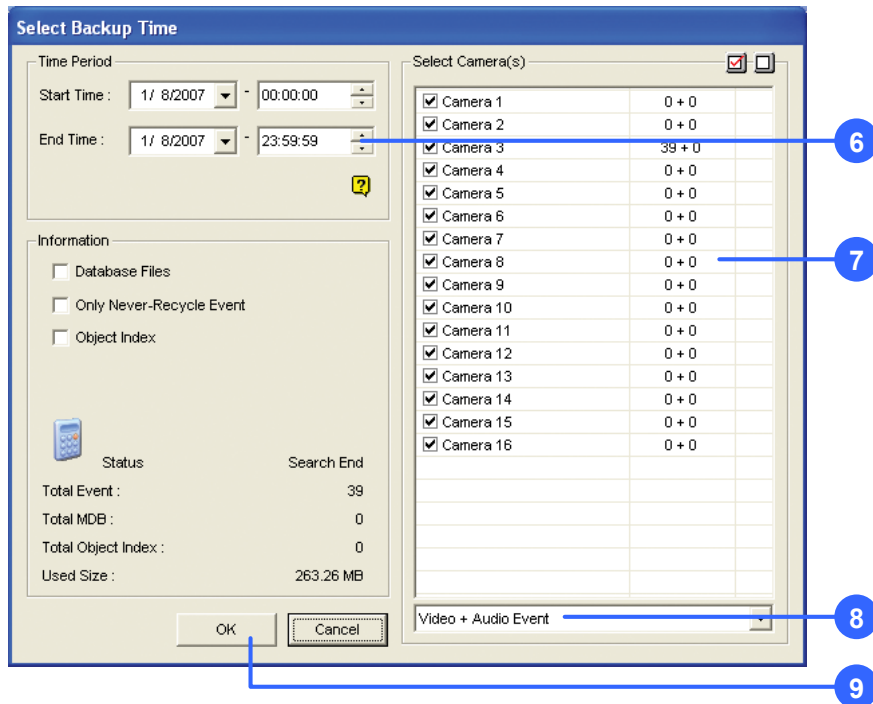
## 4.4 Backing Up Video Files

You can back up video files of the desired time to CD / DVD.

1. Insert the CD / DVD media into the drive.
2. Click  on the main screen, and select **Video/Audio Log**.
3. Click  on the functional panel.
4. Select **CD Using OS-Burning** to burn files with the inbuilt software of Windows.
5. Click **Add time frame**.
6. Enter the Start Time and End Time for backup.
7. Select the desired camera(s) for backup. The number of video and audio files of each camera is indicated respectively, e.g. "Camera 3 39+0" means the camera 3 has 39 video files and 0 audio file.
8. Select the types of events for backup, e.g. video, audio or both together.
9. Click **OK** to add the time frame. You can repeat steps 5-8 to create up to 10 time frames.
10. Click **OK** to start burning.

For details, refer to *Backing Up Video Files Using ViewLog*, Chapter 5, *DVR User's Manual* (C:\UserManual).





## Playback Controls

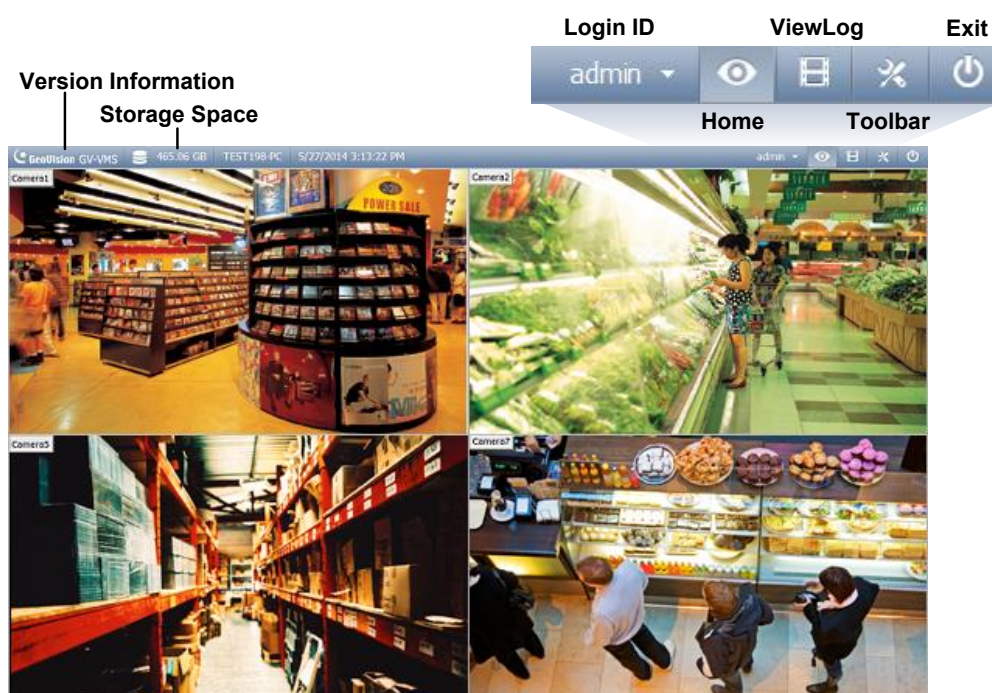
Open the backup folder, run **EZViewLog500.exe** , and then follow the instructions in the *Play Back Video* section.



## Chapter 5 GV-Tower VMS System V2 (Rev. G)

This chapter uses GV-VMS V18 as an example. For GV-VMS V20, see [GV-VMS User's Manual V20](#).





### 5.1 Main Screen

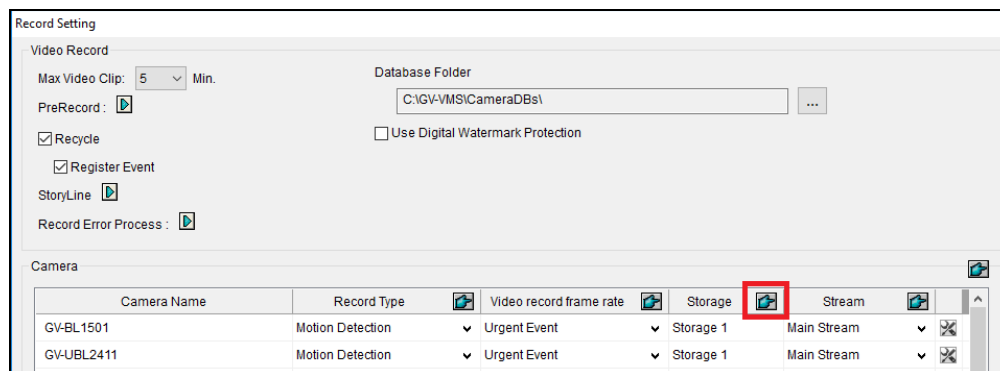


Name	Description
Login ID	Click to manage accounts and passwords for accessing GV-VMS.
Home	Shows the live view of connected cameras.
ViewLog	Shows a timeline of recorded events for playback.
Toolbar	<p>Brings up these options when <b>Home</b> is selected:</p> <ul style="list-style-type: none"> <li>• <b>Monitor:</b> Start / Stop monitoring, I/O monitoring and schedule monitoring</li> <li>• <b>Network:</b> Enable Webcam Server and connection to other GeoVision software.</li> <li>• <b>Tools:</b> Show / hide volume indicator and set up Object Index.</li> <li>• <b>Configure:</b> Set up camera, recording, system, schedule, video processing and I/O devices.</li> <li>• <b>Content List:</b> Access live view layout, camera list, I/O device list and Panorama view.</li> </ul> <p>Brings up these options when <b>ViewLog</b> is selected:</p> <ul style="list-style-type: none"> <li>• <b>Display Play Panel:</b> Display or hide the ViewLog timeline. This function is grayed out when the <b>Pinned</b> button is selected in the bottom-right corner.</li> <li>• <b>Tools:</b> Manage event search, system log, event backup and event export.</li> <li>• <b>Configure:</b> Apply video effects and text overlay during playback.</li> <li>• <b>Content List:</b> Manage playback layout and access camera list.</li> </ul>
Exit	Brings up these options: Minimize and Exit.

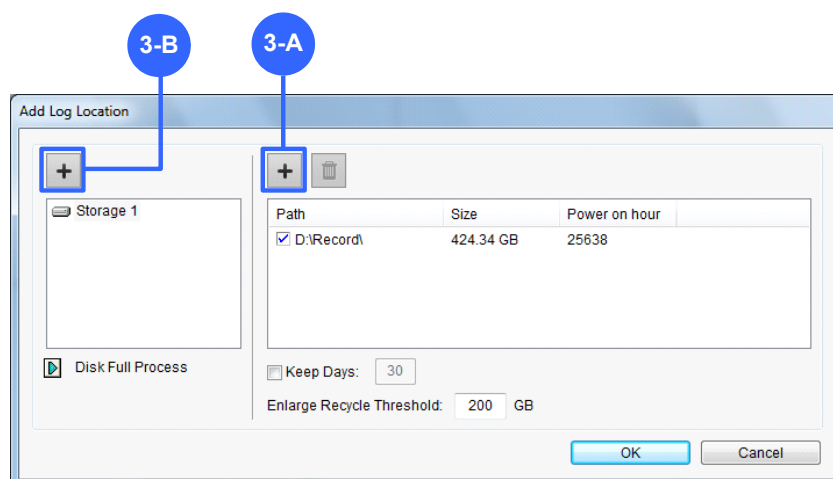




## 5.1.1 Adding Hot Swap Drive to Recording Path

1. On GV-VMS, click **Home** , select **Toolbar** , select **Configure** , select **System** Configure, click **Record Setting**. The Record Setting dialog box appears.
2. Click the Arrow button  next to **Storage**.



3. On the Add Log Location dialog box, add a hard drive to the recording path by following the steps below:



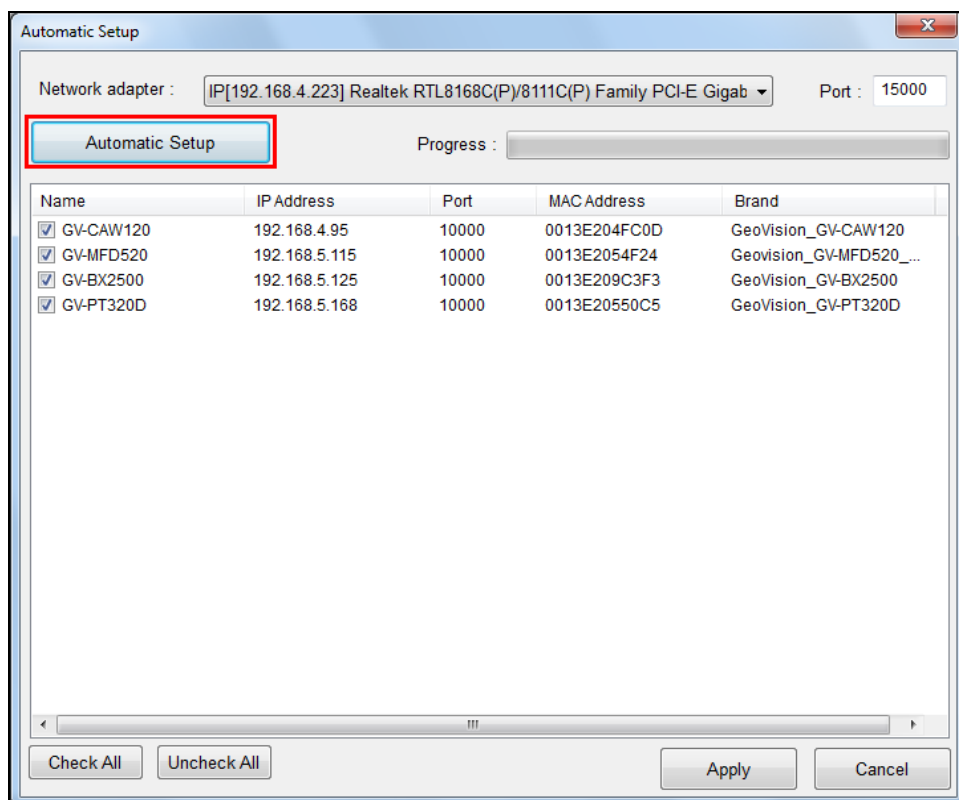
- A. To add a new folder in the first storage group, click the **Add** button  on the right pane and select a folder. Each partition can only contain 1 storage folder (e.g. only 1 folder in D drive).
  - B. To add a new storage group, click the **Add** button  on the left pane and repeat the step 3-A to assign at least one folder to the storage group.
  - C. Click **OK**.
4. To add another formatted hard drive for storage, repeat the above steps.

For details on setting the recording path, see *Setting Up the Video Storage Location* Chapter 1, *GV-VMS User's Manual (C:\UserManual)*.

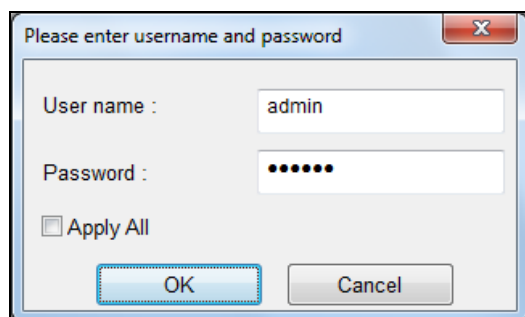
## 5.1.2 Adding IP Cameras to GV-VMS

The **Automatic Setup** dialog box appears automatically after you launch the system.

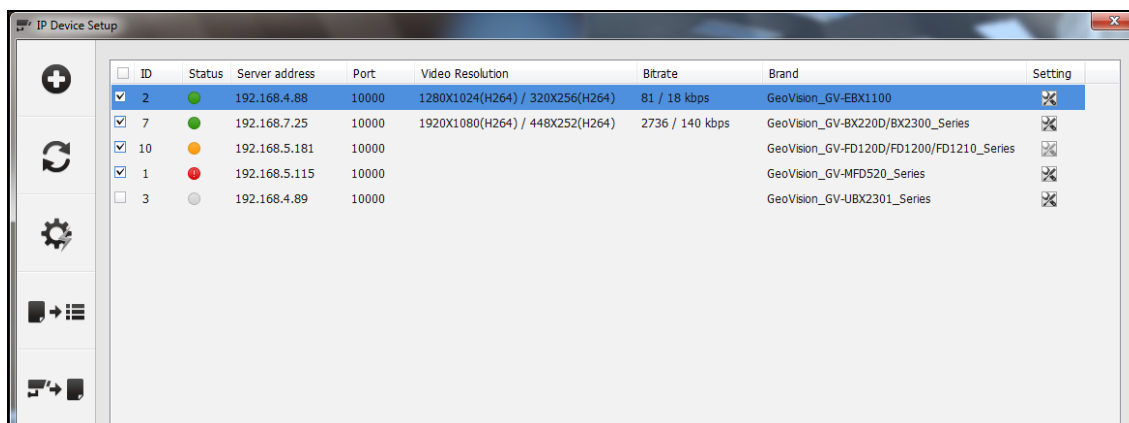
1. Click **Automatic Setup** to see the list of IP cameras detected on the LAN.



2. The default login information for cameras is **admin / admin**. Double-click the camera to type different ID and password in the dialog box below if needed.




3. Make sure the cameras you want to add are selected and click **Apply**. The cameras added are now listed in the IP Device List.







Status icons available:

- **Connected** The camera is connected.
- **Connecting** GV-VMS is trying to connect to the camera.
- **Connection Failed** Unable to connect to the camera. Place the cursor on the red icon to see the error message.
- **Inactive Camera** The camera is inactive. Click the checkbox to connect.
- ☒ **Started Monitoring** The camera is under monitoring.
- ☒ **Pre-Rec Enabled** Pre-recording is enabled.

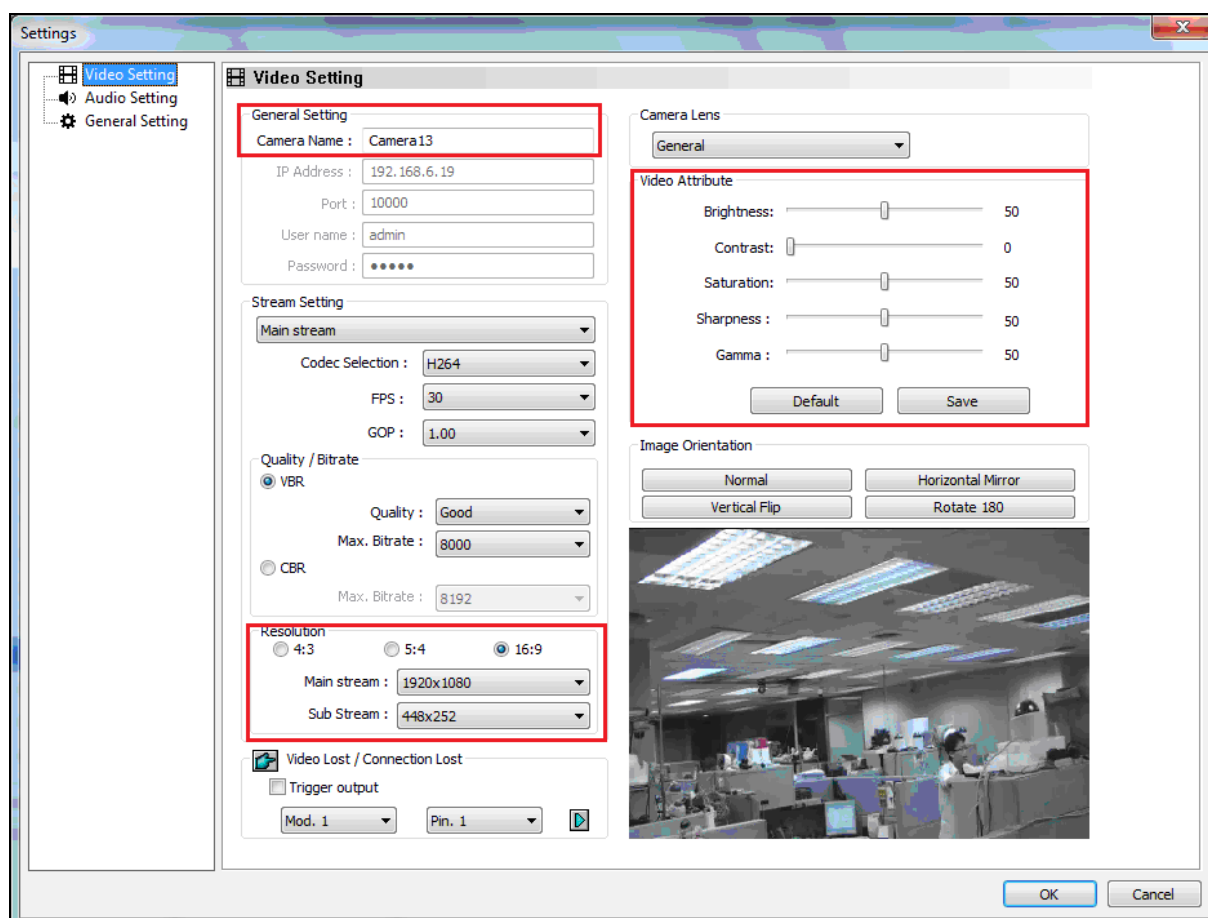
4. To adjust camera settings, click the **Setup** button  of a camera. Refer to 5.2 *Configuring Camera Settings* in the Quick Start Guide for details.
5. Close the dialog box by clicking X on the top-right corner. When adding cameras for the first time, the cameras will be automatically assigned to the live view grid.

For details, refer to *IP Camera Setup*, Chapter 2, *GV-VMS User's Manual* (C:\UserManual).

## 5.2 Configuring Camera Settings




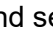
After the cameras are added, you can configure their settings, such as video, audio and other general settings. Click the **Setup** button  of an active camera in the IP Device List (**Home**  > **Toolbar**  > **Configure**  > **Camera Install**).

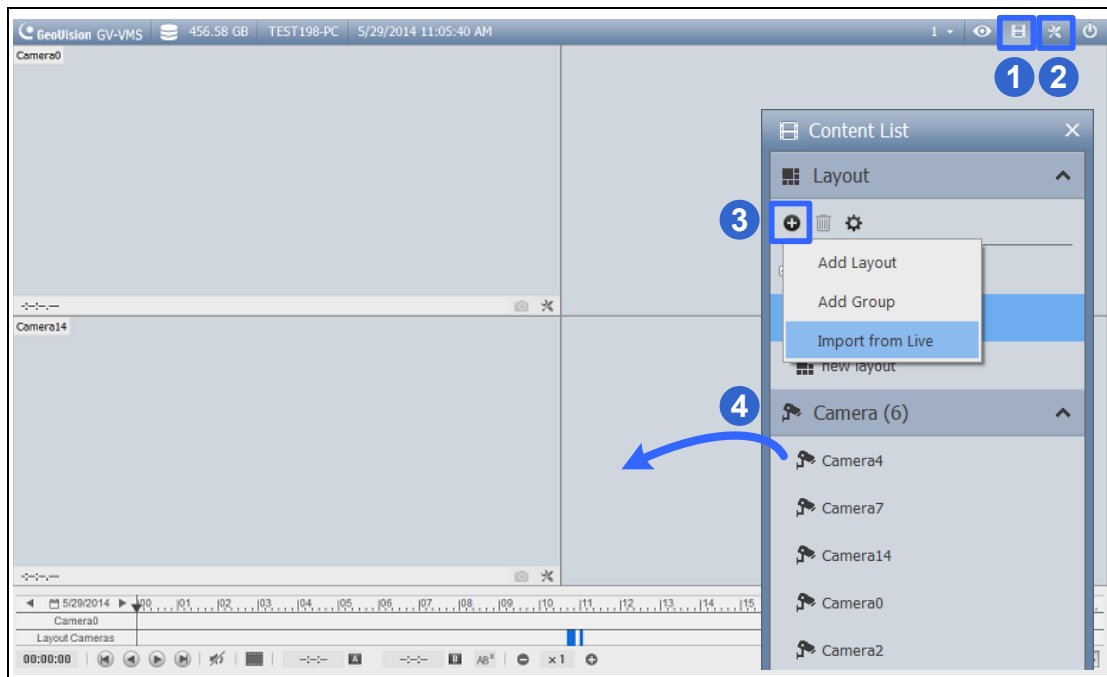
In the Video Setting, you can change the camera name, the display ration and resolution of the videos and adjust video attributes.



For details, refer to *Configuring Individual IP Cameras*, Chapter 2, *GV-VMS User's Manual* (C:\UserManual).

## 5.3 Playing Back Recorded Videos

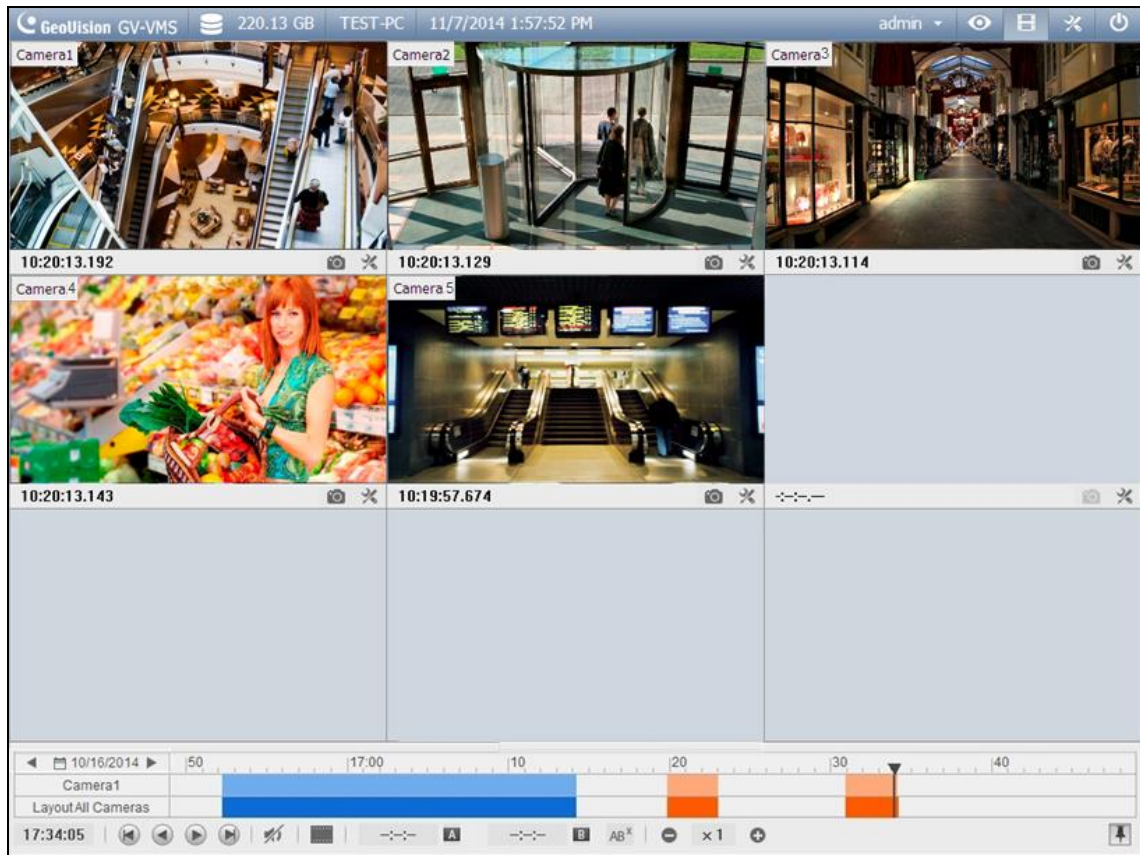
- 1 To access recorded videos, click the **ViewLog** icon  in the top-right corner.
- 2 Open the Content List by clicking **Toolbar**  and selecting **Content List** .
- 3 Click **Layout** in the Content List, click the **Add** button , and select **Add Layout** to create a new layout or select **Import from Live** to import existing layouts from live view.
- 4 You can also drag camera you want to play back onto the playback screen from the Content List if needed.



- 5 On the left of the timeline, select a date.





- 6 Click on the timeline to select a time with video recordings. You can scroll the mouse to zoom in and out on the timeline.



- 7 Use the playback control buttons to play back recordings. Place the cursor on the buttons to see the name of the function.

For details, refer to *Video Playback*, Chapter 4, *GV-VMS User's Manual (C:\UserManual)*.

## 5.4 Backing Up Recorded Videos

- 1 In ViewLog, click **Toolbar** , select **Tools**  and select **Backup**. This dialog box appears.
- 2 Click **Add time frame** to select the time period and the cameras you want to back up and click **OK**.
- 3 Select a media to back up the recorded files using **Hard Disk**, **CD / DVD / BD** or **OS-Burning**. The supported software for burning to CD / DVD / BD is Nero Burning Rom version 9 or before.
- 4 To include the ViewLog player to the backup files, select **Include Player** at the bottom-right of the dialog box. If no player is selected, you can only play the recordings using computer installed with GV-VMS or GeoVision video code.

For details, refer to *Backup, Deletion and Repair*, Chapter 5, *GV-VMS User's Manual* (C:\UserManual).



## Chapter 6 Restore the System

You can restore the operating system and system software backup files using Windows Tool. Refer to the instructions [here](#).