



# GV-IP Speaker User's Guide

This document describes how to add and manage GV-IP Speaker with GV-Control Center, GV-Edge Recording Manager, GV-VMS and GV-AI Guard. It also covers how to locate the speaker and update its firmware using GV-IP Speaker Setting Kits.

|  |           |
|--|-----------|
| <b>1. Compatible Software .....</b>                                    | <b>2</b>  |
| <b>2. Adding to GV-Control Center / GV-Edge Recording Manager.....</b> | <b>2</b>  |
| 2.1 Searching for a Speaker .....                                      | 2         |
| 2.2 Manually Adding a Speaker .....                                    | 3         |
| 2.3 Associating a Speaker with a Camera .....                          | 4         |
| 2.4 Speaker Controls .....   | 5         |
| <b>3. Adding to GV-VMS / GV-AI Guard.....</b>                          | <b>7</b>  |
| 3.1 Searching for a Speaker .....                                      | 7         |
| 3.2 Manually Adding a Speaker .....                                    | 8         |
| 3.3 Associating a Speaker with a Camera .....                          | 9         |
| 3.4 Speaker Controls .....   | 10        |
| <b>4. GV-IP Speaker Setting Kits .....</b>                             | <b>12</b> |
| 4.1 Changing the IP Address .....                                      | 15        |
| 4.2 Updating the Firmware .....  | 16        |



## 1. Compatible Software

- **GV-VMS** V17.4.8 / V18.3.3 / V20.0.0 or later
- **GV-AI Guard** V2.2 or later
- **GV-Control Center** V4.2.0 or later
- **GV-Edge Recording Manager (Windows Version)** V2.3.0 or later

## 2. Adding to GV-Control Center / GV-Edge Recording

### Manager

Add a speaker to GV-Control Center or GV-Edge Recording Manager and assign the speaker to a channel.

### 2.1 Searching for a Speaker

To use the auto search function, the speaker must be installed on the same LAN as GV-Control Center / Edge Recording Manager.

1. On the Host List, click the **Add** button > **Add Host** > **Search Host**.
2. In the Search Host dialog box, select the discovered speaker.
3. You are prompted to enter your ID and Password. By default, the ID is **admin** and the Password is **admin123**. Click **OK**.
4. You can add multiple IP speakers by entering their respective IDs and Passwords.
5. Click **Add Selected Hosts**. The speaker is added to the Host List.

---

**Note:** To change the default ID and Password, you need to install the GV-IP Speaker Setting Kits, and access **Setting** > **ONVIFParam**. See 4. *GV-IP Speaker Setting Kits*.

---



## 2.2 Manually Adding a Speaker

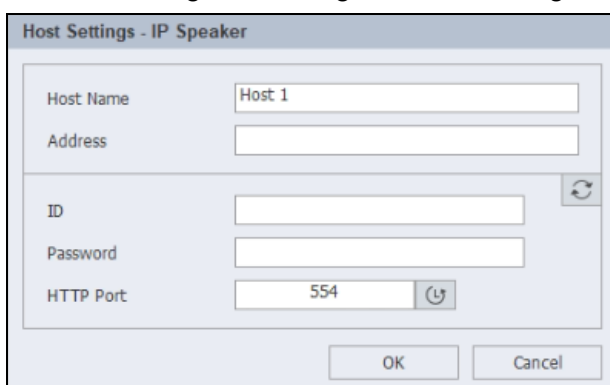
To use this method, you must already know the IP address of the speaker in order to add it to GV-Control Center / Edge Recording Manager.

---

**Note:** The speaker, by default, has a DHCP-enabled IP address, and no fixed IP address. See 3. *GV-IP Speaker Setting Kits* for discovering its IP address.


---

1. On the Host List, click the **Add** button > **Add Host** > **Add IP Speaker**.
2. On this dialog box, configure the following settings:



The dialog box titled "Host Settings - IP Speaker" contains the following fields and controls:

- Host Name:** A text field with "Host 1" entered.
- Address:** An empty text field.
- ID:** An empty text field with a refresh icon (circular arrow) to its right.
- Password:** An empty text field.
- HTTP Port:** A text field with "554" entered and a lock icon to its right.
- Buttons:** "OK" and "Cancel" buttons at the bottom.

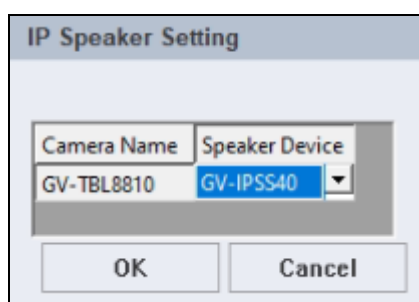
- **Host Name:** Name the speaker.
  - **Address:** Type the IP address of the speaker.
  - **ID & Password:** Type ID and Password. By default, the ID is **admin** and the Password is **admin123**.
  - **HTTP Port:** It is port 554 by default.
3. Click **Update Information**  to check if the speaker is connected successfully.
  4. Click **OK**. The speaker is added to the Host List.




## 2.3 Associating a Speaker with a Camera

You can associate a speaker with a camera of the following hosts: VMS / NVR, IP Camera, Video Server, Recording Server, SNVR, FR Server, AI Guard, UA HD DVR, UA SNVR, UA IP Camera.

1. On the Host List, right-click a supported host, and select **IP Speaker Setting**.
2. Select a speaker under Speaker Device, and click **OK**. The speaker is associated.



There are two ways to broadcast audio through the associated speaker:

1. Drop the camera to Live View and click the **Microphone** icon  to broadcast.
2. Click the speaker on the Host List to broadcast. See 2.4 *Speaker Controls* below.

---

### Note:

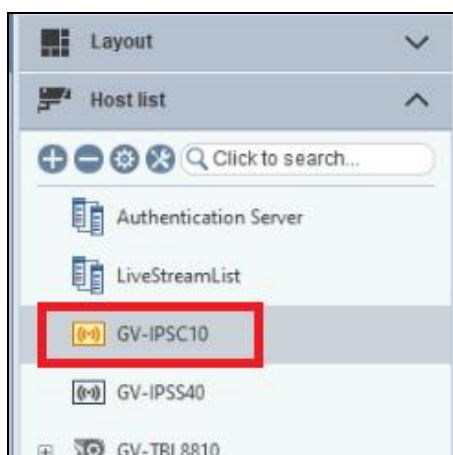
1. If you want to associate a camera with another speaker, remove the camera's image from the Live View window before enabling another speaker with the IP Speaker Setting.
  2. You can associate a speaker with multiple cameras.
-



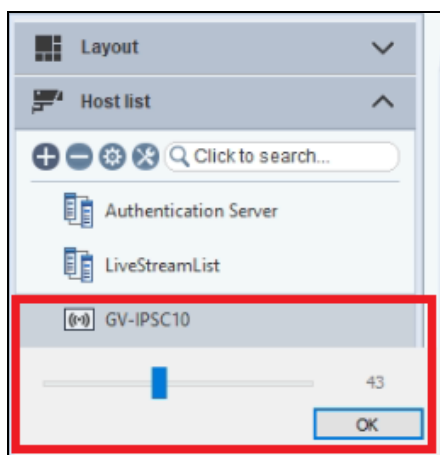
## 2.4 Speaker Controls

Make sure a microphone has been installed in the GV-Control Center / Edge Recording Manager system before broadcasting.

- **One-to-One Broadcast:** To broadcast audio through a specific speaker, press and hold the speaker icon. When the speaker is broadcasting, the icon turns orange.



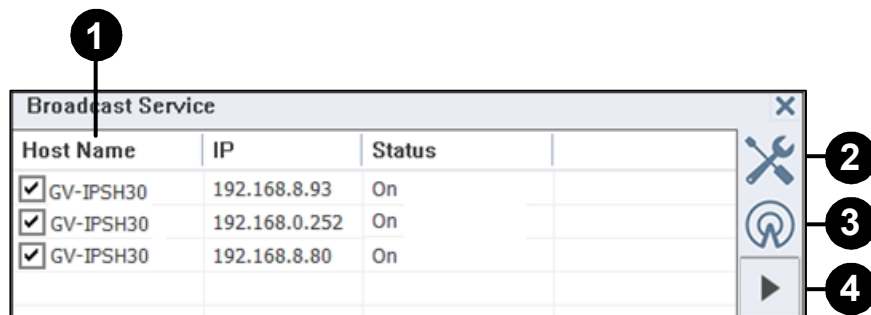
- **Volume:** To change the volume, right-click the speaker icon and select **Volume Setting**.



- **Play a WAV file:**
  1. Right-click the speaker icon, select **Play Wave File** and locate a .WAV file to play.
  2. When the "Want to Repeat Wave File?" message appears, click **Yes** to play the WAV file continuously.
  3. To stop playing, double-click the speaker icon.



- **Group Broadcast:** To broadcast audio through multiple speakers, select more than one speaker on the Host List, right-click on one of them, and select **Add to Broadcast Service** to display the control window shown below.



| No. | Name      | Description  |
|-----|-----------|--|
| 1   | Host      | Select the desired hosts for audio broadcasting.   |
| 2   | Setup     | <ul style="list-style-type: none"> <li>■ <b>Select Audio File:</b> Locate a .wav file to play</li> <li>■ <b>Opacity:</b> Select the opacity level of the window from 20% (fully transparent) to 100% (fully opaque).</li> <li>■ <b>Always on top:</b> Always display the window on top of the screen.</li> </ul> |
|     |           |  |
|     |           |  |
| 3   | Broadcast | Start / stop audio broadcasting.   |
| 4   | Play File | After selecting an audio file, click the button to start/stop playing.   |

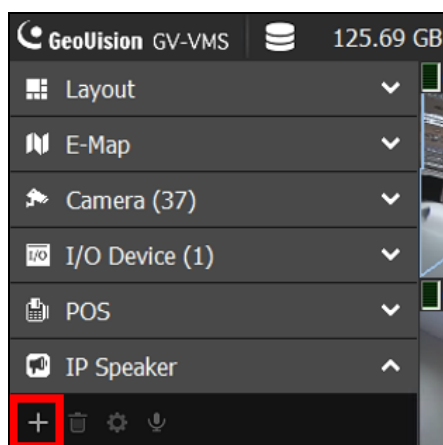


## 3. Adding to GV-VMS / GV-AI Guard

### 3.1 Searching for a Speaker

To use the auto search function, the speaker must be installed on the same LAN as GV-VMS or GV-AI Guard.

1. Under the IP Speaker of the Content List, click the **Add** button > **Scan Device**.



2. In the Scan Device dialog box, select a discovered device.
3. You are prompted to enter your ID and Password. By default, the ID is **admin** and the Password is **admin123**. Click **OK**.
4. Click **Add selected devices**. The speaker is added to the Content List.

---

**Note:** To change the default ID and Password, you need to install the GV-IP Speaker Setting Kits, and access **Setting > ONVIFParam**. See 4. *GV-IP Speaker Setting Kits*.

---



## 3.2 Manually Adding a Speaker

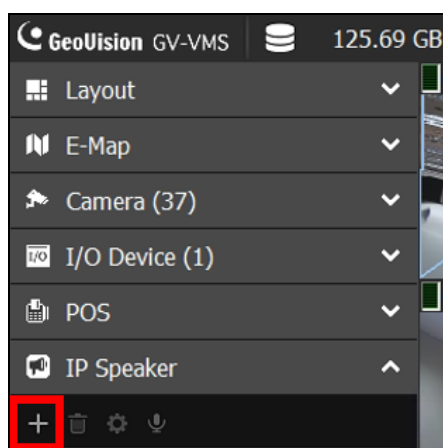
To use this method, you must already know the IP address of the speaker in order to add it to GV-VMS or GV-AI Guard.

---

**Note:** The speaker, by default, has a DHCP-enabled IP address and no fixed IP address. See 3. *GV-IP Speaker Setting Kits* for discovering its IP address.

---

1. Under the IP Speaker of the Content List, click the **Add** button > **Add IP Speaker**.



2. On the Add IP Speaker dialog box, configure the following settings:
  - **Name:** Name the speaker.
  - **IP:** Type the IP address of the speaker.
  - **Port:** Change it if necessary or keep the default value 554.
  - **ID & Password:** Type ID and Password. By default, the ID is **admin** and the Password is **admin123**.
3. Click **OK**. The speaker is added to the Content List.

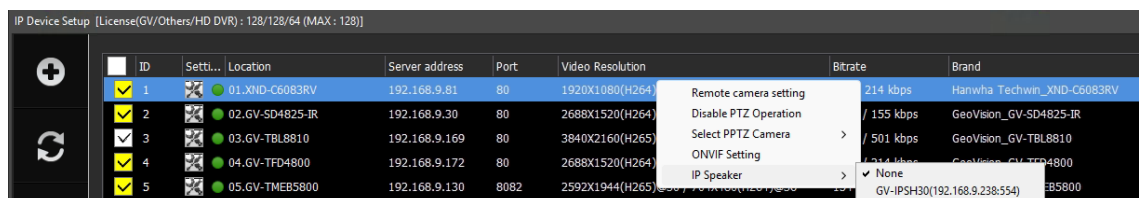





### 3.3 Associating a Speaker with a Camera

Click **Home**  > **Toolbar**  > **Configure**  > **Camera Install** to open the IP Device Setup dialog box.

In the IP Device Setup dialog box, right-click a camera, select **IP Speaker**, and select a speaker. You can associate a speaker with multiple cameras.



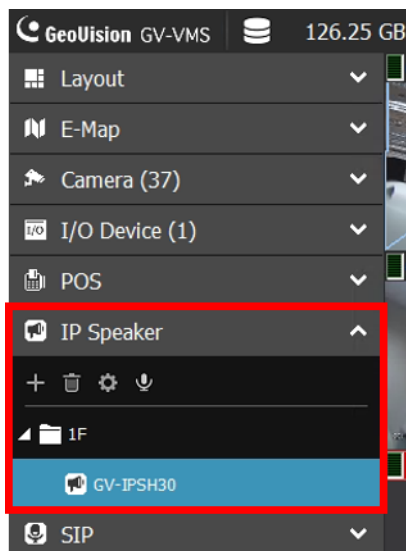
There are two ways to broadcast audio through the associated speaker:








1. Drop the camera to the live view grid and click the **Microphone** icon  to broadcast.
2. Click the speaker in the Content List to broadcast. See [3.4 Speaker Controls](#) below.



### 3.4 Speaker Controls

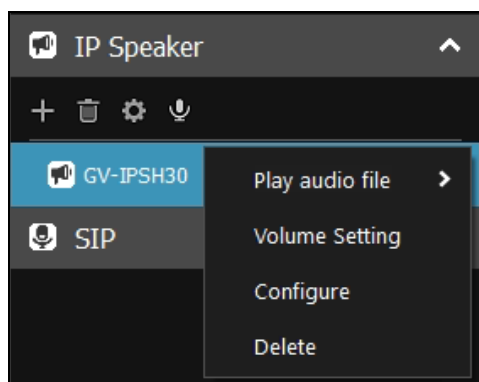
Make sure a microphone has been installed in the GV-VMS or GV-AI Guard system before broadcasting.



| Function  | Description   |
|---|---|
| <b>Add</b><br>       | <ul style="list-style-type: none"> <li>■ <b>Scan Device:</b> Detect speakers on the same LAN as GV-VMS or GV-AI Guard.</li> <li>■ <b>Add IP Speaker:</b> Manually add an IP speaker. See <i>3.2 Manually Adding a Speaker</i>.</li> <li>■ <b>Add Group:</b> Create a group for speakers.</li> </ul> |
| <b>Delete</b><br>    | Delete a listed speaker or a created group.   |
| <b>Configure</b><br> | Select a speaker and click the icon to configure its name, IP address, port, login ID, and password.  |
| <b>Speaker</b><br>   | Press and hold the icon. The icon turns green  . The operator can then broadcast audio through a selected group of speakers.   |
| <b>Speaker</b><br>   | Press and hold the icon. The icon turns blue  . The operator can then broadcast audio through a selected speaker.  |



When you right-click a speaker on the Content List, the following options appear:

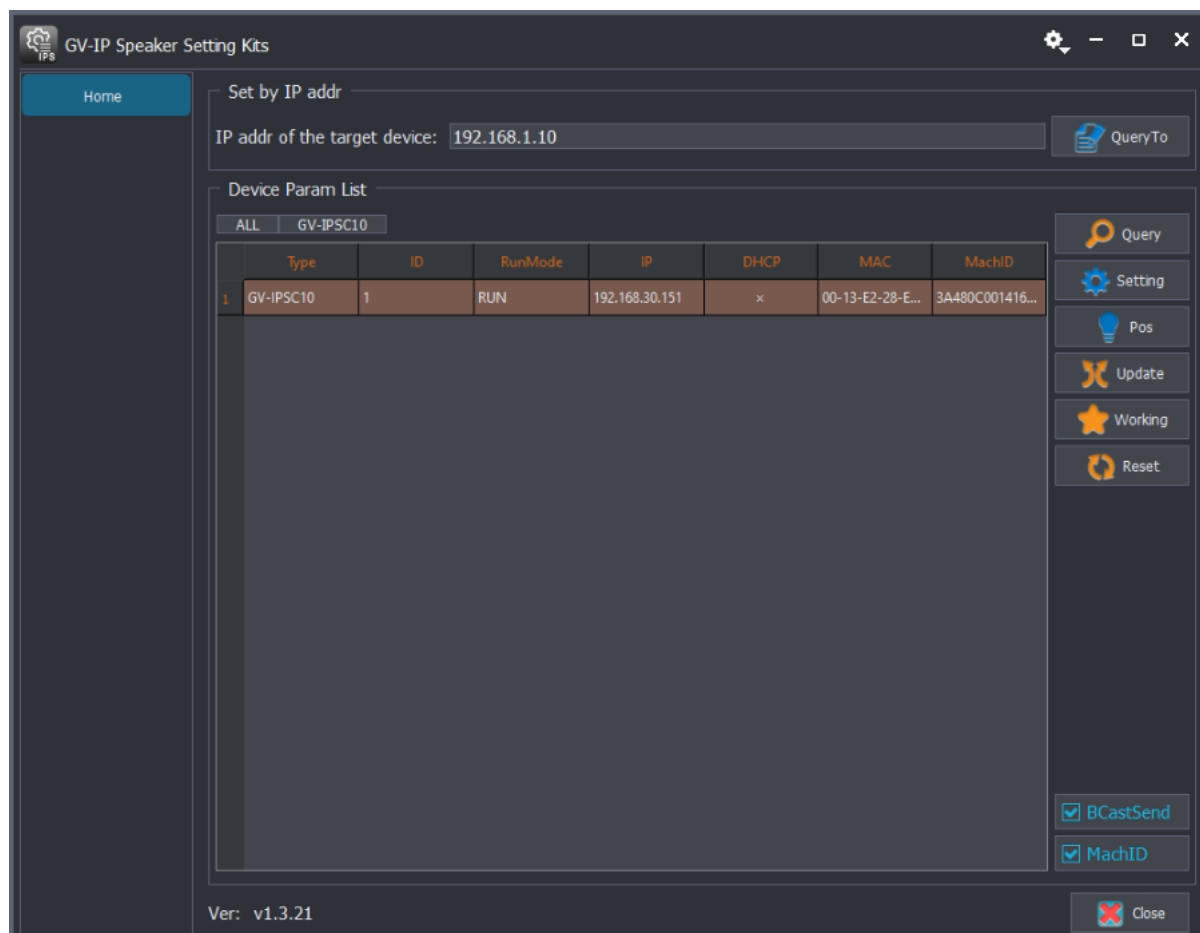


| Function               | Description   |
|------------------------|---|
| <b>Play Audio File</b> | Plays a selected audio file (.wav or .mp3). To stop playing, double-click the speaker icon. |
| <b>Volume Setting</b>  | Changes the volume of the speaker.  |
| <b>Configure</b>       | Changes the connection settings of the speaker.   |
| <b>Delete</b>          | Removes the speaker from the Content List.  |


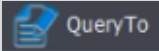
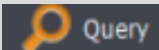


## 4. GV-IP Speaker Setting Kits

Download and install the GV-IP Speaker Setting Kits from our [download page](#).

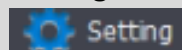


The controls in the window:

| Function   | Description   |
|--|---|
|                     | Select one of network interface cards if installed.   |
| <b>Query To</b><br> | If you already know the IP address of the speaker, type its IP address in the left field and click <b>Query to</b> to find it in the network. |
| <b>Query</b><br>    | Find the IP address of the speaker, under the same LAN as the GV-IP Speaker Setting Kits and GV-Control Center.                               |



## Setting



When you click the **Setting** button, you will be prompted to enter Use and Password. By default, the Use ID is **admin** and the Password is **admin123**.

### [NormParam]

- **DevID:** The Device ID.
- **Dev Network Param Setting:** Configure a fixed IP address for the speaker. Or select **DHCP** to have an IP address assigned by a DHCP server within the network.
- **Update IP:** The option is used to update the firmware of the speaker. Enter the IP address of the PC used to update the firmware.
- **Confirm Verify:** Enable to check any IP conflicts.
- **ReVal:** Return factory default settings.
- 

### [ONVIFParam]

By default, the Use ID is **admin** and the Password is **admin123**. You can change both ID and Password.

### [SipParam]

Connect a GV-IP Speaker to the SIP server. Use the SIP server to call the speaker and speak into the microphone installed on the SIP server in order to broadcast via the speaker.

- **RegIp:** Type the IP address of the SIP server.
- **RegPort:** The port of the SIP server is 5060 by default.
- **Use:** Type the ID number of the speaker as assigned on the SIP server.
- **Password:** Type the password of the speaker as assigned on the SIP server.





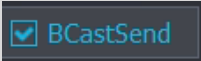
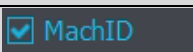
### [Setting]

#### For GV-IP Speaker Setting Kits (V1.3.27 or later)

The Setting Kits enable the adjustment of speaker volume when the speaker is connected to third-party software (GeoVision software is not supported).

- **DeVol:** Change the speaker volume from 0 to 100. The higher the value, the greater the volume.
- **Priority/RTP:** Set the connection protocol to ONVIF or SIP.



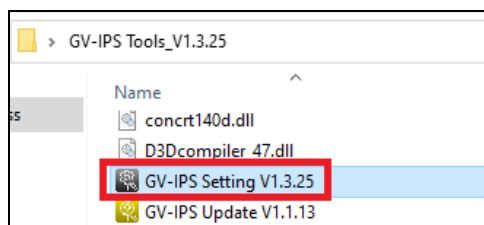
|   |   |
|---|---|
|   | <p><b><u>For GV-IP Speaker Setting Kits (earlier than V1.3.27)</u></b></p> <ul style="list-style-type: none"> <li>■ <b>CompatProgram:</b> Keep the compatible programs option turned OFF.</li> <li>■ <b>1/PlayPriorityH, 1/PlayPriorityM, 1/PlayPriorityL:</b> Set High, Medium and Low priorities to the protocols IP, SIP, ONVIF / RTSP. The default order of priority is IP, SIP, and ONVIF / RTSP.</li> </ul> |
| <p><b>Pos</b></p>      | Click the button to play a sample video through the speaker.  |
| <p><b>Update</b></p>   | To update the speaker firmware, see <i>4.2 Updating the Firmware</i> .  |
| <p><b>Working</b></p>  | Change the Run Mode of the speaker from BOOT to RUN.  |
| <p><b>Reset</b></p>   | Restart the speaker.  |
|                      | Enable this option to use the broadcasting method to set up a speaker when the speaker and the computer used for configure it are on different network segments.  |
|                      | Machine ID. Enable <b>BCastSend</b> and <b>MachID</b> for speaker configurations when two speakers have the same IP address.  |



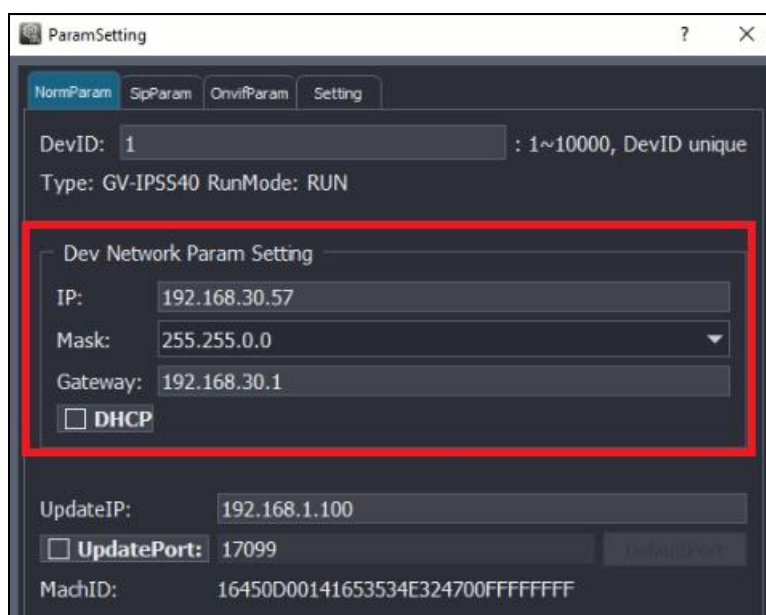
## 4.1 Changing the IP Address

To change the IP address of a speaker, follow the steps below:

1. Run **GV-IPS Setting**.



2. Click **Query** to detect speakers on the same LAN.
3. Select a speaker in the list.
4. Click **Setting**. You are prompted to enter the ID and password of the speaker.
5. Change the speaker's IP settings. Click **OK**.

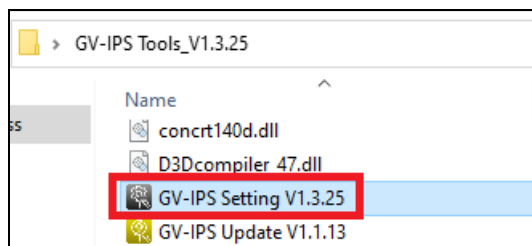





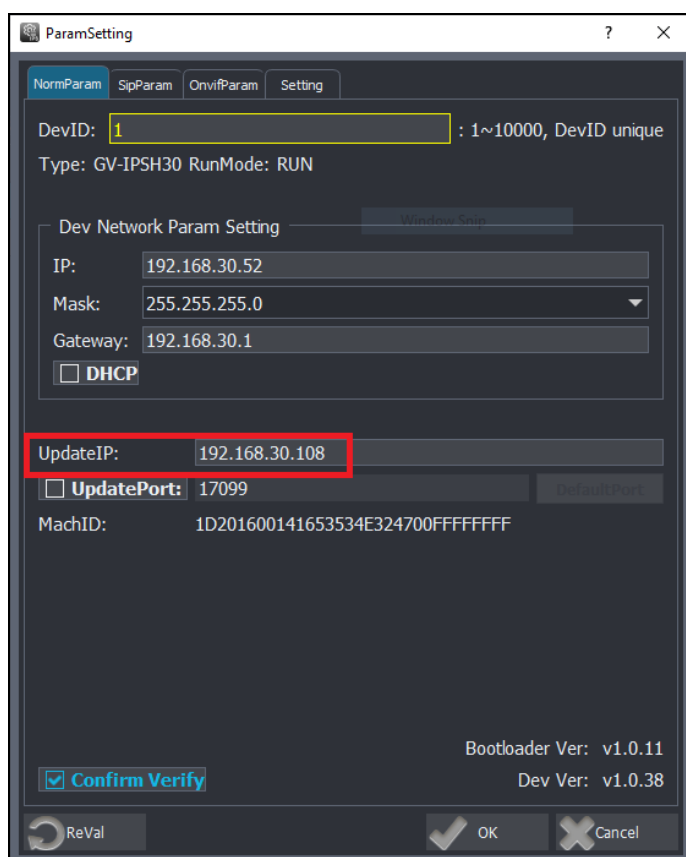
## 4.2 Updating the Firmware

To update the speaker's firmware, follow the steps below:

1. Run **GV-IPS Setting**.



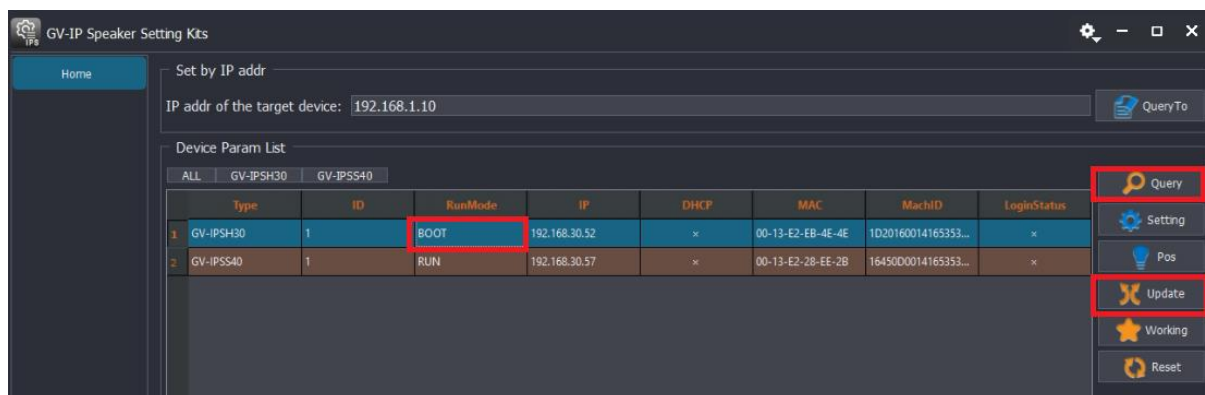
2. Click **Query** to detect speakers on the same LAN.
3. Select a speaker in the list.
4. To specify the IP address of the PC used to upgrade firmware, click  and type the IP in the **Update IP** field.





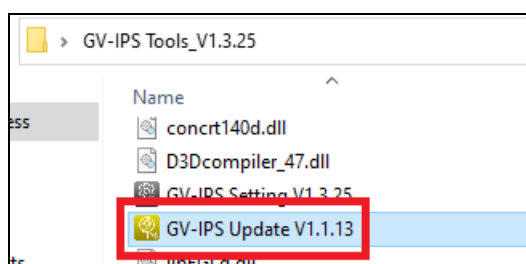


- To connect the speaker to the PC used to update the firmware, click **Update**, enter the speaker's ID and password, and then click **Query**. The Run Mode of the speaker in the list changes from RUN to BOOT.

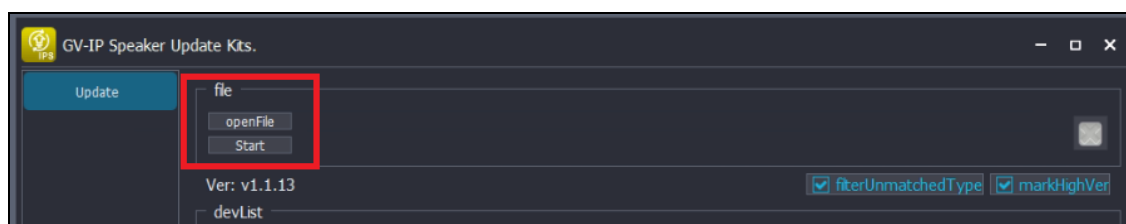


**Note:** If the speaker disappears from the list after you click **Update**. Wait a minute and then click **Query** to detect it again.

- Run **GV-IP Speaker Update Kits**.

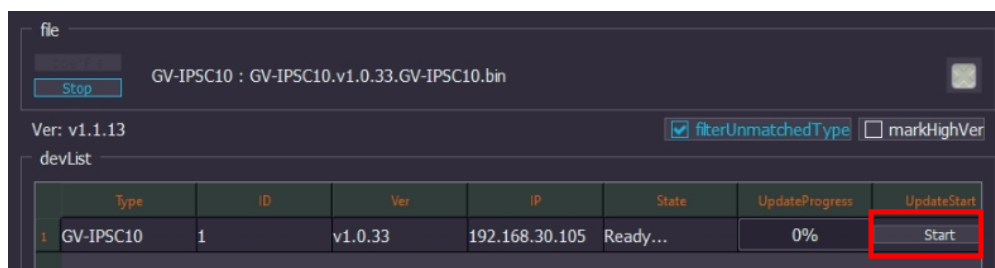


- Click **Open File** to locate a firmware file.
- Click **Start** to search for speakers in BOOT mode.





- C、 Select a speaker in the list
- D、 Click **Start** to start firmware upgrade.




On the **GV-IP Speaker Update Kits** user interface:

- **filterUnmatchedType**: When the option is enabled, only search for speakers with the same firmware versions.
- **markHighVer**: When the option is enabled, it will detect new firmware version available, and display the message "Higher version".

|   |           |   |         |                |                |
|---|-----------|---|---------|----------------|----------------|
| 1 | GV-IPSC10 | 1 | v1.0.33 | 192.168.30.105 | Higher version |
|---|-----------|---|---------|----------------|----------------|

---

**IMPOPTANT:** If a speaker's Run Mode is set to **BOOT**, the connection to the speaker is terminated. To change the Run Mode from **BOOT** to **RUN**, select the speaker from the list and click **Working** .

---