

Quick Start Guide



GV-TXVL1610

The Vision of Security



Thank you for purchasing GV-HD DVR. This guide is designed to assist the new user in getting immediate results from the GV-HD DVR. For advanced information on how to use the GV-HD DVR, please refer to *GV-TXVL1610 User's Manual*.



© 2025 GeoVision, Inc. All rights reserved.

Under the copyright laws, this manual may not be copied, in whole or in part, without the written consent of GeoVision.

Every effort has been made to ensure that the information in this manual is accurate. GeoVision, Inc. makes no expressed or implied warranty of any kind and assumes no responsibility for errors or omissions. No liability is assumed for incidental or consequential damages arising from the use of the information or products contained herein. Features and specifications are subject to change without notice.

GeoVision, Inc.
9F, No. 246, Sec. 1, Neihu Rd.,
Neihu District, Taipei, Taiwan
Tel: +886-2-8797-8377
Fax: +886-2-8797-8335
<http://www.geovision.com.tw>

Trademarks used in this manual: *GeoVision*, the *GeoVision* logo and GV series products are trademarks of GeoVision, Inc. *Windows* is the registered trademark of Microsoft Corporation.

July 2025

Scan the following QR codes for product warranty and technical support policy:



[Warranty]



[Technical Support Policy]

Contents

1.	Introduction.....	1
1.1	LED Indicator.....	1
1.2	Rear View.....	2
2.	Disk Installation.....	3
2.1	Preparation.....	3
2.2	Install Disks.....	3
3.	Startup and Shutdown.....	4
4.	Getting Started.....	5
4.1	Startup Wizard.....	5
4.2	Adding Cameras.....	6
4.3	Changing Camera Type.....	7
5.	Recording and Playback.....	7
6.	Remote Access via Web Client.....	8
7.	Firmware Upgrade.....	9
7.1	Upgrading Firmware on the DVR.....	9
7.2	Upgrading Firmware Using GV-IP Device Utility.....	10

1. Introduction

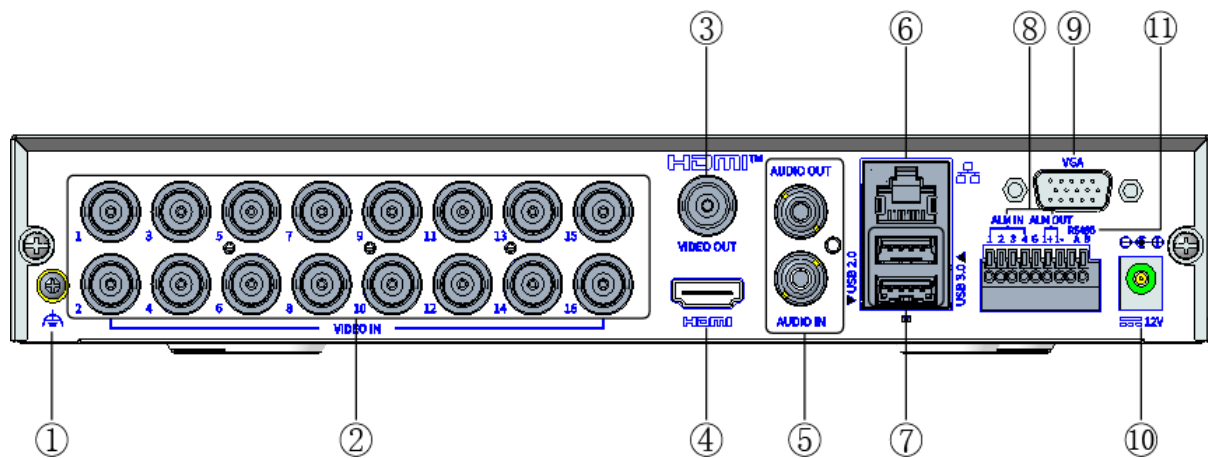
Welcome to the *GV-TXVL1610 Quick Start Guide*. In the following sections, you will learn about the basic installations and configurations. For more details, see [GV-TXVL1610 User's Manual](#).

Note: The DVR has a default ID (admin) and password (admin). For the first time you run the DVR, you will be required to set your password immediately in order to protect your privacy. Please be sure to record your username and password and save them in a secure place.

1.1 LED Indicator

LED	Status	Description
RUN (Operation)	Steady on	Normal.
	Blinking	Starting up.
NET (Network)	Steady on	Connected to network.
HD (Hard disk)	Steady on	No disk; or disk is abnormal
	Blinking	Reading or writing data

1.2 Rear View



No.	Description	No.	Description
1	Grounding	2	Video Input
3	Video Output	4	HDMI Output
5	Audio In / Out	6	Network
7	USB	8	Alarm Input / Output
9	VGA Output	10	DC Power

2. Disk Installation

2.1 Preparation

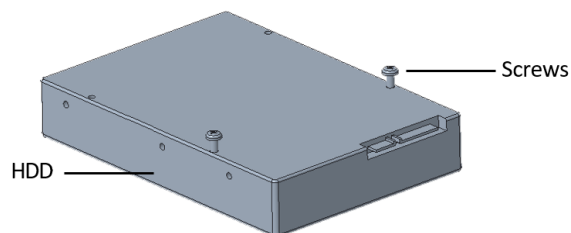
- Prepare a 1# or 2# Philips screwdriver, a pair of antistatic gloves or a wrist strap.
- Disconnect power before installation.

2.2 Install Disks

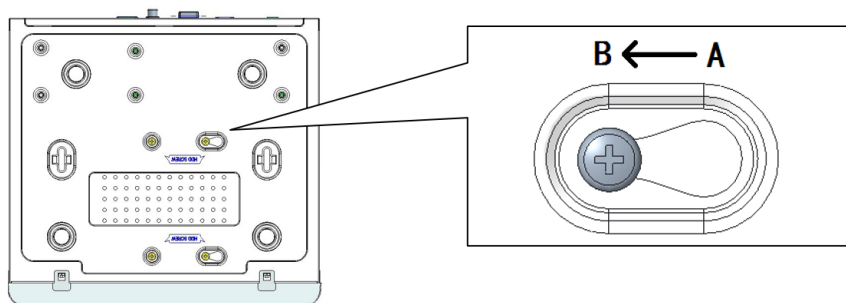
1. Loosen the screws on the rear panel and side panel, and remove the upper cover.



2. Insert the screws into the disk and tighten the screws halfway.



3. Slide the disk into place from A to B, and fix the screws to secure the hard disk.



4. Connect the power cables and data cables.
5. Put the cover back in place and tighten the four screws.


3. Startup and Shutdown

Make sure the cables are connected correctly and the device is grounded properly. Use a power supply that meets requirements.

To start up:

Connect the DVR to power to start the device.

To shut down:

Click  > **Shutdown** on the screen toolbar in the live view page. To start up the DVR, you need to reconnect the power adapter to turn on the device.

Note: Do not disconnect power when the DVR is operating or shutting down.

4. Getting Started

4.1 Startup Wizard

The Wizard page appears after you login. Follow the wizard to complete the most basic setup, or click **Exit**

1. Select **Next**.



2. Set the time parameters, including time zone, date format, time format, and system time. Click **Next**.



3. Configure TCP/IP. Check **Enable DHCP** to automatically obtain an IP address, subnet mask and IP default gateway. You can also enter the information manually. Click **OK**.



4.2 Adding Cameras

Analog Camera

1. Prepare a coaxial cable.
2. Connect BNC connectors to the camera and the DVR. The live view should display automatically upon successful connection.

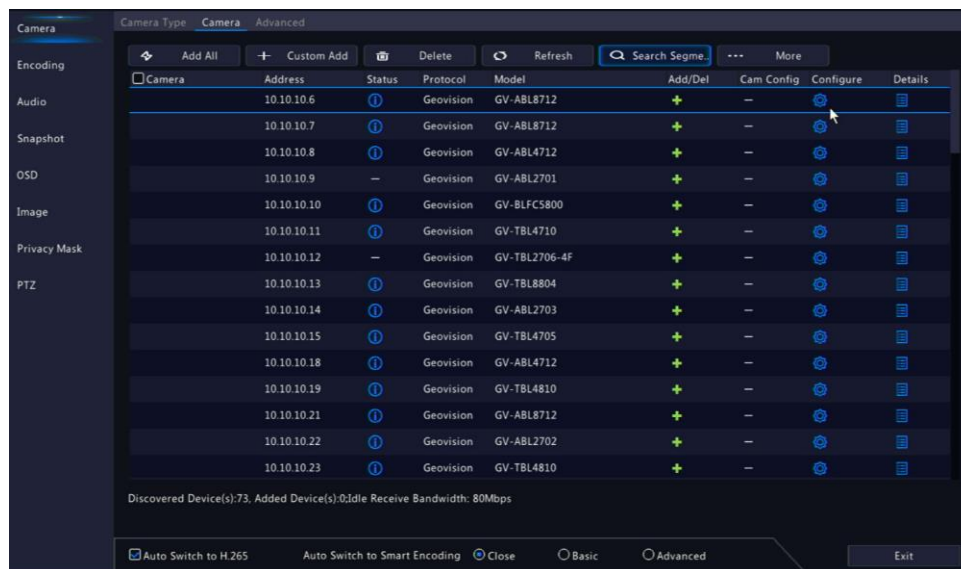
By default, analog camera channels are assigned to **Channels 1 through 16**.

Note: The DVR supports two PTZ control modes, including **Coaxial** or **Serial Port (RS-485)**. Choose the control mode before using PTZ function. See *4.7 PTZ Configuration* in the user's manual.

IP Camera

Make sure the IP camera is connected to the network.

1. Go to **Menu > Camera > Camera > Camera**.



2. Click the **Add** button to add the camera. Click the **Cam Config** button to change its password.
3. Check the status of camera. means the camera gets online successfully. If the status icon is grayed out, place your mouse cursor over the icon to view the cause of error. Click the **Cam Config** button to modify if necessary.

By default, IP camera channels are assigned to **Channels 17 through 24**.

Note: To search a specified network segment, click the **Search Segment** button.

4.3 Changing Camera Type

The DVR can connect two types of cameras: analog and IP cameras. To connect more IP cameras, go to **Menu > Camera > Camera > Camera Type**, and change the camera type to digital. An analog camera cannot be connected when the camera type is set to digital.



Note: Do not disconnect power when the DVR is operating or shutting down.

5. Recording and Playback

To record

The round-the-clock recording schedule is enabled by default for all cameras. To edit the recording schedule, go to **Menu > Storage > Recording Schedule**.


To play back:

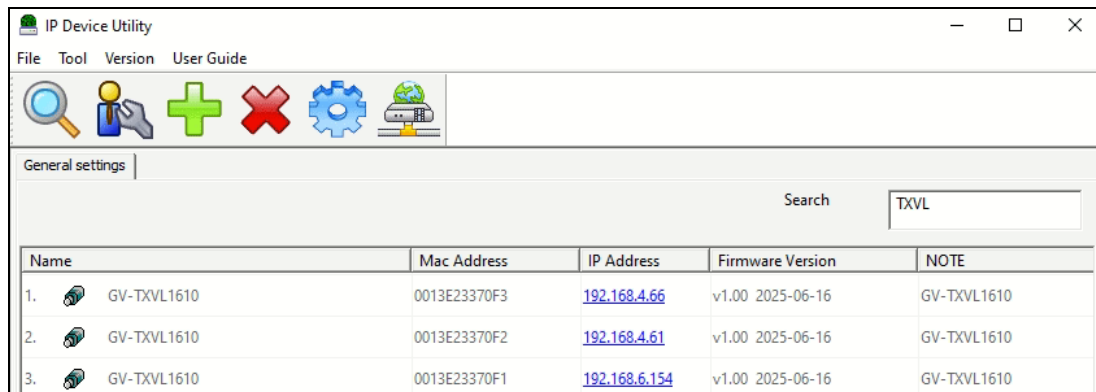
On the preview page, right-click the desired channel and select **Playback** to play the recordings of the current day.

6. Remote Access via Web Client

Use the Web Client to remotely access your DVR at any time via a PC.

By default, the DVR is assigned a fixed IP address: **192.168.0.100**. If DHCP is enabled, the DVR will obtain a dynamic IP address. You can find its IP and access the Web interface using the following method.

1. Make sure the PC used to configure the IP address is under the same LAN as the DVR. Download and install **GV-IP Device Utility** from our [website](#).
2. On the GV-IP Utility window, click the  button to search for IP devices connected in the same LAN. Click the **Name** or **Mac Address** column to sort.
3. Find the DVR with its Mac Address.



4. Click on its IP address and select **Webpage** to open its Web interface.
5. Type the username and password on the login page, and click **Login**.

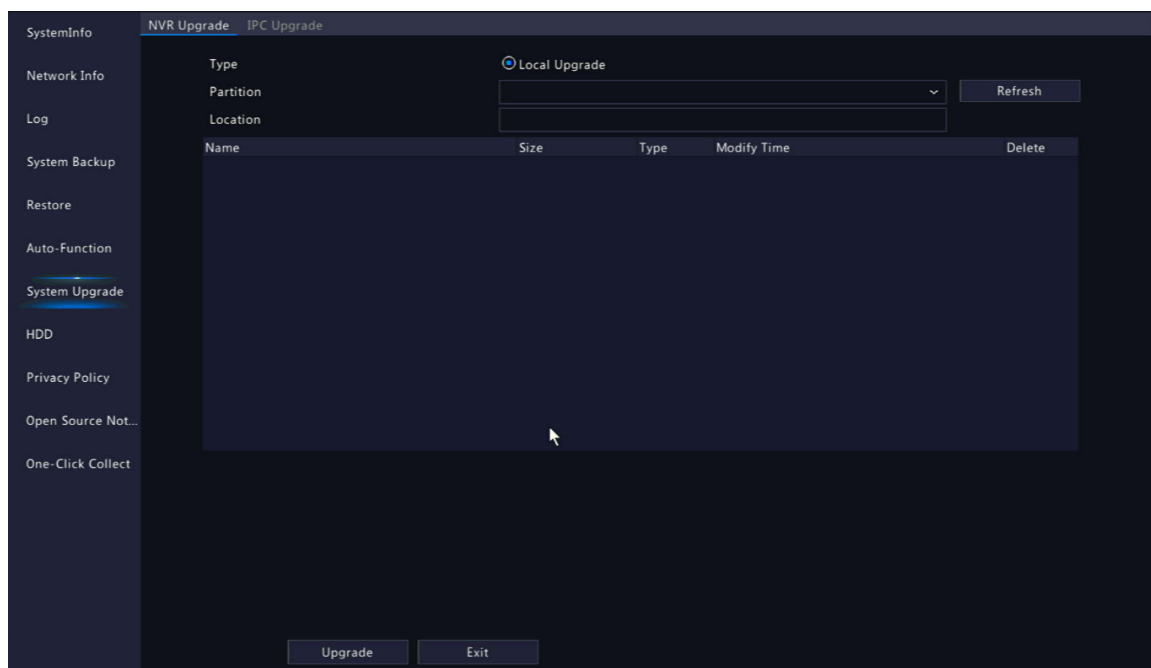
Note: When logging in for the first time, you will be prompted to install a plug-in required for processing media streams. Close all web browsers before starting the installation. Follow the on-screen instructions to complete the process, and then reopen your browser and log in again.

7. Firmware Upgrade

GeoVision periodically releases updated firmware on the company website. To load the new firmware into the DVR, follow the steps below.

7.1 Upgrading Firmware on the DVR

1. Copy the firmware file to your USB drive, and insert the USB drive to the DVR's USB port.
2. Select **Menu > Maintenance > System Upgrade > NVR Upgrade**.




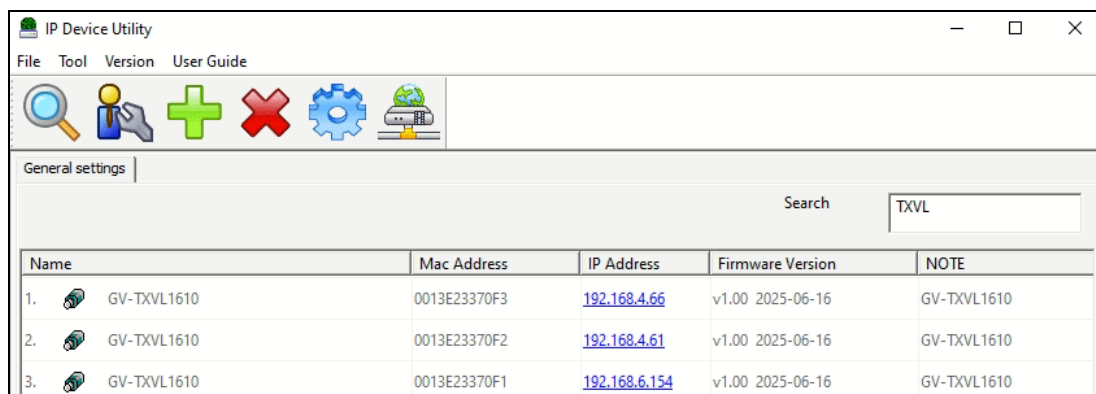
3. Select the upgrade file in the USB storage device.
4. Click **Upgrade** to start.

Note: The system upgrade will last around 5-10 minutes. Do not power off the DVR or remove the USB drive from it during firmware upgrade.

7.2 Upgrading Firmware Using GV-IP Device Utility

Note: The compatible GV-IP Device Utility version is V9.0.5 or later (coming soon).

1. Make sure the PC used to upgrade firmware is under the same LAN as the DVR.
Download and install **GV-IP Device Utility** from our [website](#).
2. On the GV-IP Utility window, click the  button to search for IP devices connected in the same LAN. Click the **Name** or **Mac Address** column to sort.
3. Find the DVR with its Mac Address, and click on its IP address.



4. Click **Configure** and select the **Firmware Upgrade** tab.
5. Click **Browse** to locate the firmware file saved at your local computer.
6. Enter the username and password of the DVR.
7. Click **Upgrade** to process the upgrade.