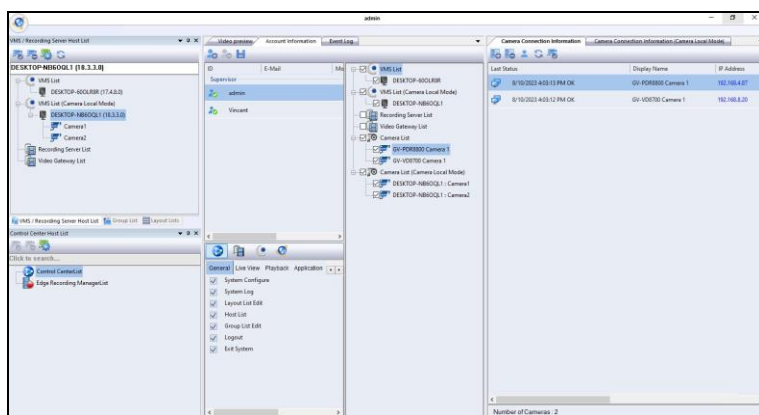


GV-Enterprise

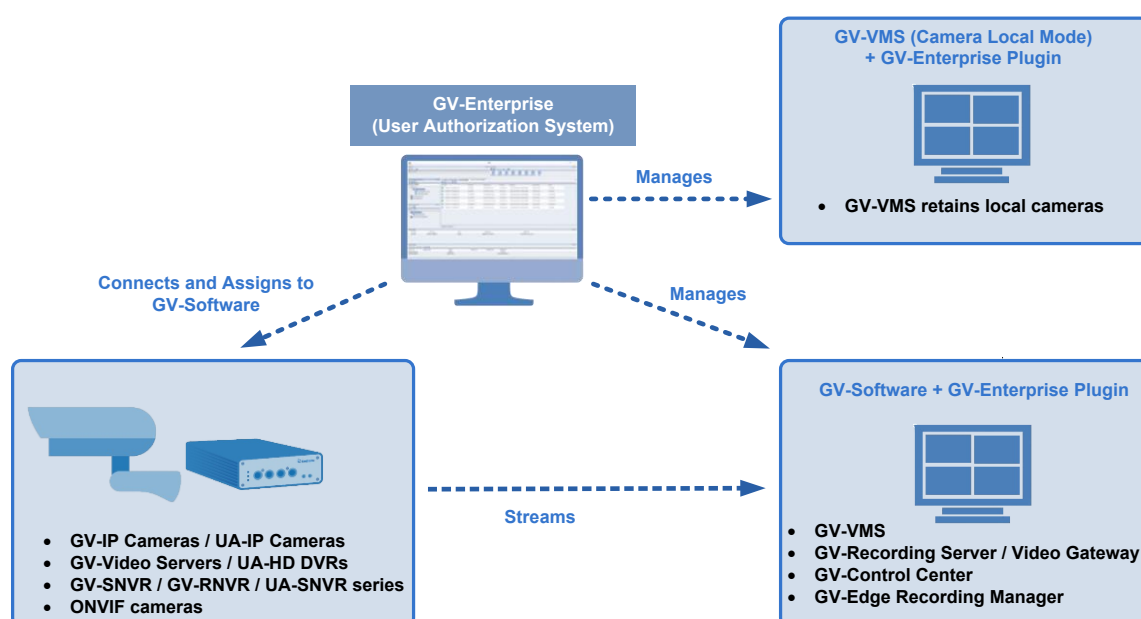


Introduction

GV-Enterprise is a user authorization system designed to centrally manage access permissions and system configurations for GV-VMS, GV-Recording Server/Video Gateway, GV-Control Center, and GV-Edge Recording Manager.

GV-Enterprise seamlessly integrates with GV-Software, ensuring efficient and secure administration of surveillance systems. Upon connection to GV-Enterprise, administrator rights from GV-Software are automatically transferred, enhancing security by restricting local accounts on GV-Software from accessing critical settings. This innovative system empowers users to create accounts with customizable access levels, assign cameras, perform batch upgrades of software versions and camera firmware, modify camera settings, and much more.

The collaboration between GV-Enterprise and the GV-VMS system introduces two streamlined methods. Firstly, GV-Enterprise can be utilized to assign the GV-VMS system cameras, providing centralized control over camera allocation. Alternatively, Camera Local Mode allows users to retain control of GV-VMS cameras when connected to GV-Enterprise. In this mode, GV-Enterprise supervisors can centrally upgrade software across multiple GV-VMS systems and remotely access PCs for maintenance, enhancing operational efficiency and reducing downtime.



Note: Only GV-Control Center and GV-Edge Recording Manager are supported for receiving streams from the GV-SNVR, GV-RNVR, and UA-SNVR series, as well as UA-HD DVRs.

Key Features

- Centralized user account management
- Centralized host management to assign IP cameras to GV-Software
- Remote camera configuration
- Batch camera firmware upgrade
- Manual or scheduled remote software update
- Remote desktop to access the PC of GV-Software for maintenance
- Centralized log management to record user behavior and security data across GV-Software and cameras
- Active Directory integration
- Web viewer for live view and playback

Minimum System Requirements

OS	64-bit	Windows 10 / 11, Server 2019 / 2022
CPU		6th Generation i5-6400, 2.70 GHz
Memory		8 GB
Hard Disk	Installation	1 GB
	OS	32 GB
Graphics Card		Intel internal graphics
LAN		Gigabit Ethernet
Microsoft SQL Server		2014
Software		.Net Framework 3.5

Note:

1. GV-Enterprise can be installed either with Microsoft SQL Server on the same PC, or on a separate PC.
2. It is recommended that GV-Enterprise be installed on a separate PC from the GV-Software connected. If GV-Enterprise and GV-Control Center are installed on the same PC, the system requirements of [GV-Control Center](#) must be met.
3. Users of **Windows Server 2019 and 2022** must install .Net Framework 3.5 and Microsoft SQL Server. For **Windows 10 and 11** users, the two applications are installed alongside GV-Enterprise.

License

License	GV-Control Center V4 USB dongle for GV-Enterprise to be executable
---------	---

Note: GV-Control Center V4 has two types of licensing, USB dongle licensing and software licensing. GV-Enterprise is only compatible with GV-Control Center V4 USB dongle.

Specifications

Host	SW	GV-VMS, GV-Recording Server/Video Gateway, GV-Control Center, GV-Edge Recording Manager
	IP Device	GV-IP Cameras (see <i>Compatible IP Devices</i> below), UA-IP Cameras, GV-Video Servers, GV-SNVR / GV-RNVR / UA-SNVR series, UA-HD DVRs, ONVIF cameras
User Account		Unlimited
SW Remote Configuration		Remote Desktop, Software Upgrade, Auto Layout Adjustment, Enable Double Password for Playback, Recording Settings (Record Type, Video Record Frame Rate, Storage Path, Stream Type, Keep Days and Recycle Threshold) *Auto Layout Adjustment and Enable Double Password for Playback only for GV-VMS *Recording Settings only for GV-VMS and GV-Recording Server
IP Camera Remote Configuration		Firmware Upgrade, Camera Configurations (Stream Settings, Video Resolution, Video Attributes, and image orientation)
Remote Viewer using Browser		Live view and playback from GV-VMS
Language		English

Compatible GeoVision Software and IP devices

GV-Enterprise can connect to and manage the following versions of GV-Software:

- **GV-Control Center:** V4.2.0 or later
- **GV-Edge Recording Manager:** V2.3.0.1 or later
- **GV-Recording Server / Video Gateway:** V2.1.1 or later
- **GV-VMS:** V18.3.2 with Patch, V17.4.7 with Patch or later

GV-Enterprise can connect to and manage the following IP devices:

- **GV-IP Cameras:** GV-ABL / ADR / AVD / BX / EBD / EFD / FER / GBL / GDR / GEB / GEBF / GPH / GVD / MFD / PBL / PDR / PFER / PTZ / QFER / QSD / RBL / REB / RFER / SD / TBL / TDR / TVD series
- **UA-IP Cameras:** UA-B580 / R500 / R580 / R800 series
- **GV-Video Servers**
- **SNVRs:** GV-SNVR / GV-RNVR / UA-SNVR series
- **HD DVRs:** UA-HD DVRs

Note:

1. Only GV-Control Center and GV-Edge Recording Manager are supported for receiving streams from the GV-SNVR, GV-RNVR, and UA-SNVR series, as well as UA-HD DVRs. The supported versions are: **GV-Control Center V4.2.1.12 or V4.3.0 or later / GV-Edge Recording Manager V2.3.0.1 or later.**
2. To support the GV-SNVR, GV-RNVR, and UA-SNVR series, UA-HD DVRs, and the latest GV-IP Cameras, UA-IP Cameras, and GV-Video Servers, you must download and use the following software versions from the [GeoVision Website](#): **GV-Enterprise V1.1.0 or later** and **GV-Enterprise Plugin V1.1.0 or later**. For the complete list of newly supported IP devices, see *Version 1.1.0* in the [GV-Enterprise Version History](#).
3. All specifications are subject to change without notice.