

GV-Center V2 AI & GV-Dispatch Server AI

Quick Start Guide V20





© 2025 GeoVision, Inc. All rights reserved.

Under the copyright laws, this manual may not be copied, in whole or in part, without the written consent of GeoVision.

Every effort has been made to ensure that the information in this manual is accurate. GeoVision, Inc. makes no expressed or implied warranty of any kind and assumes no responsibility for errors or omissions. No liability is assumed for incidental or consequential damages arising from the use of the information or products contained herein. Features and specifications are subject to change without notice.

GeoVision, Inc.
9F, No. 246, Sec. 1, Neihu Rd.,
Neihu District, Taipei, Taiwan
Tel: +886-2-8797-8377
Fax: +886-2-8797-8335
<http://www.geovision.com.tw>

Trademarks used in this manual: *GeoVision*, the *GeoVision* logo and *GV* series products are trademarks of GeoVision, Inc. *Windows* is the registered trademark of Microsoft Corporation.

November 2025

Scan the following QR codes for product warranty and technical support policy:



[Warranty]



[Technical Support Policy]

Contents

Chapter 1 Introduction	1
1.1 Minimum System Requirements	2
1.1.1 GV-Center V2 Requirements	2
1.1.2 GV-Dispatch Server Requirements	2
1.2 Licenses	3
1.2.1 License Overview	3
1.2.2 License Types	3
1.3 Compatible Products and Applications	4
1.3.1 Compatible Products	4
1.3.2 Compatible Applications	4
1.4 Installation.....	5
1.4.1 GV-Center V2 Installation.....	5
1.4.2 GV-Dispatch Server Installation.....	5
Chapter 2 Getting Started	7
2.1 Creating Subscribers	8
2.2 Connecting GV-Center V2 to GV-Dispatch Server.....	10
2.3 Connecting Subscribers to GV-Dispatch Server	12
2.3.1 Connecting GV-VMS / GV-AI Guard to GV-Dispatch Server.....	12
2.3.2 Connecting GV-IP Devices to GV-Dispatch Server	14
2.4 Assigning Licenses to Channels	16
2.5 Connecting to GV-AIS.....	18
2.5.1 Connecting GV-Center V2 to GV-AIS.....	18
2.5.2 Enabling and Configuring PVD Settings	18
Chapter 3 Central Monitoring	19
3.1 Enabling Live View	19
3.2 Recording and Playback.....	21
3.2.1 Recording upon Motion or Events	21
3.2.2 Recording Manually	21
3.2.3 Playing Videos.....	21
3.3 Enabling Two-Way Audio	23
Chapter 4 GV-Center V2 / Dispatch Server Windows	25
4.1 The GV-Center V2 Window.....	25
4.2 The GV-Dispatch Server Window	28

Appendix30

A. Compatible GV-IP Cameras for Events in GV-Center V2 AI 30

Chapter 1 Introduction

Welcome to the *GV-Center V2 AI Quick Start Guide*.

Overview of GV-Center V2 and GV-Dispatch Server

GV-Center V2 is a CMS software for monitoring, receiving, and recording events from GeoVision surveillance systems and IP devices on a single platform. It receives live view, event messages with recordings, and supports two-way audio for remote communication from subscribers.

GV-Dispatch Server is a network management application that distributes numerous GeoVision surveillance systems and IP devices across multiple GV-Center V2 servers. It uses load balancing to distribute subscriber alert events fairly across a GV-Center V2 network and reroutes video events if a server is overloaded or unresponsive.

GV-Center V2 and GV-Dispatch Server Versions

GV-Center V2 is available in **Standard**, **Pro**, and **AI** versions. The Standard version is standalone, while the Pro version can optionally integrate with GV-Dispatch Server. The AI version requires integration with GV-Dispatch Server AI for full functionality. Similarly, **GV-Dispatch Server** is available in two versions: the standard **GV-Dispatch Server**, which can work with GV-Center V2 Pro but is not required, and **GV-Dispatch Server AI**, which must be used with GV-Center V2 AI.

Key differences between GV-Center V2 AI and the Standard / Pro versions include:

- **GV-Center V2 AI can receive AI events** from GV-VMS V18, GV-VMS V20, and GV-AI Guard surveillance systems, GV-Cloud IP Cameras, GV-Cloud Bridge and GV-Cloud Bridge Pro bridge devices, and GV-AI Inference Server (GV-AIS). See *1.3 Compatible GeoVision Products*.
- **GV-Center V2 AI must be integrated with GV-Dispatch Server AI** to manage and distribute surveillance data.

Guide Scope

This guide covers the basic setup and integration of **GV-Center V2 AI** and **GV-Dispatch Server AI** (which will be referred to as **GV-Center V2** and **GV-Dispatch Server** throughout), including system requirements, licensing, installation, subscriber creation, and connection setup between GV-Center V2, GV-Dispatch Server, subscribers, and GV-AIS.

For more details, see [GV-CMS Series User's Manual](#).

1.1 Minimum System Requirements

Before installation, make sure your computer meets the following minimum requirements.

1.1.1 GV-Center V2 Requirements

Requirements (for up to 500 subscribers & 800 channels)		
OS	64-bit	Windows 10 / 11 / Server 2016 / Server 2019 / Server 2022
CPU		Intel Core i7 2600, 3.4 GHz
Memory		8 GB Dual Channels
Hard Disk		500 GB
Graphic Card		PCI-Express, 1024 x 768, 32-bit color
DirectX		9.0c
Hardware		Internal or External GV-USB Dongle
Software		.Net Framework 3.5 SP1 and Chart Control
Note:		
<ol style="list-style-type: none"> It is not recommended to install GV-Center V2 and GV-Control Center on the same PC. Running the two software on the same PC may result in CPU overload error or system failure. To perform GPU decoding, see <i>GPU Decoding Specifications</i> in GV-CMS Series User's Manual. 		

1.1.2 GV-Dispatch Server Requirements

Requirements (for 100 subscribers or more)		
OS	64-bit	Windows 10 / 11 / Server 2016 / Server 2019 / Server 2022
CPU		Intel Core i5 2500, 3.7 GHz
Memory		4 GB Dual Channels
Hard Disk		500 GB
Graphic Card		PCI-Express, 800 x 600 (1280 x 1024 recommended), 32-bit color
DirectX		9.0c
Hardware		Internal or External GV-USB Dongle
Software		.Net Framework 3.5 SP1 and Chart Control
Note: To perform GPU decoding, see <i>GPU Decoding Specifications</i> in GV-CMS Series User's Manual .		

1.2 Licenses

GV-Center V2 AI requires both GV-Center V2 AI and GV-Dispatch Server AI license dongles to operate. These dongles also determine the available AI event support, based on license type and channel count.

The following sections provide an overview of license categories, types, and pricing. For more details, contact our sales representatives.

1.2.1 License Overview

GV-Center V2 AI and GV-Dispatch Server AI licensing dongles must be installed on the computers running GV-Center V2 and GV-Dispatch Server.

License Category	Details
Free License	N/A
Paid License	<ul style="list-style-type: none"> Licensed per channel per month 3 license types available. See <i>1.2.2 License Types with Channel Pricing</i>.
Dongle Type	Internal or external
<p>Note: It is recommended to use the internal GV-USB Dongle to utilize the Hardware Watchdog function, which restarts the PC when Windows becomes unresponsive.</p>	

1.2.2 License Types

License Type	Events Sent to GV-Center V2 / GV-Dispatch Server
AI Event	<ul style="list-style-type: none"> AI and PVD Events from GV-Software / GV-Devices
Special AI	<ul style="list-style-type: none"> AI and PVD Events from GV-Software / GV-Devices Special AI Events (e.g., Personal Protection Equipment Detection and Fall Down Detection from GV-AI Guard)
<p>Note:</p> <ol style="list-style-type: none"> The hierarchy of license types is as follows: Special AI > AI Event. A Special AI license also allows users to receive AI and PVD Events from GV-Software / GV-Devices. In GV-Dispatch Server, right-click Address Book in the Tree View (No. 10, <i>4.2 The GV-Dispatch Server Window</i>) on the main screen and select License Information to view the available and used channels for each license type, as well as the license types assigned to each camera under each subscriber. Alternatively, navigate to Help in the top toolbar and select License Information. 	

1.3 Compatible Products and Applications

1.3.1 Compatible Products

GV-Center V2 AI is compatible with the following products and services for AI event integration and centralized monitoring:

- **GV-VMS:** V17.4.8 or later / V18.3.5 or later / V20.0.1 or later
- **GV-Cloud IP Cameras¹**
- **GV-Cloud Bridge²:** firmware V1.06 or later (for connecting GV and 3rd-party IP cameras that do not have the GV-Center V2 setting page)
- **GV-Cloud Bridge Pro²:** firmware V1.00 or later (for connecting GV and 3rd-party IP cameras that do not have the GV-Center V2 setting page)
- **GV-AI Guard:** V2.1 or later

Services:

- **GV-AI Inference Server (GV-AIS)**

Note:

1. For compatible GV-Cloud IP Cameras, please check the [Webpage](#).
 2. For compatible IP cameras that support AI events on GV-Center V2 AI through a GV-Cloud Bridge / Cloud Bridge Pro connection, refer to this [document](#).
-

1.3.2 Compatible Applications

GV-Center V2 AI supports the following application setups:

1. GV-Center V2 AI + GV-Dispatch Server AI
2. GV-Center V2 AI + GV-Dispatch Server AI + [GV-AI Inference Server \(GV-AIS\)](#)

1.4 Installation

To install GV-Center V2 and GV-Dispatch Server, follow the steps below.

Note: Before installation, make sure your computer meets the minimum requirements in [1.1 Minimum System Requirements](#).

1.4.1 GV-Center V2 Installation

To install GV-Center V2, follow the steps below.

1. Contact our sales representatives to acquire GV-Center V2.
2. Download and install **.Net Framework 3.5 SP1** from <http://www.microsoft.com/download/en/details.aspx?id=25150>
3. Download and install **Microsoft Chart Controls** from <http://www.microsoft.com/en-us/download/details.aspx?id=14422>
4. To complete the installation, it is required to:
 - A. Connect the GV-USB Dongle to the computer.
 - B. Install the driver for the dongle by visiting the GeoVision Website at <http://www.geovision.com.tw/download/product/GV-Center V2>.

On the Website, select **Driver, F/W, Patch** from the drop-down list and click the **Download** icon  of **GV-Series Card Driver / GV-USB Device Driver**.


Type	Title	Ver.	Size	Download
	GV-Series Card Driver / GV-USB Device Driver	V8.5.7.0	5.9MB	



1.4.2 GV-Dispatch Server Installation

To install GV-Dispatch Server, follow the steps below.

1. Contact our sales representatives to acquire GV-Dispatch Server.
2. Download and install **.Net Framework 3.5 SP1** from <http://www.microsoft.com/download/en/details.aspx?id=25150>
3. Download and install **Microsoft Chart Controls** from <http://www.microsoft.com/en-us/download/details.aspx?id=14422>

4. To complete the installation, it is required to:
 - A. Connect the GV-USB Dongle to the computer.
 - B. Install the driver for the dongle by visiting the GeoVision Website at http://www.geovision.com.tw/download/product/GV-Dispatch_Server.

On the GeoVision Website, select **Driver, F/W, Patch** from the drop-down list and click the **Download** icon  of **GV-Series Card Driver / GV-USB Device Driver**.

Show	50	entries	Driver, F/W, Patch	
Type	Title	Ver.	Size	Download
	GV-Series Card Driver / GV-USB Device Driver	V8.5.7.0	5.9MB	

Chapter 2 Getting Started

To get started with GV-Center V2 AI, you must first obtain GV-Center V2 AI and GV-Dispatch Server AI licensing dongles from GeoVision.

Follow the steps in the following sections to establish connections between GV-Center V2, GV-Dispatch Server, and subscribers, assign licenses to channels, and connect GV-Center V2 and GV-Dispatch Server to GV-AIS.

[2.1 Creating Subscribers](#)

[2.2 Connecting GV-Center V2 to GV-Dispatch Server](#)

[2.3 Connecting Subscribers to GV-Dispatch Server](#)

[2.4 Assigning Licenses to Channels](#)

[2.5 Connecting to GV-AIS](#)


2.1 Creating Subscribers

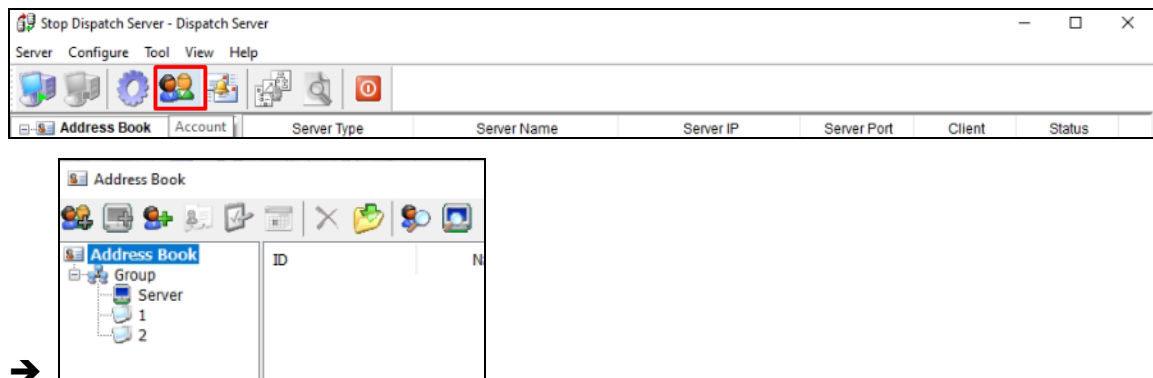
GV-Dispatch Server can serve up to **50 GV-Center V2 servers** and **25,000 subscribers** under GV-Center V2 simultaneously by distributing subscriber requests to the least busy servers.



You must create a subscriber on *GV-Dispatch Server* for each GV-VMS, GV-AI Guard, GV-Cloud IP Camera, GV-Cloud Bridge, or GV-Cloud Bridge Pro that you want to distribute to GV-Center V2.

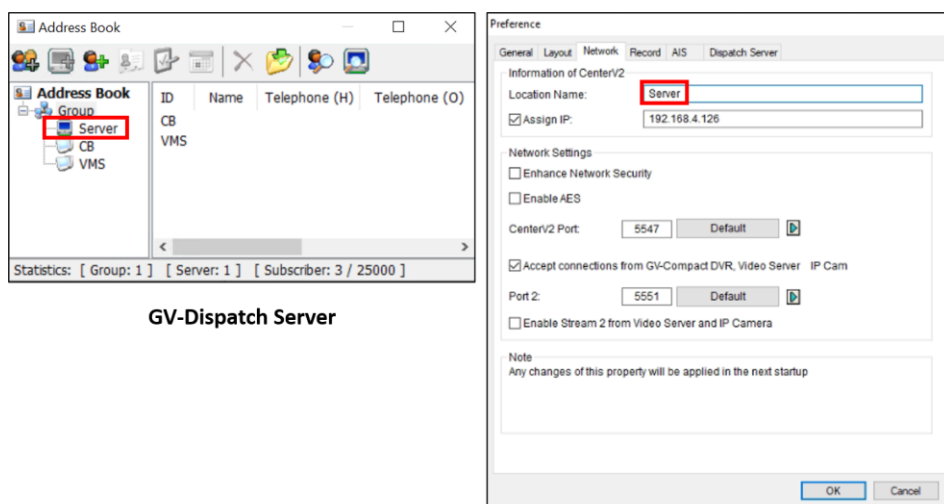
To create a subscriber account, follow the steps below.

In GV-Dispatch Server

1. On the GV-Dispatch Server Window, click the **Account** button . The Address Book window appears.




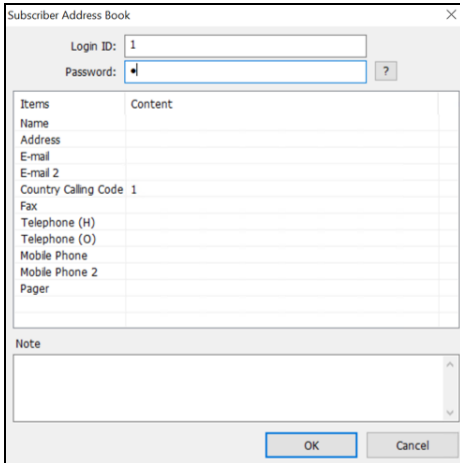
2. Click the **Add a Group** button  to create a group.
3. Click the **Add a Server** button  to create a GV-Center V2 server account. A server icon appears. Rename the server to match the location name of the GV-Center V2 server, configurable in GV-Center V2 > **Preference Settings > System Configuration > Network**.



GV-Dispatch Server

GV-Center V2

4. Click the **Add a Subscriber** button  to create a subscriber account. The Subscriber Address Book dialog box appears.
5. Create an ID and password for the subscriber. You will need to enter these credentials in the subscriber's user interface to enable GV-Dispatch Server to assign it to a GV-Center V2 server.



The dialog box titled "Subscriber Address Book" contains the following fields and controls:

- Login ID:
- Password:
- Items table:

Items	Content
Name	
Address	
E-mail	
E-mail 2	
Country Calling Code	1
Fax	
Telephone (H)	
Telephone (O)	
Mobile Phone	
Mobile Phone 2	
Pager	
- Note:
- Buttons:

6. Click **OK** to finish.


Note:

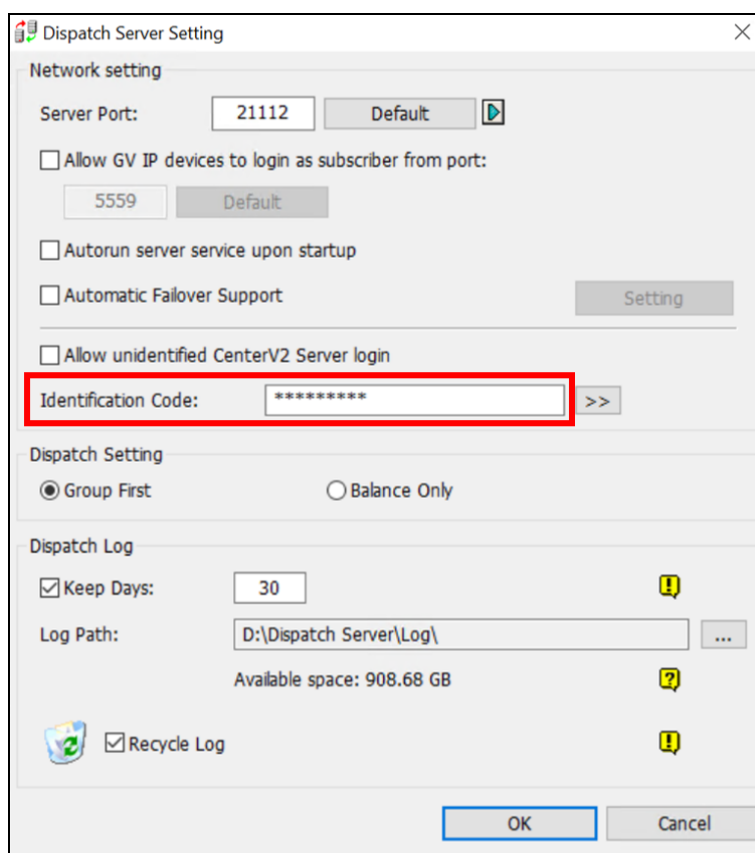
1. You can create sub-groups beneath a group; every sub-group can only include one GV-Center V2 server; every GV-Center V2 server can include up to 500 subscribers.
 2. When one GV-Center V2 server stops running, its own subscribers will be distributed to available GV-Center V2 servers at the same or higher level of the hierarchical file system.
 3. If you do not arrange GV-Center V2 servers and subscribers into groups, the subscribers will be distributed to the GV-Center V2 server with fewer subscribers.
-


2.2 Connecting GV-Center V2 to GV-Dispatch Server

After subscriber accounts are created, you are ready to connect GV-Center V2 to GV-Dispatch Server. Follow the steps below.


In GV-Dispatch Server

1. Click the **Server Setting** button  (No. 3, 4.2 *The GV-Dispatch Server Window*) on the main screen. The GV-Dispatch Server Setting dialog box appears.
2. Type an **Identification Code**. This code will be used for connecting GV-Center V2 to GV-Dispatch Server. Click **OK** to apply the settings.

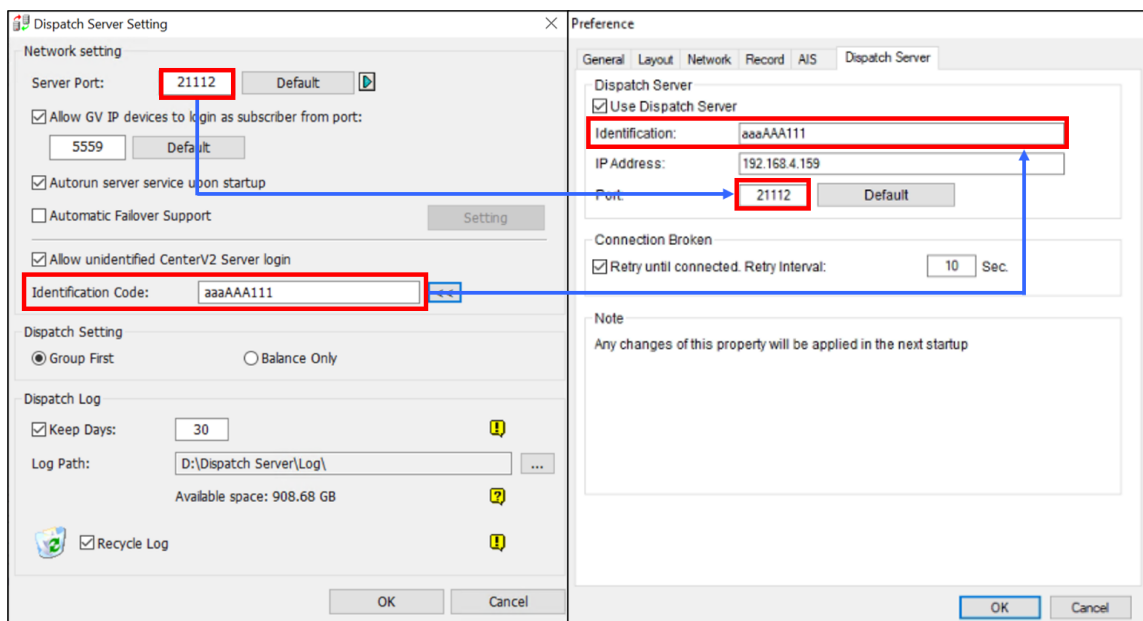


3. Click the **Start Server** button  (No. 1, 4.2 *The GV-Dispatch Server Window*) on the main screen to start the service.

In GV-Center V2

4. Click the **Preference Settings** button  (No. 8, 4.1 *The GV-Center V2 Window*), and select **System Configuration**. The Preference dialog box appears.

- Click the **Dispatch Server** tab, and enable **Use Dispatch Server**. Type the identification code, IP address, and the port of the GV-Dispatch Server.



GV-Dispatch Server

GV-Center V2

- Click **OK**.
- Restart GV-Center V2 to apply the settings. Without this step, GV-Center V2 will not connect to GV-Dispatch Server.

If the connection to GV-Dispatch Server succeeds after restarting GV-Center V2, the Event List will display "**Login Dispatch Server**". Otherwise, it will display "**Failed to Login Dispatch Server**".

	System	System	Start Service	2/24/2025 5:36:21 PM
	System	Login/Logout	Login Dispatch Server.	2/24/2025 5:36:21 PM

2.3 Connecting Subscribers to GV-Dispatch Server

After GV-Center V2 is connected to GV-Dispatch Server, you are ready to establish connections from subscribers to GV-Dispatch Server.

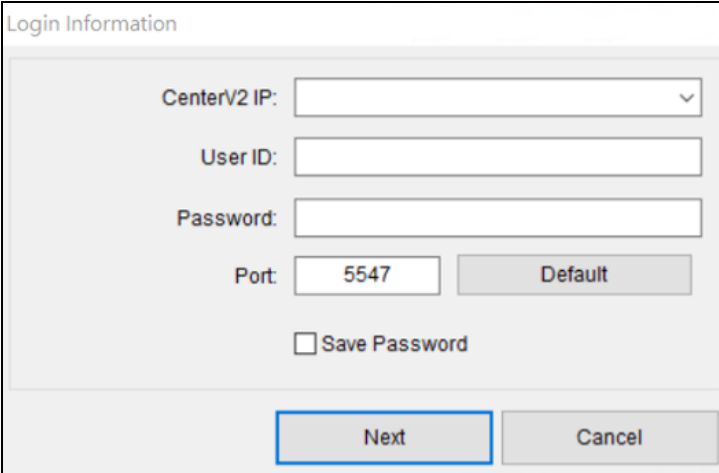
- To connect GV-VMS / GV-AI Guard as a subscriber to GV-Dispatch Server, see 2.3.1 *Connecting GV-VMS / GV-AI Guard to GV-Dispatch Server*.
- To connect a GV-IP device as a subscriber to GV-Dispatch Server, see 2.3.2 *Connecting GV-IP Devices to GV-Dispatch Server*.

2.3.1 Connecting GV-VMS / GV-AI Guard to GV-Dispatch Server

Follow the steps below to configure and connect a GV-VMS / GV-AI Guard surveillance system as a subscriber to GV-Dispatch Server.

In GV-VMS / GV-AI Guard

1. Access the GV-Center V2 login dialog box in a surveillance system.
 - On GV-VMS / GV-AI Guard's main screen: Click **Home** > **Toolbar** > **Network**, and then select **Connect to GV-Center V2**. This dialog box appears.

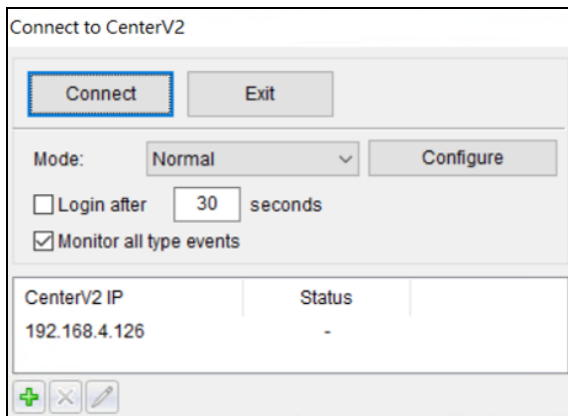


The screenshot shows a 'Login Information' dialog box with the following fields and controls:

- CenterV2 IP:** A dropdown menu.
- User ID:** A text input field.
- Password:** A text input field.
- Port:** A text input field containing '5547' and a 'Default' button.
- Save Password:** A checkbox.
- Next:** A button highlighted with a blue border.
- Cancel:** A button.

2. In the CenterV2 IP field, type the IP address of GV-Dispatch Server.
3. Type a subscriber's ID and password created in GV-Dispatch Server. (See the figure in Step 5 in 2.1 *Creating Subscribers*.)
4. Change the port number from 5547 (GV-Center V2 port) to **21112** (GV-Dispatch Server port).

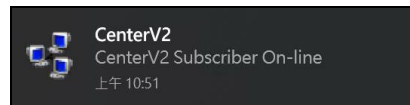
- Click the **Next** button. The Connect to GV-Center V2 dialog box appears.



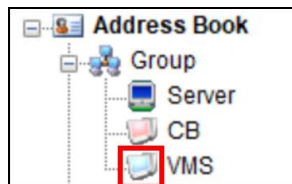
- Click **Connect** to establish a connection to GV-Dispatch Server.

Once connected, the “**Center V2 Subscriber On-line**” message will appear in the notification area of the subscriber’s PC, the icon next to the subscriber in the Tree View in GV-Dispatch Server will change from red to **blue**, and the Event List in GV-Center V2 will display “**Login**” for the subscriber.

Subscriber’s PC:




GV-Dispatch Server:



GV-Center V2:

ID	Type	Message
VMS V18	Login/Logout	Login


Note: If you want to modify the GV-Center V2 login information, on the Connect to CenterV2 dialog box, click a listed GV-Center V2 IP and then select **Modify** .

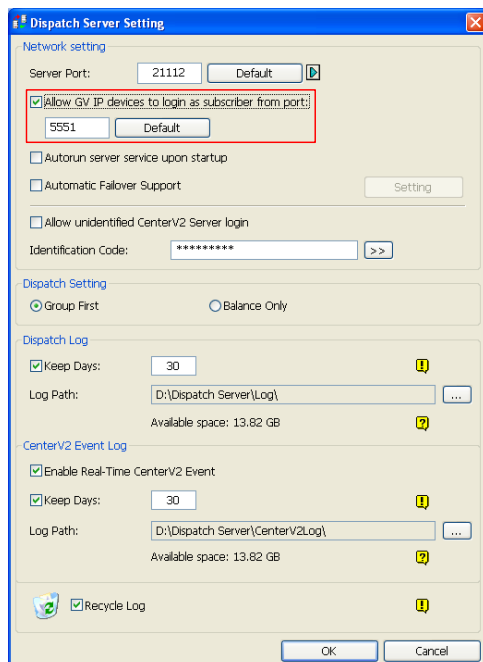
2.3.2 Connecting GV-IP Devices to GV-Dispatch Server

GV-Dispatch Server can distribute GV-IP devices to GV-Center V2 servers based on predefined groups or balance loading of GV-Center V2 servers. Follow the steps below to connect a GV-IP device as a subscriber to GV-Dispatch Server:

Note: If the camera intended for connection does not have the GV-Center V2 setting page, it is required to use GV-Cloud Bridge / Cloud Bridge Pro to connect between the camera and GV-Center V2. For details, see [1.10.2 Connecting to GV-Center V2 / GV-Dispatch Server in GV-Cloud Bridge Installation Guide](#) and [11.3 Connecting to GV-Center V2 / GV-Dispatch Server in GV-Cloud Bridge Pro Installation Guide](#).

In GV-Dispatch Server

1. Make sure to stop the GV-Dispatch Server service first by clicking the **Stop Server** button  (No. 2, [4.2 The GV-Dispatch Server Window](#)) on the main screen.
2. On the main screen, click **Configure** and select **Setting**. The GV-Dispatch Server Setting dialog box appears.
3. Select **Allow GV IP devices to login as subscriber from port** to allow GV-IP devices to log in as subscribers. Change the port when necessary.



On the Web Interface of the GV-IP Device

4. Go to **Config > Service > GV-Center V2**.

Config Home ▶ Service ▶ GV-Center V2


Connection Enable Disable

Address

Command Port

VSS Port

User Name

Password 

State

5. Enable connection to GV-Dispatch Server.
 - A. **Connection:** Select **Enable** to configure and enable the connection.
 - B. **Address:** Type the IP address of GV-Dispatch Server.
 - C. **Command Port:** Match this port to the port value in Step 2 to connect to GV-Dispatch Server. (See the figure in Step 2.)
 - D. **User Name:** Type a user name already established in GV-Dispatch Server to log in.
 - E. **Password:** Type a valid password to log in to GV-Dispatch Server.
 - F. Click **Save** and **Refresh** to set up and refresh the connection.
6. This subscriber will be automatically distributed to an online GV-Center V2 server with the fewest subscribers.

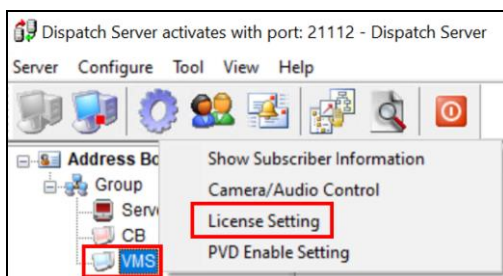
2.4 Assigning Licenses to Channels

Once subscribers are connected to the GV-Dispatch Server, you must assign licenses to channels to receive events. A license can enable AI and PVD events for different subscribers. For details on the license types, see *1.2.2 License Types with Channel Pricing*.

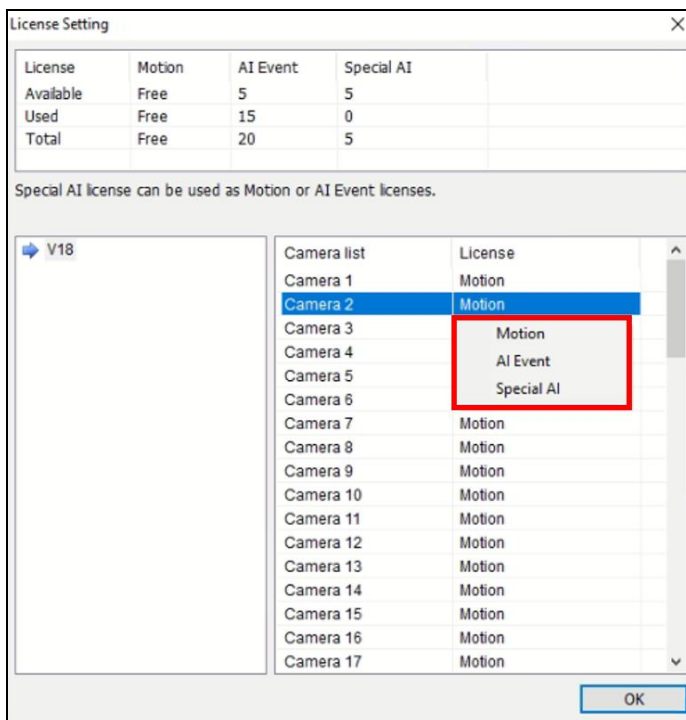
To assign licenses to channels, follow the steps below.

In GV-Dispatch Server

1. To assign license types to cameras under a specific subscriber, right-click the **subscriber** in the **Tree View** (No. 10, *4.2 The GV-Dispatch Server Window*) on the main screen, and select **License Setting**. The License Setting dialog box appears.



2. In the Camera List, click the **License** field of the desired camera, and select a **license type** to assign to the camera. Click **OK** to apply the settings.



Once assigned, GV-Center V2 can receive events from the desired camera according to your selected license.

Note: For GV-VMS V18 / GV-VMS V20 / GV-Cloud IP Camera subscribers, to specify which AI events trigger alarms, follow Steps 1 to 3 in *3.19 Video Analysis by Camera* in [GV-VMS User's Manual V18](#), Steps 1 to 5 in *3.6 Video Analysis by Camera* in [GV-VMS User's Manual V20](#), or see *4.4 Event Configuration* in [GV-Cloud IP Camera User's Manual](#). Then, after triggering the AI events, go to the GV-Center V2 **Event List** to verify that the AI events were successfully sent.

2.5 Connecting to GV-AIS

GV-AIS specializes in people and vehicle analytics, making it a valuable addition to GV-Center V2. By connecting GV-Center V2 and GV-Dispatch Server to GV-AIS, you can enable PVD analytics for GV-VMS subscribers without built-in PVD capabilities, reducing false alarms and improving detection accuracy.

Follow the steps in the following sections to connect GV-Center V2 to GV-AIS, and enable and configure PVD settings.

[2.5.1 Connecting GV-Center V2 to GV-AIS](#)

[2.5.2 Enabling and Configuring PVD Settings](#)

2.5.1 Connecting GV-Center V2 to GV-AIS

To configure **GV-Center V2** to connect to GV-AIS, follow the steps in *2.2 Connecting GV-Center V2 to GV-AIS* in [GV-AI Inference Server User's Manual](#).

2.5.2 Enabling and Configuring PVD Settings

To enable PVD analytics (processed in GV-AIS) for specific cameras under a GV-VMS subscriber, follow the steps in *2.3 Enabling PVD Settings* and *2.4 Configuring Camera's PVD Settings* in [GV-AI Inference Server User's Manual](#).

Chapter 3 Central Monitoring

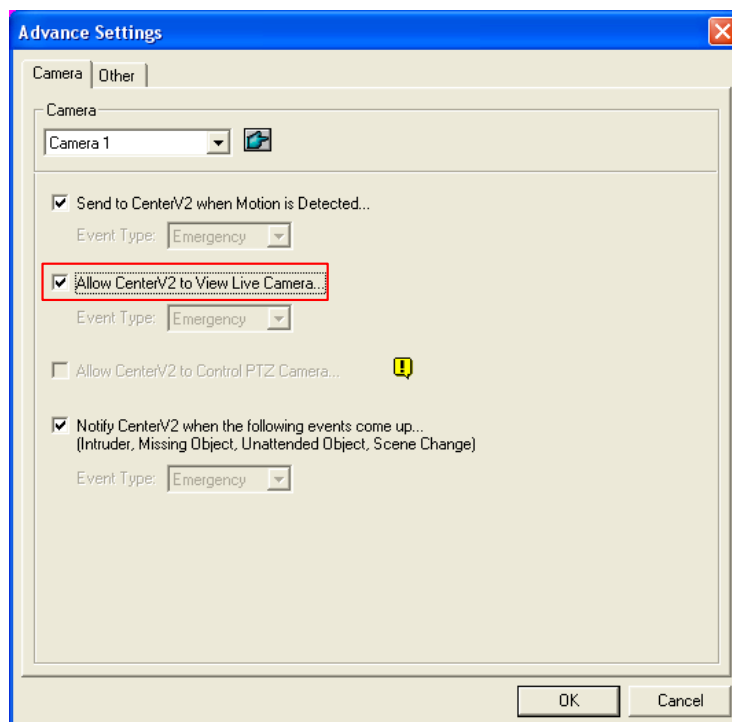
GV-Center V2 provides real-time monitoring capabilities, allowing operators to view live camera feeds, record events, and communicate with subscribers via two-way audio. This chapter explains how to enable live view, manage recordings—both automatic and manual—and use two-way audio for direct communication with surveillance sites.


3.1 Enabling Live View

Live views are automatically displayed on the GV-Center V2 window when events and motion are detected at a subscriber. You can also enable the constant display of live views on GV-Center V2.

In GV-VMS / GV-AI Guard

1. The surveillance system must permit GV-Center V2 to enable live viewing.
 - On GV-VMS / GV-AI Guard: Click **Home** > **Toolbar** > **Network** > **Connect to Center V2** > **Configure** > **Advanced Settings**, and click the **Camera** tab. The Advanced Settings dialog box appears. (See the figure in Step 2.)
2. Select **Allow Center V2 to View Live Camera**.



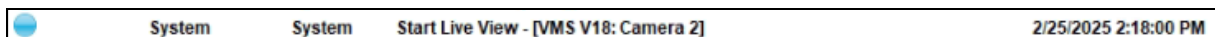
3. To apply the settings to all the cameras, click . Click **OK**.
4. Click **Connect** to link the surveillance system to GV-Center V2.

In GV-Center V2

5. On the GV-Center V2 window, right-click a camera on the Subscriber List and select **Live View**.



When a camera's live view is enabled, you will see the message "Start Live View" in the Event List.




3.2 Recording and Playback

GV-Center V2 provides multiple recording options to capture important events. By default, it records subscriber events and motion, with manual recording available during live monitoring. Recorded videos are categorized by type in the Event List for easy access.

This chapter explains how GV-Center V2 handles automatic and manual recordings, as well as how to play back recorded video clips.



3.2.1 Recording upon Motion or Events


GV-Center V2 records all subscriber events and motion by default. On the Event List, the message [Live Record] appears when a video is recorded.

	ID	Type	Message
	VMS V18	Record	Record file of Camera 2. [Live Record]

3.2.2 Recording Manually

You can start recording manually and instantly when you see any suspicious live images.

1. To manually start recording at any time, the live view must be enabled already. See 3.1 *Enabling Live View*.
2. To start recording, move your cursor to the live view and click the icon  on the channel heading.
3. To stop recording, move your cursor to the live view and click the icon  on the channel heading.
4. When a video is recorded, a message labeled with [Manual] appears on the Event List.

	ID	Type	Message
	VMS V18	Record	Record file of Camera 2. [Manual]

3.2.3 Playing Videos

You can play videos saved at GV-Center V2 by clicking the events with video clips from the Event List

	ID	Type	Message
	VMS V18	Record	Record file of Camera 2. [Live Record]

For details, see *1.8 Recording* and *1.9 Playback* in [GV-CMS Series User's Manual](#).

Note:

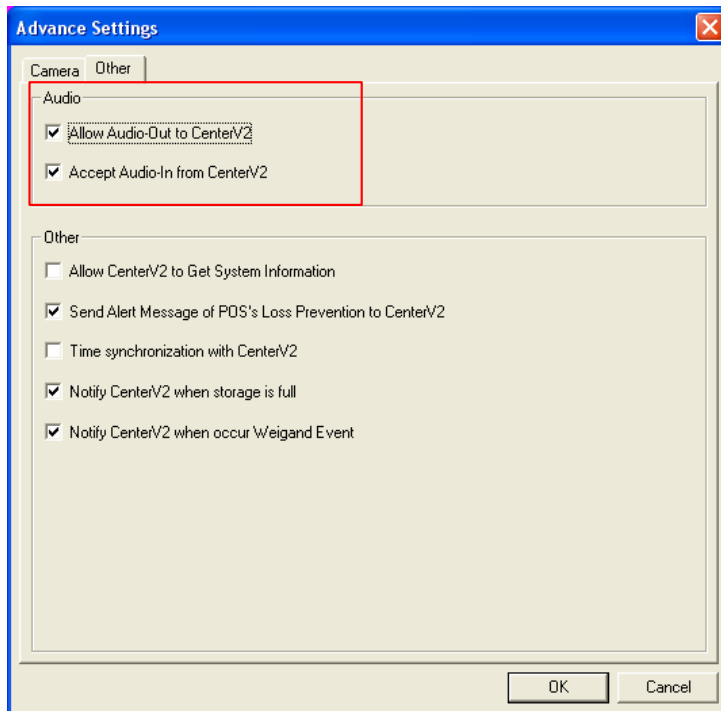
1. The default path for recorded files is: \\Center V2\Data\subscriber\Live
 2. The default path for manually initiated recordings is : \\Center V2\Data\subscriber\Manual
-

3.3 Enabling Two-Way Audio

The GV-Center V2 operator can perform two-way audio with subscribers.

In GV-VMS / GV-AI Guard

1. The surveillance system must grant GV-Center V2 the permission to enable two-way communications.
 - On GV-VMS / GV-AI Guard: Click **Home** > **Toolbar** > **Network** > **Connect to Center V2** > **Configure** > **Advanced Settings**, and click the **Other** tab. The Advanced Settings dialog box appears.
2. Under the Audio section, select **Allow Audio-Out to Center V2** and **Allow Audio-In from the Center V2**.



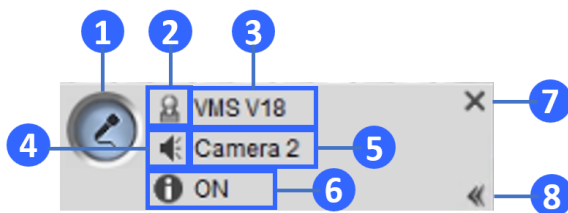
3. Click **OK** to apply the settings.
4. Click **Connect** to link the surveillance system to GV-Center V2.

In GV-Center V2

5. Move your cursor to the live view. The **Microphone**  and **Audio** icons  appear on the bottom left corner.



6. To speak to a subscriber, click the **Microphone** icon  to turn it on. The control panel appears.

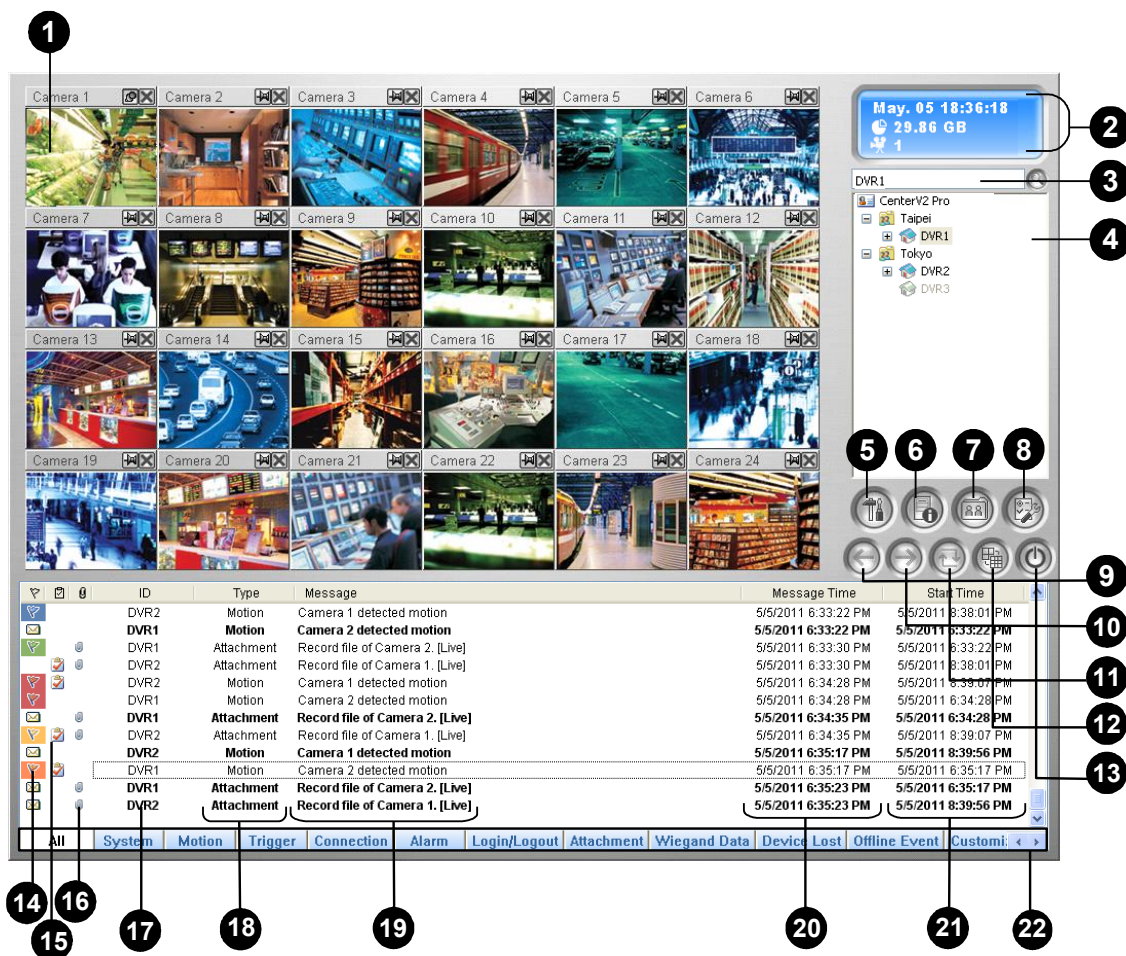


Function	Description
1. On/Off Button	5. IP Device Name
2. Click to change subscriber	6. Microphone Status
3. Subscriber Name	7. Hide this window and stop microphone
4. Click to change audio	8. Reduce the window to an icon

Chapter 4 GV-Center V2 / Dispatch Server Windows

The Main Windows in GV-Center V2 and Dispatch Server offer centralized access to key features and status information in the two software. This chapter provides an overview of their layouts and functions.

4.1 The GV-Center V2 Window



The controls on the GV-Center V2 window:

No.	Name	Description
1	Monitoring Window	Displays live video.
2	Status Panel	Indicates the date, time, remaining disk space, and the total number of online channels versus available channels.

No.	Name	Description
3	Find a Subscriber	Type the desired ID in the Current Subscriber field and click this button to search.
4	Subscriber List	<p>Displays subscribers' ID names and online status.</p> <p>Right-click any subscriber to access the Subscriber Address Book and PVD Enable Setting panels. Additional functions include Send E-Mail, E-Map, Audio, Microphone, Camera Monitor, Dispatch to Another CenterV2, and Event Log.</p> <p>Right-click any camera under a GV-VMS subscriber to access the PVD Setting panel, as well as the Copy Camera ID function, which allows the ID to be pasted into GV-AIS VA Logs. See 3.3 <i>Event Query</i> in GV-AI Inference Server User's Manual for details.</p> <p>Blue Icon: Indicates the subscriber is online. Gray Icon: Indicates the subscriber is offline. Alarm Icon: Indicates either motion has been detected or the I/O has been triggered at the subscriber's site.</p>
5	Tools	Accesses Event Log, Event List, Event Chart, QView, audio and microphone control, SMS Server configuration, and short message notification.
6	Host Information	Displays the connection status of subscribers.
7	Accounts	Adds, deletes or modifies subscriber accounts.
8	Preference Settings	Brings up these options: System Configure, Event Log Settings, Notification, Password Setup, E-mail Setup, Customize Alarm Report, SMS Setup, I/O Device, Automatic Failover Support and Version Information.
9	Previous Page	Displays the previous page of camera views.
10	Next Page	Displays the next page of camera views.
11	Refresh Channel	Refreshes the connection status.
12	Split Mode	<p>In the 1024 x 768 resolution, select 6, 15, or 24 screen divisions for a single monitor; 9, 25, or 36 screen divisions for dual monitors.</p> <p>In the 1280 x 1024 resolution, select 6, 12, or 24 screen divisions for a single monitor; 9, 20, or 42 screen divisions for dual monitors.</p> <p>In the 1600 x 1200 resolution, select 6, 12, or 24 screen divisions for a single monitor; 9, 16, or 36 screen divisions for dual monitors.</p>

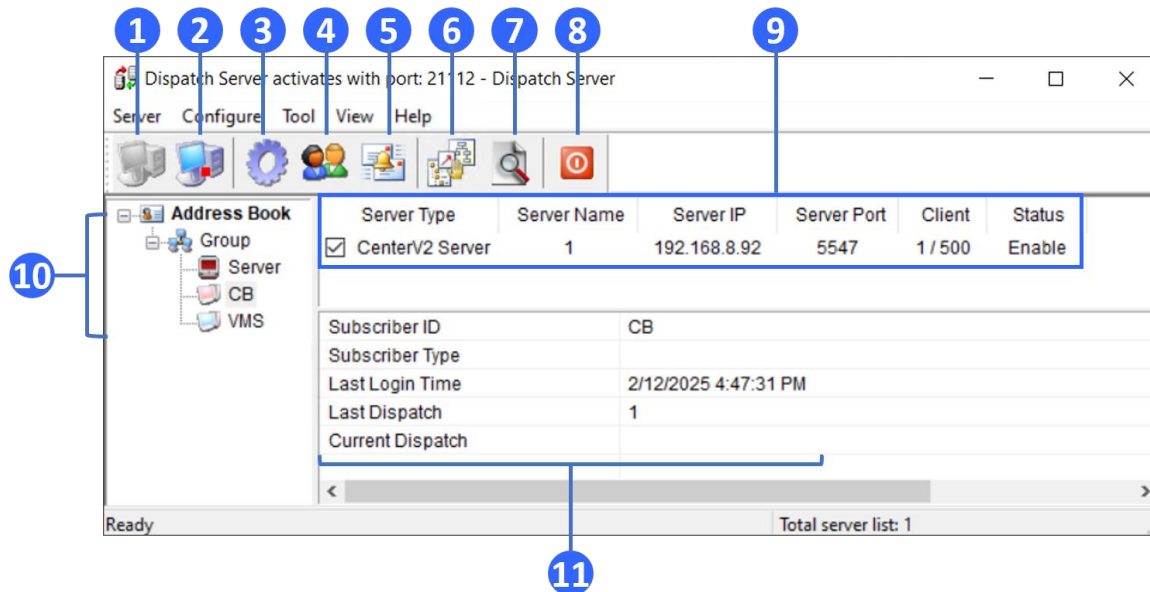
No.	Name	Description
		<p>In the 1680 x 1050, 1920 x 1200 and 1440 x 900 resolutions, select 6, 15, or 28 screen divisions for a single monitor; 9, 20, or 42 screen divisions for dual monitors.</p> <p>In the 1920 x 1200 resolution, select 6, 15, or 28 screen divisions for a single monitor; 9, 20, or 42 screen divisions for dual monitors.</p> <p>In the 1280 x 800 resolution, select 6, 12, 24 screen divisions for a single monitor; 9, 16, 30 screen divisions for dual monitors.</p> <p>For resolution, see <i>1.16.2 Layout Settings</i> in GV-CMS Series User's Manual.</p>
13	Exit	Closes or minimizes the GV-Center V2 window.
14	Flag	Flags an event for later reference.
15	Clipboard	Displays the Alarm Report dialog box.
16	Video Clip	Indicates an event with a recording attachment from a subscriber or a live recording at GV-Center V2. To open the recording file, double-click the event.
17	ID	Indicates a subscriber's ID.
18	Event Type	Indicates the event type: Alarm, Record, Connection, Login/Logout, Motion, System, Trigger and Wiegand Data.
19	Message	Indicates associated information for each event type.
20	Message Time	Indicates when GV-Center V2 receives an event.
21	Start Time	Indicates when an event happens at the subscriber's site.
22	Event Categories	<p>Sorts events by types, including All, System, Motion, Trigger, Connection, Alarm, Login/Logout, Record, Wiegand Data, Device Lost, Offline Event, PVD, AI, and Customized Event. The function is only available for the Professional version. For details, see <i>1.14.2 Using the Event Tabs</i> in GV-CMS Series User's Manual.</p>

Note:

1. The **PVD** and **AI** categories receive PVD (People and Vehicle Motion Detection) and AI analytics events.
2. The **Record** category includes recording attachments from subscribers and live recordings at GV-Center V2.



For details, see *1.4 The GV-Center V2 Window* in [GV-CMS Series User's Manual](#).

4.2 The GV-Dispatch Server Window



The controls on the GV-Dispatch Server window:

No.	Name	Description
1	Start Server	Starts GV-Dispatch Server.
2	Stop Server	Stops GV-Dispatch Server.
3	Server Setting	Configures GV-Dispatch Server.
4	Account	Adds, edits, and deletes the accounts of GV-Center V2 servers and subscribers.
5	Subscriber Notification Setting	Sets the alert conditions and methods
6	Manual Dispatch	Enables manual distribution of subscribers. Click this button and drag a subscriber to the desired GV-Center V2 server.
7	Stop/Start Query GV-Center V2 Event	Specifies an event query.
8	Exit	Closes the GV-Dispatch Server window.
9	Center V2 Status	This part lists the connected GV-Center V2 servers and their status. Subscribers can be distributed to the ticked GV-Center V2 servers. Unchecking will disable the distribution service.
10	Tree View	The list displays all created group folders, servers, and subscribers.

No.	Name	Description
		<p>Right-click Address Book and select License Information to view the available and used channels for each license type, as well as the license types assigned to each camera under each subscriber.</p> <p>Right-click any subscriber to call up the Subscriber Address Book, License Setting, and PVD Enable Setting panels. However, the subscriber must be online to access the Camera/Audio Control panel. For details, see <i>2.4 Assigning Licenses to Channels</i> and <i>2.5 Connecting to GV-AIS</i> in this guide, and <i>1.11.2 Camera/Audio Control Window</i> in GV-CMS Series User's Manual.</p> <p>Blue Icon : The server / subscriber is online.</p> <p>Red Icon : The server / subscriber is offline.</p>
11	Subscriber Status	<p>Displays subscriber information such as subscriber ID, type, last login time, last dispatch, and current dispatch. Click the desired subscriber from the tree view to display this information.</p>

Appendix

A. Compatible GV-IP Cameras for Events in GV-Center V2 AI

For GV-IP Cameras connected via GV-Cloud Bridge / Cloud Bridge Pro, see *AI Search: GV-Cloud IP Cameras or GV-IP Cameras via GV-Cloud Bridge / Cloud Bridge Pro* in [Compatible Devices and Software for GV-Cloud VMS AI Search](#).

For GV-IP Cameras connected via GV-VMS V20.0.1 or later, see *Camera's AI Events Supported by GV-VMS* in [Camera Features Supported by GV-VMS V20](#).

For GV-IP Cameras connected via GV-VMS V18.3.5 or later, see [Camera's AI Events Supported by GV-VMS V18](#).