



How to upgrade GV-LPR2812-DL firmware

Article ID: GV4-25-05-02

1. Introduction

To upgrade the GV-LPR2812-DL's firmware, follow the three steps outlined below. Without completing the three procedures, the GV-LPR2812-DL may not function properly after firmware upgrade.

Step 1: Upgrade the Factory firmware

with the file "A08-GV-LPR2812-DL_VX.XX_XXXX_XX_XX.bin".

For example, A08-GV-LPR2812-DL_V1.01_2025_03_13.bin

Step 2: Upgrade the Web firmware

with the file "GV-LPR2812-DL_VXXX_XXXXXXXXX.bin".

For example, GV-LPR2812-DL_V101_20250423.bin

Step 3: Upgrade the Engine firmware

with the file "GV-LPR2812-DL_VXXX_XXXXXXXXX_model_XXX.bin".

For example, GV-LPR2812-DL_V101_20250424_model_CAL.bin

For Step 3, different country engines are contained in a folder. To find and upgrade the appropriate Engine firmware, refer to the nation abbreviation in the table below.

1	CAL	California (USA)	13	MYS	Malaysia
2	COL	Colombia	14	NLD	Netherlands
3	CZE	Czech Republic	15	ROU	Romania
4	DEU	Germany	16	SVK	Slovakia
5	EUE	European Union	17	TWN	Taiwan
6	FRA	France	18	UKR	Ukraine
7	GBR	United Kingdom	19	VNM	Vietnam
8	GOA	Georgia (USA)	20	BRA	Brazil
9	HUN	Hungary	21	MMR	Myanmar
10	ISR	Israel	22	DEB	Germany Border
11	ITA	Italy	23	LVA	Latvia
12	LTU	Lithuania	24	PHL	Filipino




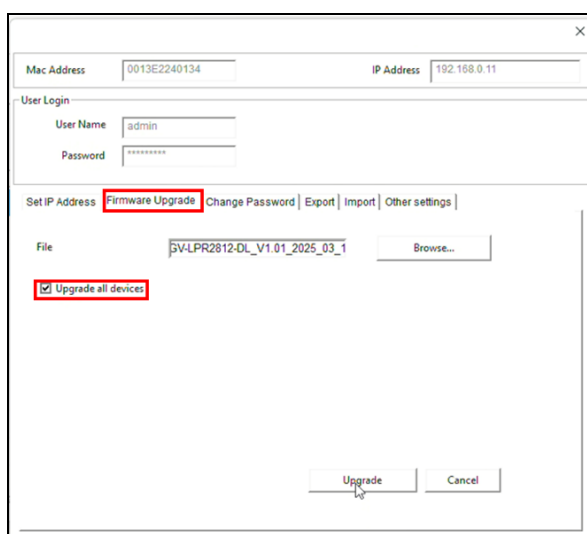
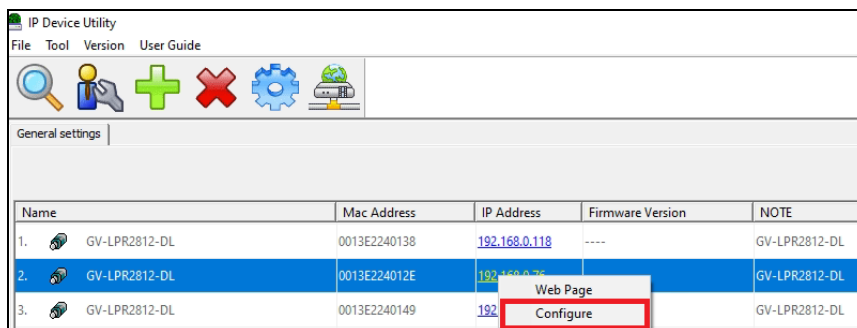
2. Instructions

To upgrade the camera firmware, you can use *GV-IP Device Utility* or through its *Web interface*.

2.1 Using GV-IP Device Utility

To upgrade the camera firmware, use **GV-IP Device Utility** downloaded from the [GeoVision website](#). There are three types of firmware required to upgrade GV-LPR2812-DL: **Factory firmware**, **Web firmware** and **Engine firmware**.

1. Ensure the PC used to upgrade the firmware is under the same LAN as the camera.
2. On the GV-IP Utility window, click the  button to search for IP devices in the same LAN. Click the **Name** or **Mac Address** column to sort.
3. Find the camera with its Mac Address, click on its IP address, and select **Configure**. You are prompted to enter the camera's login ID and password. On the setup dialog box, select the **Firmware Upgrade** tab. If you have multiple cameras installed, select **Upgrade all devices** to update the firmware for all detected cameras in the list.





4. To upgrade the camera firmware, complete the three procedures outlined below.

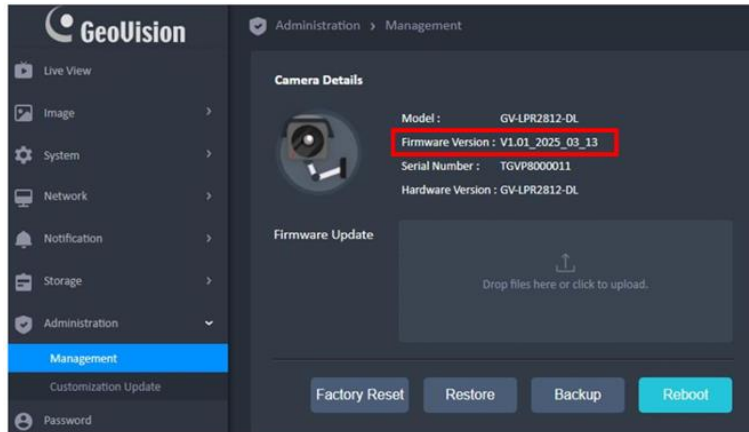
- Every firmware upgrade takes about 2 mins and restarts the camera.
 - **Re-search** for cameras with the Utility after each firmware upgrade.
- A. Click **Browse** to locate the Factory firmware file
“A08-GV-LPR2812-DL_VX.XX_XXXX_XX_XX.bin” saved in the PC, and click **Upgrade**. When the Factory firmware upgrade is complete, re-search for cameras, and return to the upgrade setup dialog box.
- B. Click **Browse** to locate the Web firmware file
“GV-LPR2812-DL_VXXX_XXXXXXXXX.bin” saved in the PC, and click **Upgrade**.
When the Web firmware upgrade is complete, re-search for cameras, and return to the upgrade setup dialog box.
- C. Click **Browse** to locate the Engine firmware file
“GV-LPR2812-DL_VXXX_XXXXXXXXX_model_XXX.bin” saved in the PC, and click **Upgrade**.

When the three firmware upgrades are complete, your camera is upgraded to the most recent versions.

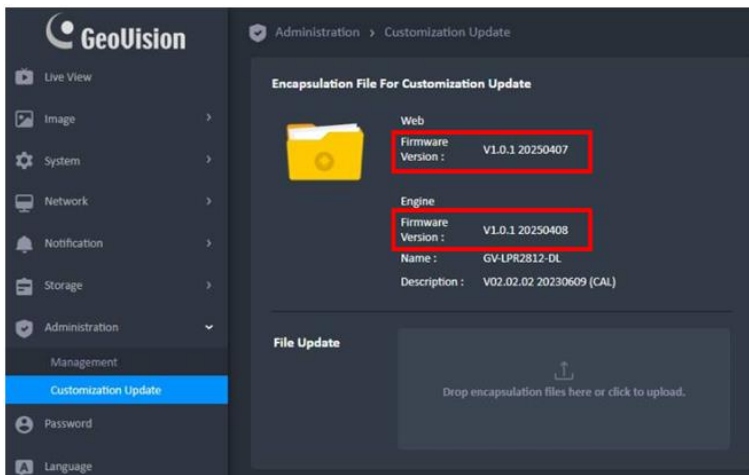


5. To verify the camera's current firmware versions, you can go to the camera's Web interface.

- To check the Factory firmware version, go to **Administration > Management**, and find the Firmware version.



- To check the Web or Engine firmware versions, go to **Administration > Customization Update**, and find the Web and Engine firmware versions.



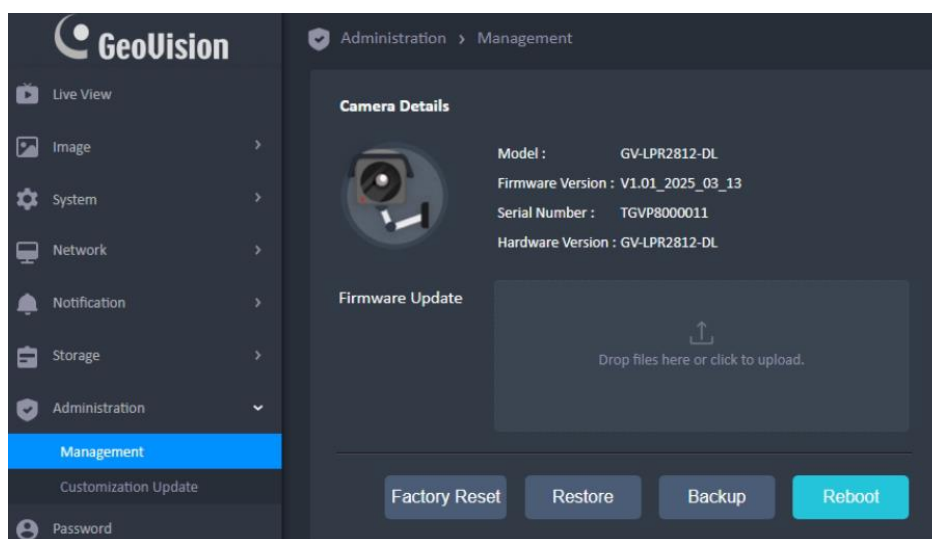


2.2 Through the Web Interface

There are three types of firmware required to upgrade GV-LPR2812-DL: **Factory firmware**, **Web firmware** and **Engine firmware**.

To upgrade the Factory firmware:

1. Go to **Administration > Management**.
2. To upgrade the firmware, drop or locate the Factory firmware file
“A08-GV-LPR2812-DL_VX.XX_XXXX_XX_XX.bin”.

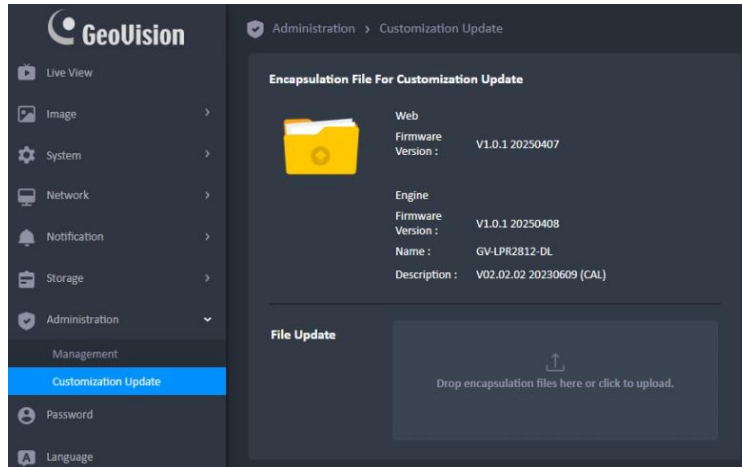


3. When the Factory firmware upgrade is complete, relog in the camera to proceed with the Web firmware upgrade.



To upgrade the Web firmware:

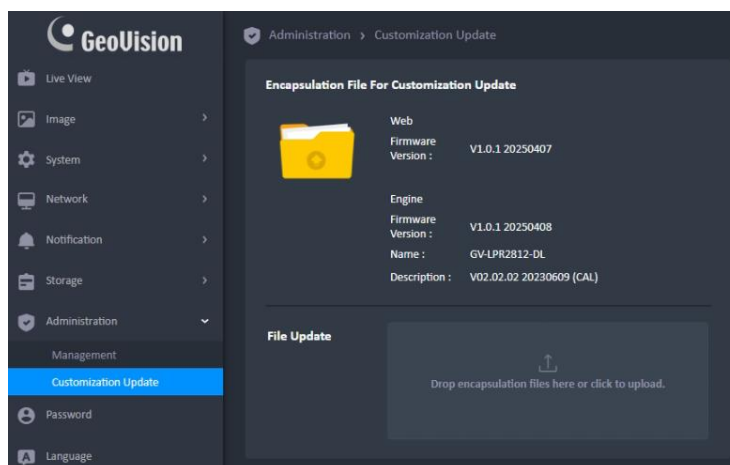
4. Go to **Administration > Customization Update**.
5. Drop or locate the Web firmware file “GV-LPR2812-DL_VXXX_XXXXXXXXX.bin” to the page.



6. When the Web firmware upgrade is complete, relog in the camera to proceed with the Engine firmware upgrade.

To upgrade the Engine firmware:

7. Go to **Administration > Customization Update**.
8. Drop or locate the Engine firmware file “GV-LPR2812-DL_VXXX_XXXXXXXXX_model_XXX.bin” to the page



9. When the Engine firmware upgrade is complete, your camera is upgraded to the most recent versions.