



How to Upgrade GV-IS1320 Firmware

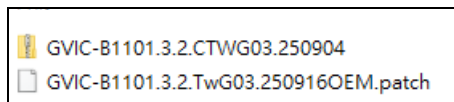
Article ID: GV4-26-05-11

1. Introduction

GeoVision updates the GV-IS1320 firmware and publishes the latest version on the official website. Firmware can be loaded into the controller using its **Web interface** or **GV-IP Device Utility**.

After unzipping the downloaded firmware file, you will find the two sub-files, as illustrated below.

- A. **zip** file for the camera firmware
- A **.patch** file for the controller firmware



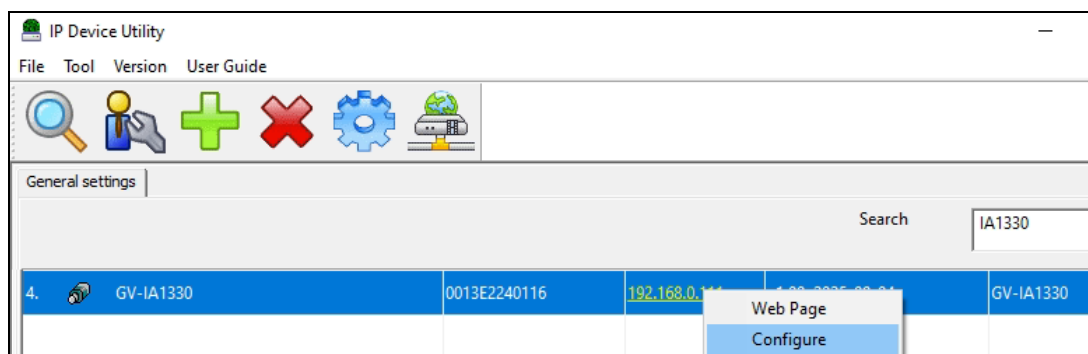
2. Instructions

To upgrade the camera firmware, you can use *GV-IP Device Utility* or through its *Web interface*.

2.1 Using GV-IP Device Utility

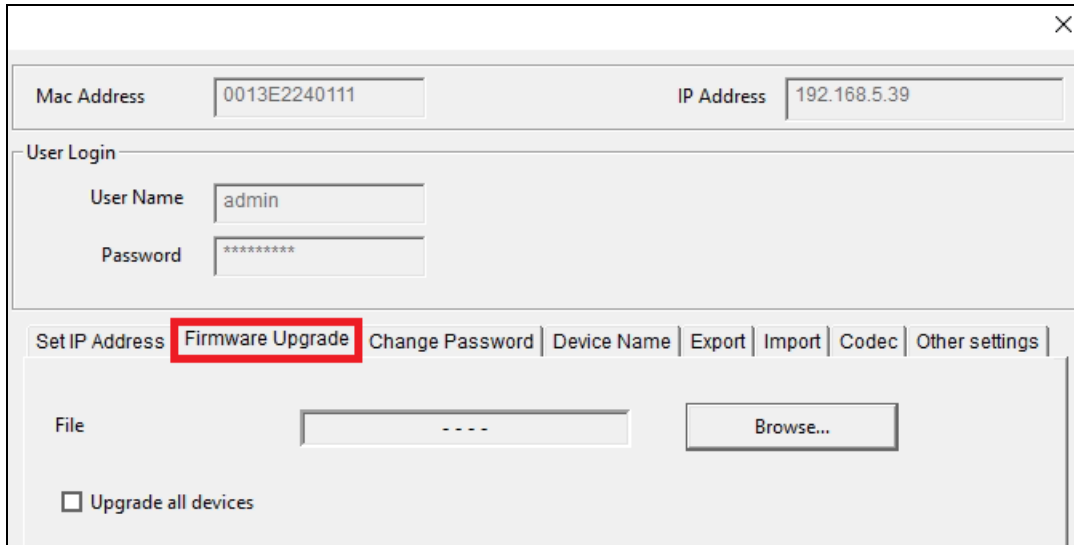
The utility can be downloaded from our [website](#).

1. Open the utility. It will automatically detect the devices on the same LAN.
2. Select the GV-IS1320 on the list, and select **Configure**.





3. Select **Firmware Upgrade**.



The screenshot shows a web interface window with a close button (X) in the top right corner. At the top, there are two input fields: "Mac Address" with the value "0013E2240111" and "IP Address" with the value "192.168.5.39". Below these is a "User Login" section with "User Name" (admin) and "Password" (masked with asterisks). A horizontal menu bar contains several options: "Set IP Address", "Firmware Upgrade" (highlighted with a red box), "Change Password", "Device Name", "Export", "Import", "Codec", and "Other settings". Below the menu bar, there is a "File" input field with a "Browse..." button next to it. At the bottom left, there is a checkbox labeled "Upgrade all devices".

4. To upgrade the camera firmware, click **Browse** to locate the .zip file. Click **Upgrade**.
5. After the upgrade is complete, the device will automatically restart. Go to the **Firmware Upgrade** dialog box again.
6. To upgrade the controller firmware, click **Browse** and select the .patch file. Click **Upgrade**.

2.2 Through the Web Interface

1. On the controller's Web interface, select **System > Maintenance**.
2. To upgrade the camera firmware, click **Browse** and select the .zip file.
3. After upgrade is complete, the device will automatically restart. Re-log in the controller's Web interface to continue.
4. To upgrade the controller's firmware, go to the Maintenance page, click **Browser** and select the .patch file.



2.3 Verify the firmware upgrade

Go the controller's Web interface, and select **Common > Basic Info**. You can find the current camera firmware version and controller firmware version, as shown below:

Common

Basic Info

Local Parameters

Time

OSD

User

Personalization

Network

Video & Audio

Image

Storage

Security

System

Basic Info

About

Basic Info

ModelGV-IA1330

IPv4 Network Info192.168.5.39/255.255.248.0/192.168.0.1

MAC Address00:13:e2:24:01:11

Version Info

Camera FW VersionV1.00_2025_03_07

Controller FW Version1.0.0.0.20250602

Hardware VersionA

Boot VersionV2.3

Serial No.210235C7C73241000385

Status

System Time2025/10/7 14:43:34

Operation Time0 Day(s) 0 Hour(s) 30 Minute(s)

Refresh